

# Integra Viglen Getting Started Guide

## Contents

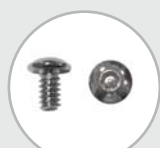
1 Base Unit

2 Monitor

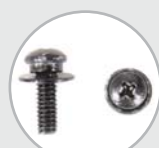


## Included fittings

Your Viglen Integra has been shipped with a multi-purpose screw pack. You may not need to use all the screws in the pack to complete this assembly. You will require the screws shown below:



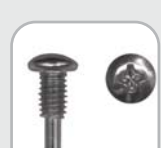
Screw A  
( x 1 )



Screw B  
( x 2 )



Screw C  
( x 3 )



Screw J  
(pre-fitted to  
monitor stand)  
( x 1 )

## Included cables

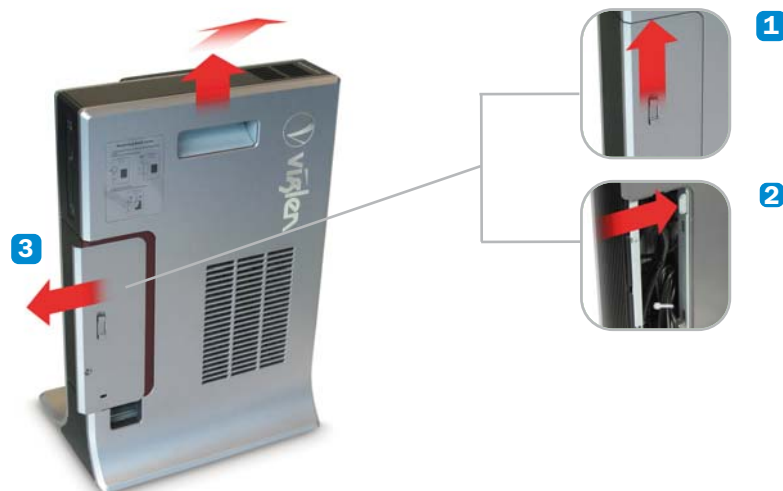
Depending on your configuration you will receive one split power cable for the base unit and monitor and one or more of the following cables: video, audio.

## Tools required

Cross-head (philips-head) screwdriver  
Optional security screwdriver (order EMSECDRV from Viglen)

## Step 1 Remove the Back Cover

- Slide the locking catch on the cable cover up and slide the cover to the left to remove the cable cover.
- Push the metal locking catch to the right and slide the plastic back cover straight upwards. Lift the cover away from the base unit.
- Optional** - Slide the middle section of the side panel to the rear to provide additional access to the cable bay.

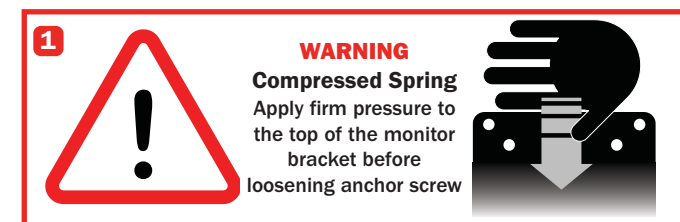


## Step 2 Attach the Monitor

- CAUTION!** Take care when loosening the monitor stand screw

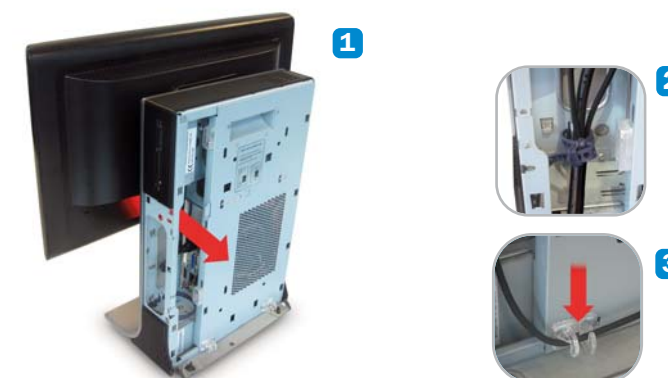
The monitor stand contains a strong spring under pressure. Apply firm pressure to the top of the monitor bracket before unscrewing Anchor Screw J.

- Fix 2x Screw B (lug screw) to the lower VESA mounting holes in the rear of the monitor. Refer to your monitor manual for instructions on how to remove the monitor's stand.
- Unlock the cable window in the base unit and feed the monitor signal and power cables through. Place the monitor face down in front of the base unit and connect the monitor cables.
- Lift the monitor onto the monitor stand VESA bracket and hang the monitor by engaging the lug screws in the lower holes.
- Hold the monitor in place and secure it using 2x Screw C.



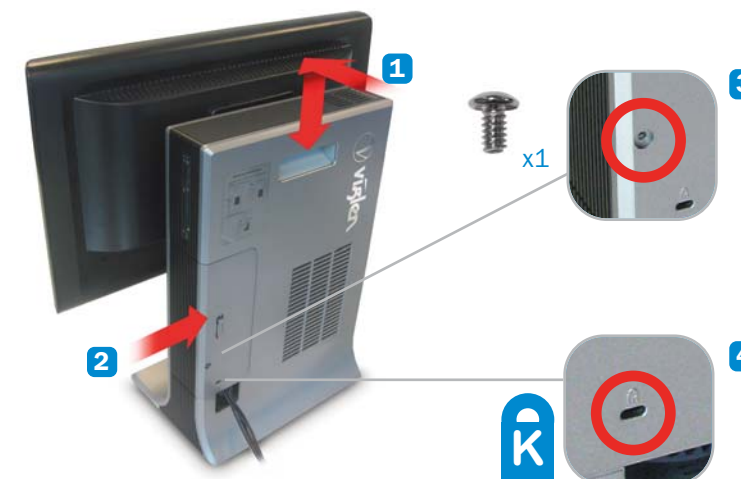
## Step 3 Connect Cables

- Connect the monitor signal cable, mouse, keyboard and other accessories.
- Secure the mouse, keyboard, power and other external cables using the cable strap at the bottom of the cable bay.
- Optional:** Cables can be channelled via the routing clips at the base of the unit.
- Optional:** Replace the side panel of the cable bay.



## Step 4 Replace the Back Cover

- Replace the back cover by applying it flat to the back of the base unit, engaging its lugs and pushing firmly downwards.
- Replace the cable cover by sliding it from the left until it locks in place.
- Optional:** Fit 1x Security Screw A into the locking clip to deter unauthorised opening.
- Optional:** Fit a Kensington-style locking cable or clip to lock the cover and secure the Viglen Integra to the desktop.



## Getting Help from Viglen

### TECHNICAL SUPPORT

If you have any queries concerning the following:

1. Hardware configuration problems;
2. You wish to return your hardware for repair or arrange a service visit (subject to contract);
3. You have installation or set-up difficulties;
4. You require additional drivers;

Please call our TECHNICAL SUPPORT department on **01727 201 850**

### CUSTOMER CARE

If you have any queries concerning the following:

1. Parts missing or damaged from your Viglen PC order;
2. Incorrect goods supplied against your Viglen PC order;
3. Any complaint with a courier or delivery in general;
4. Collection of any computers or parts;
5. You wish to return your Viglen PC for an upgrade;
6. You wish to know the status of any returned Viglen PC;

Please call our CUSTOMER CARE department on **01727 201 810**

### SPARES AND UPGRADES

If you have any queries concerning the following:

1. You have ordered or wish to order spare parts;
2. You require information on upgrading new or old systems;

Please call our SERVICE SALES department on **01727 201 815**

### 24 HOUR ASSISTANCE

If you require assistance outside of office hours, you may be able to find the information you require on our technical support website.

Drivers, Manuals and Information Guides  
[www.viglen.co.uk/support](http://www.viglen.co.uk/support)



If you know which drivers you require you may visit our FTP site for direct downloads:  
<http://download.viglen.co.uk/>

### REPLACEMENT SCREWS

All Viglen All-in-One PCs are shipped with a bag containing all the screws required for assembly, as well as appropriate anti-tamper screws for the cable cover. Note that screws for bulk-packed PCs will be shipped in a single carton. Please keep unused screws in a safe place as you may be liable for an administration charge should you require replacements.

PARS1N02 Assembly Screws for Viglen Integra

## Viglen Getting Started Guide

# integro



**Viglen Limited,**  
VHQ,  
7 Handley Page Way,  
Old Parkbury Lane,  
Colney Street, St. Albans,  
Hertfordshire,  
AL2 2DQ

Corporate Sales **01727 201 830**  
Education Sales **01727 201 860**  
Public Sector Sales **01727 201 830**  
Schools Sales **01727 201 820**

Email [sales@viglen.co.uk](mailto:sales@viglen.co.uk)  
Web [www.viglen.co.uk/startguides](http://www.viglen.co.uk/startguides)

## Important

**Please read this pamphlet before switching on the Viglen PC and store in a safe place. For further information regarding your Viglen PC please refer to the Viglen Driver CD which Includes the Drivers and Manual for your motherboard.**