

Windows 8 BIOS Setting

Vig670W system configured with Windows 7 or Windows 8.1 will have following default BIOS settings. If you wish to downgrade from Windows 8.1 to Windows 7 or legacy Operating system then BIOS must be configured to Non-UEFI mode.

Windows 8/8.1 UEFI mode BIOS settings.

Fast BOOT	[Enabled]
OS Boot Mode*	[UEFI Windows 8]
Secure Boot	[Enabled]
Secure Boot Mode	[Custom]

Windows 7 (Non UEFI Mode) BIOS settings.

Fast BOOT	[Disabled]
OS Boot Mode*	[Legacy OS]
Secure Boot	[Disabled]

*BIOS setting is available from BIOS version V1.04. Older BIOS version will have the option "UEFI Boot" Enabled or Disabled option.

To enable downgrade to Windows 7 operating system, BIOS settings must be changed to boot into Legacy BIOS mode (Non UEFI Mode).

Note

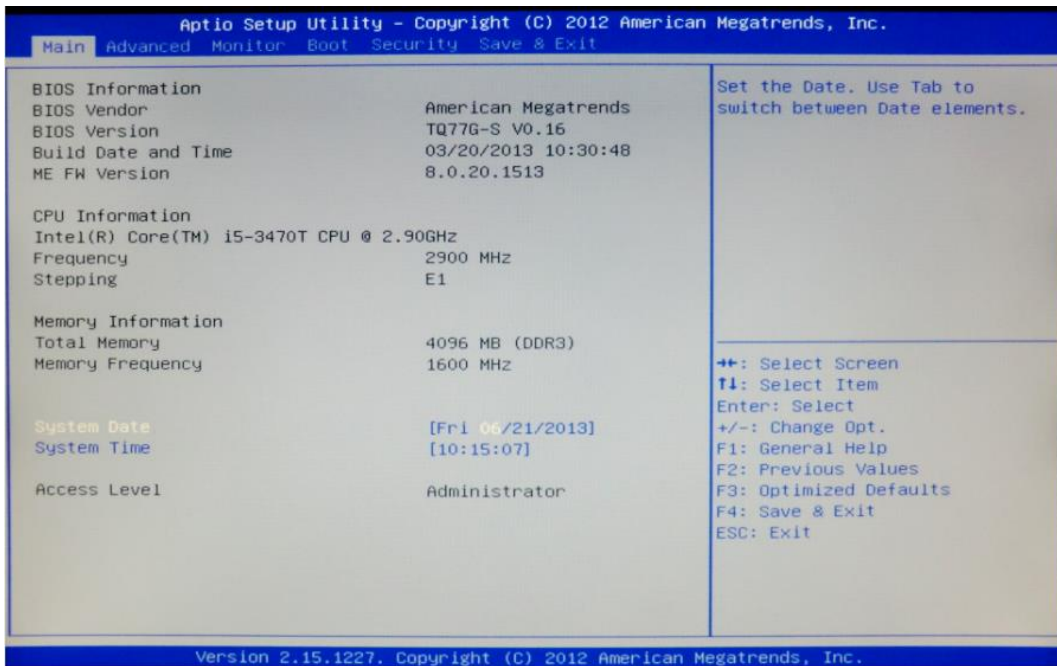
Please ensure the changes of the following settings are performed by personnel with some previous experience/knowledge of altering BIOS settings.

Accessing BIOS Setup

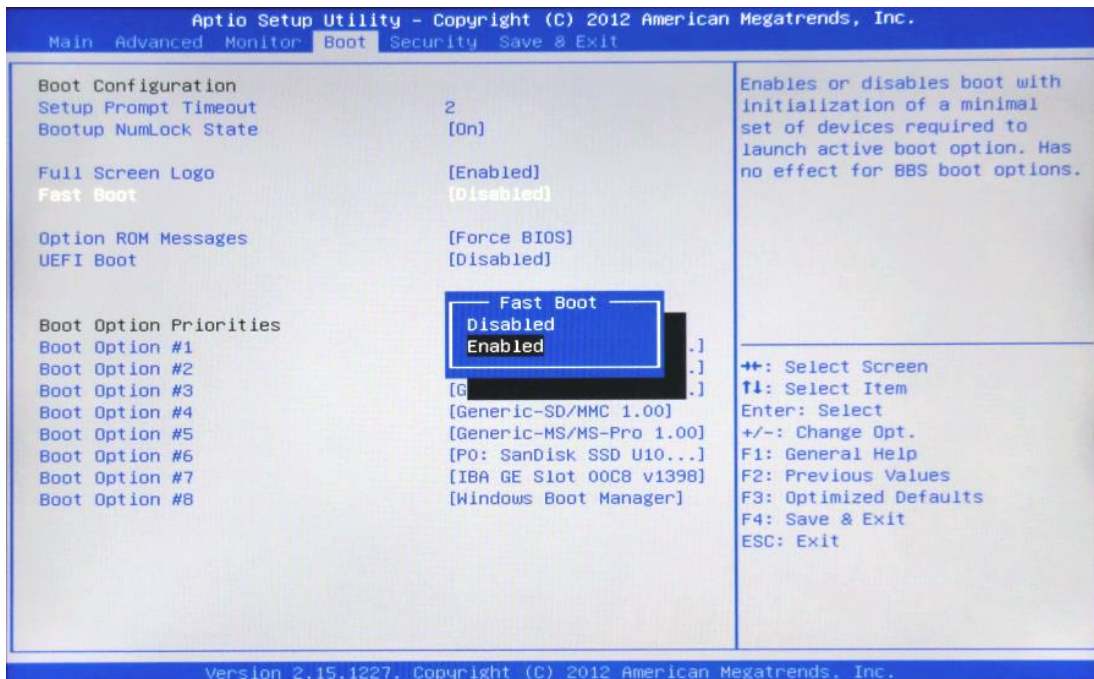
To access the BIOS, when the system is powered on repeatedly press the [DEL] key to access BIOS setup screen once the Windows 8 setup is complete to re-access the BIOS you will need to power down the system and wait 20 seconds before powering up the system; on power on Press the {DEL} key to access BIOS setup.

Enabling/Disabling Windows 8 Features

1. From the BIOS main menu select the 'Boot' tab.

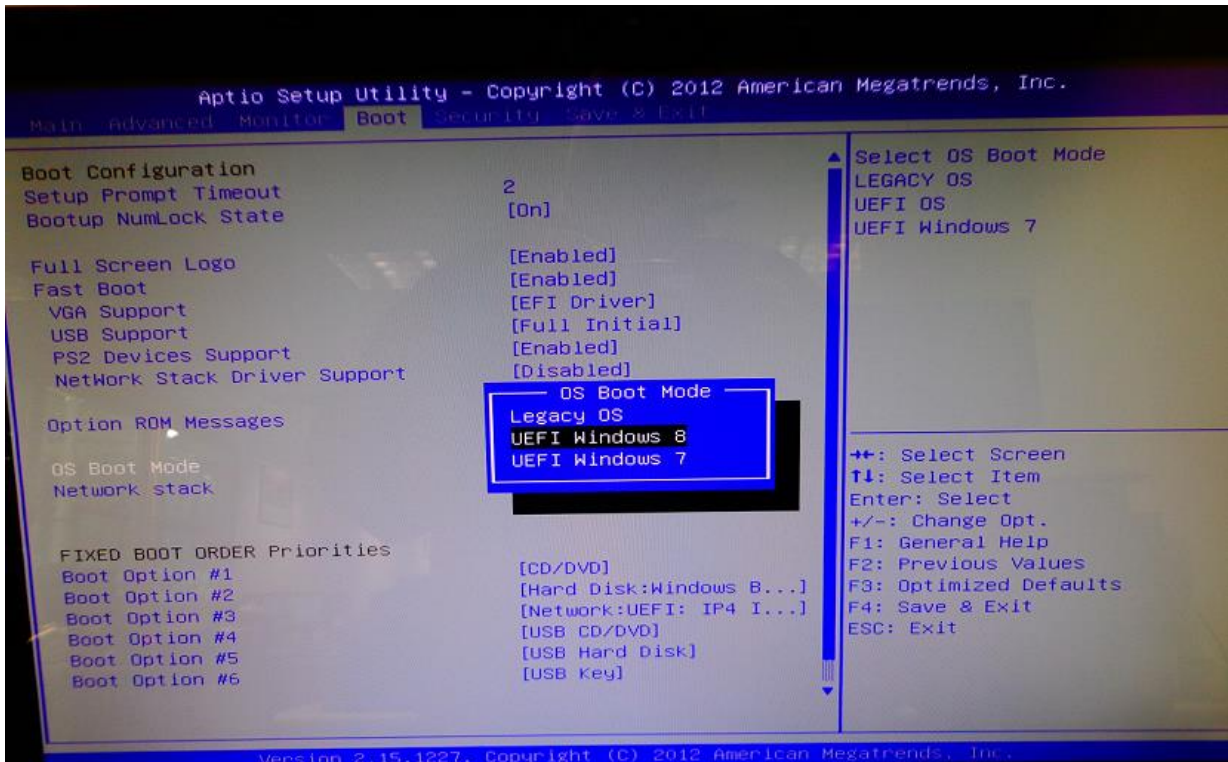


2. In the 'Boot' tab **scroll down** the options to 'Fast Boot' and **select** this option. **Set** the 'Fast Boot' option to 'Enabled'.



Fast Boot - It is recommended that this option is '**Enabled**' for Windows 8 operating systems to ensure the boot up sequence is performed at the fastest possible time.

3. In the 'Boot' tab **scroll down** the options to 'OS Boot Mode' and **select** this option. **Set** the 'UEFI Windows 8' option to 'Enabled'. For Windows 7 and Windows XP operating systems it should be set to Legacy OS.



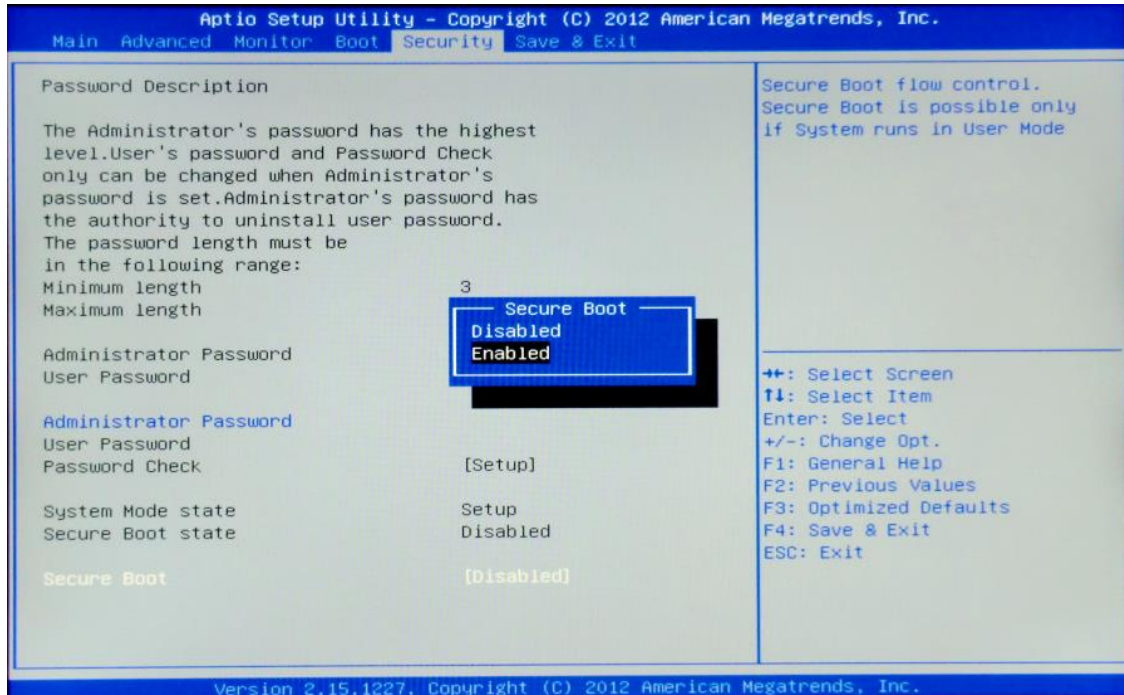
Enabling /Disabling Secure Boot

'Secure Boot' it is recommended this setting is set to 'Enabled' to initialize the Windows 8 secure boot feature when the system boots up.

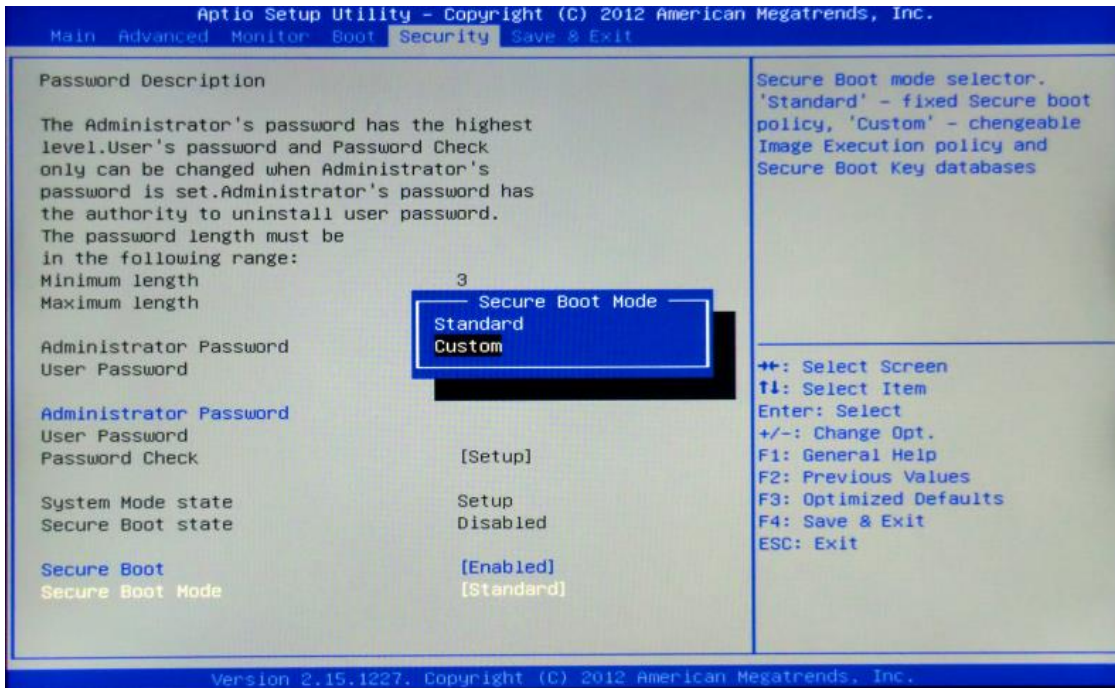
Note: Secure boot is supported under Windows 8 64Bit Operating system. This feature helps in preventing malicious software applications and "Unauthorized" operating systems from loading during the system start-up process.

To Enable Secure Boot

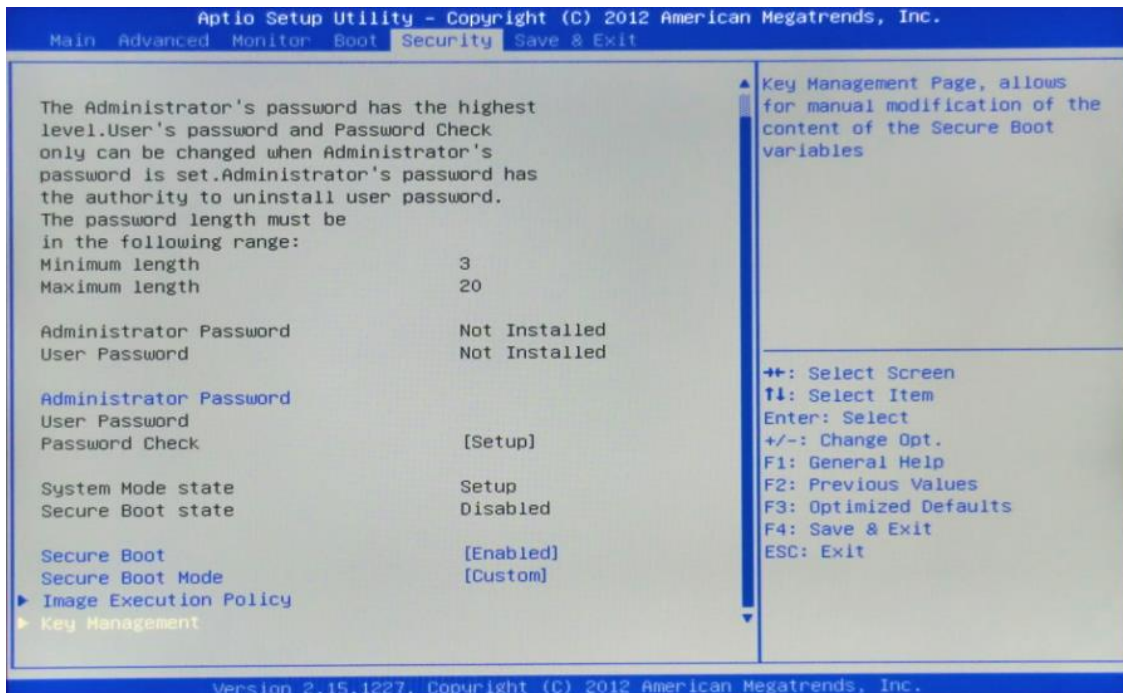
From the BIOS tab options **select** the 'Security' tab and **select the** 'Secure Boot' option, **Set** the 'Secure Boot' option to 'Enabled'



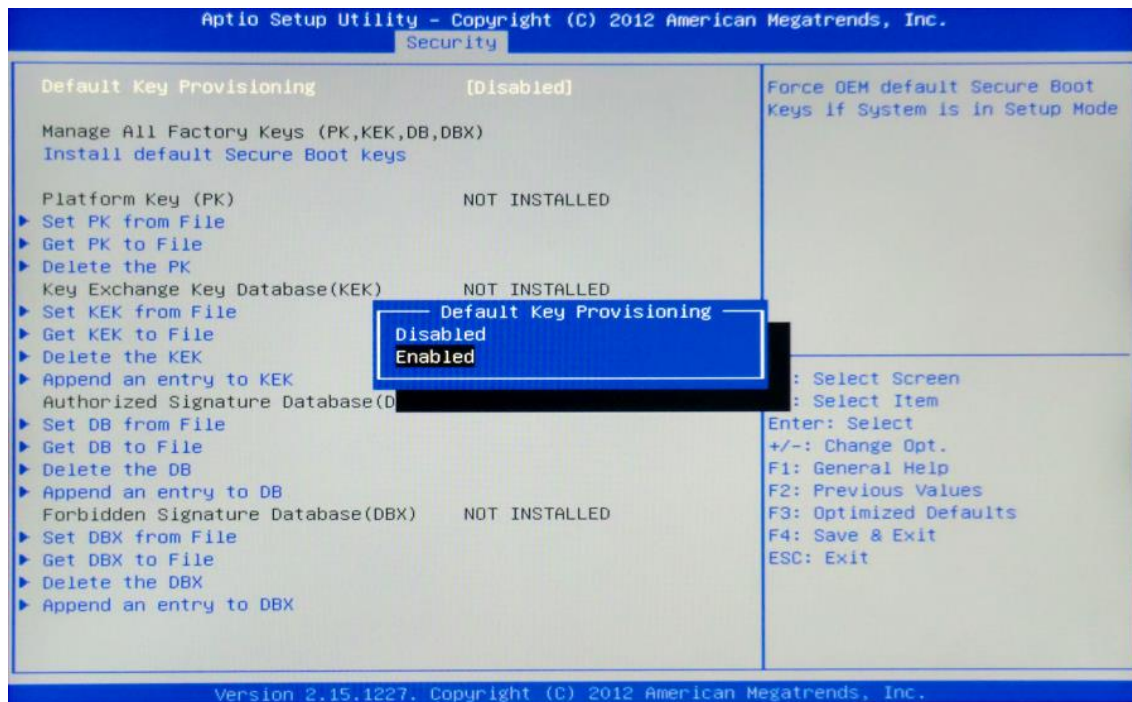
1. Once Secure Boot is **set** to 'Enabled' **scroll down** the active options from the Security Tab options and **Set** the Secure Boot Mode to 'Custom'



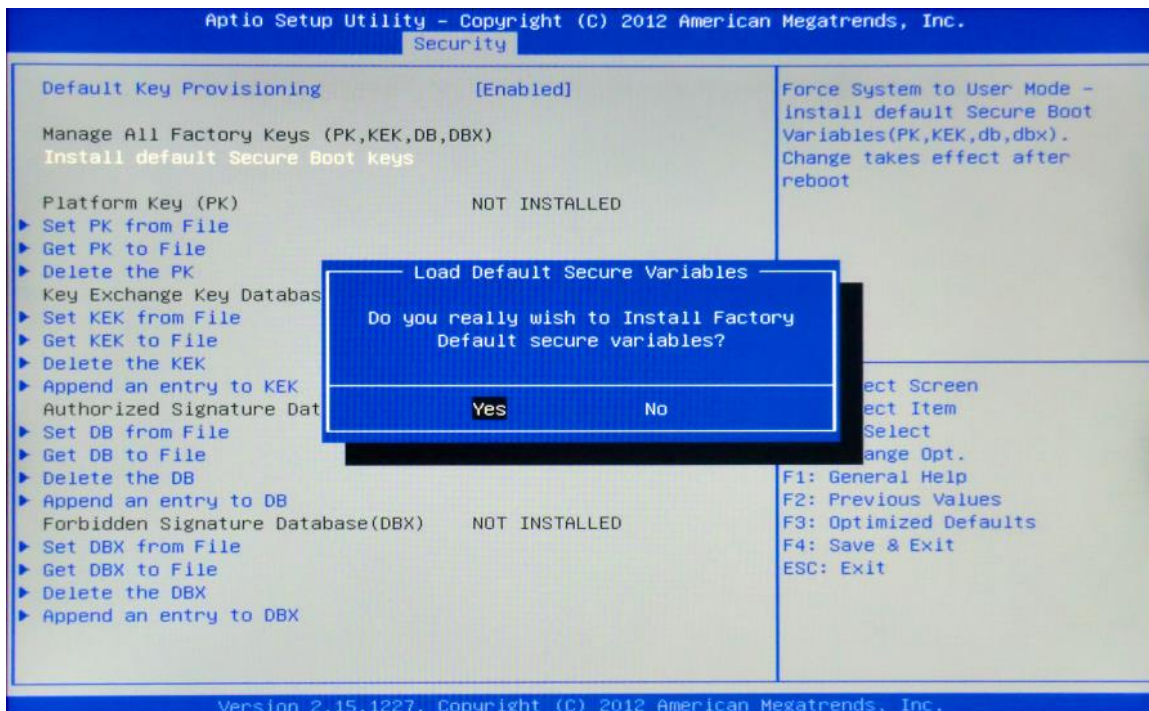
2. In Custom mode **scroll down** the active options in the Security Tab option list and **Select** the 'Key Management' Option



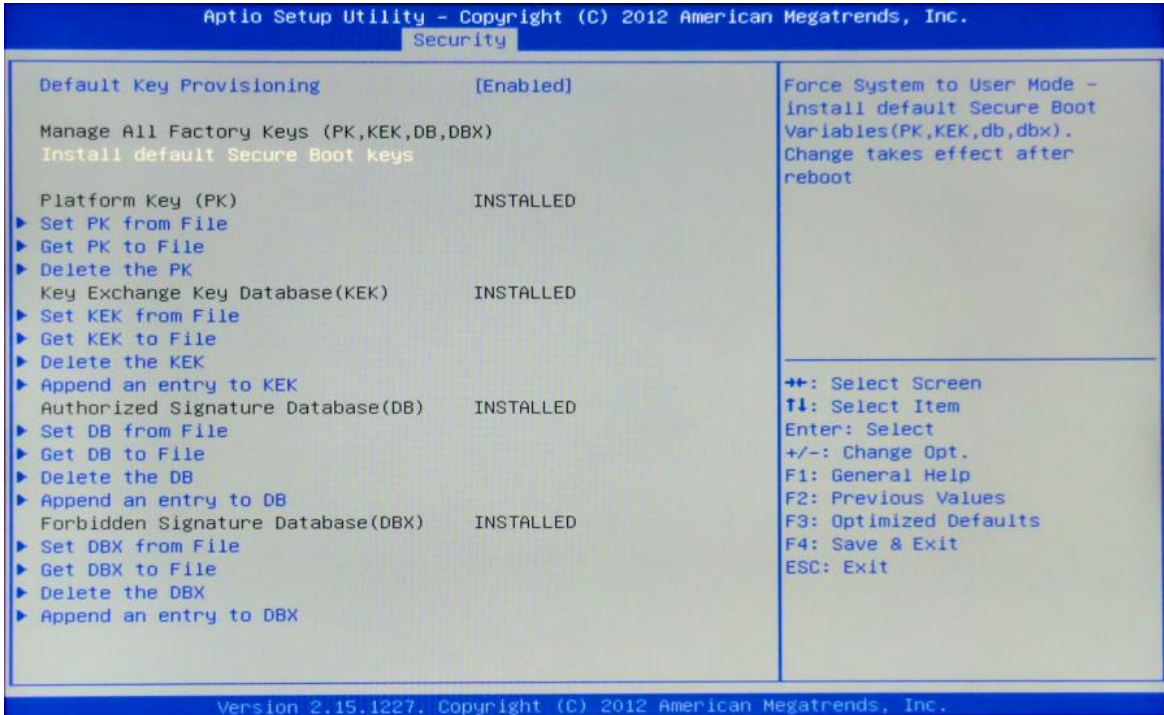
3. In the Key management options **select** the 'Default Key Provisioning' option and **Set** to 'Enabled'



4. In the Key management options **select** the 'Install default Secure Boot Keys' option and **confirm** Installation in the prompt pop up to install the default secure Boot Keys.

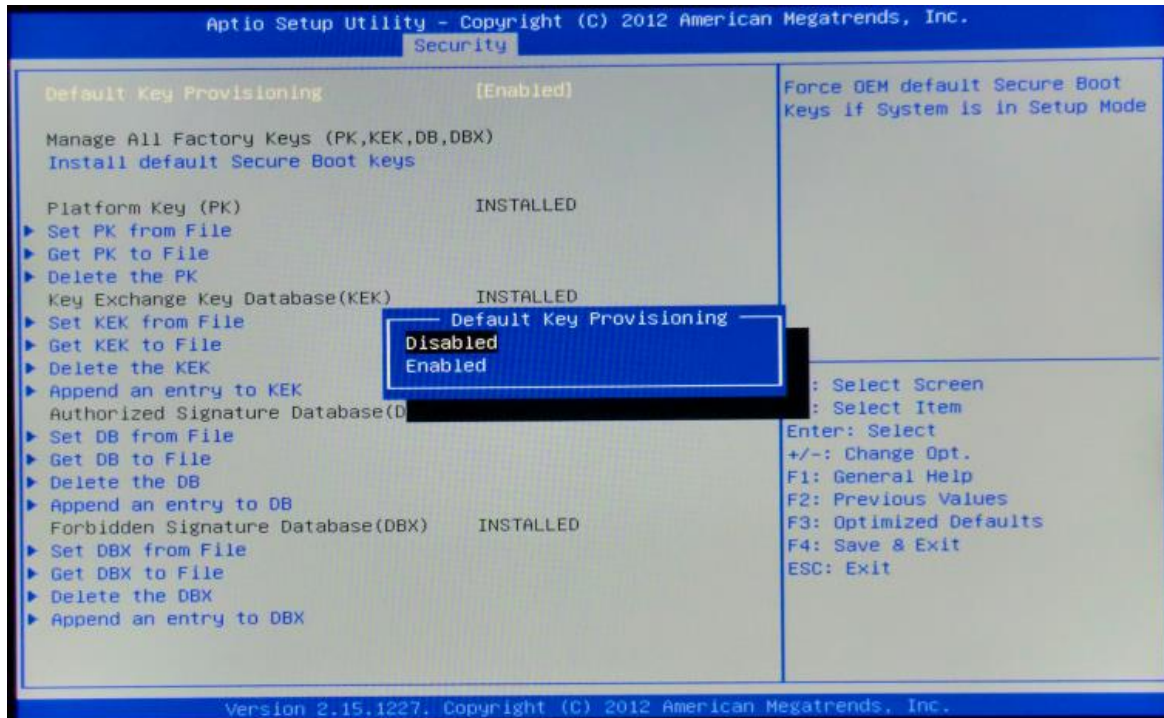


5. Once the Default Secure Boot keys are installed it will state 'Installed' as shown in below image

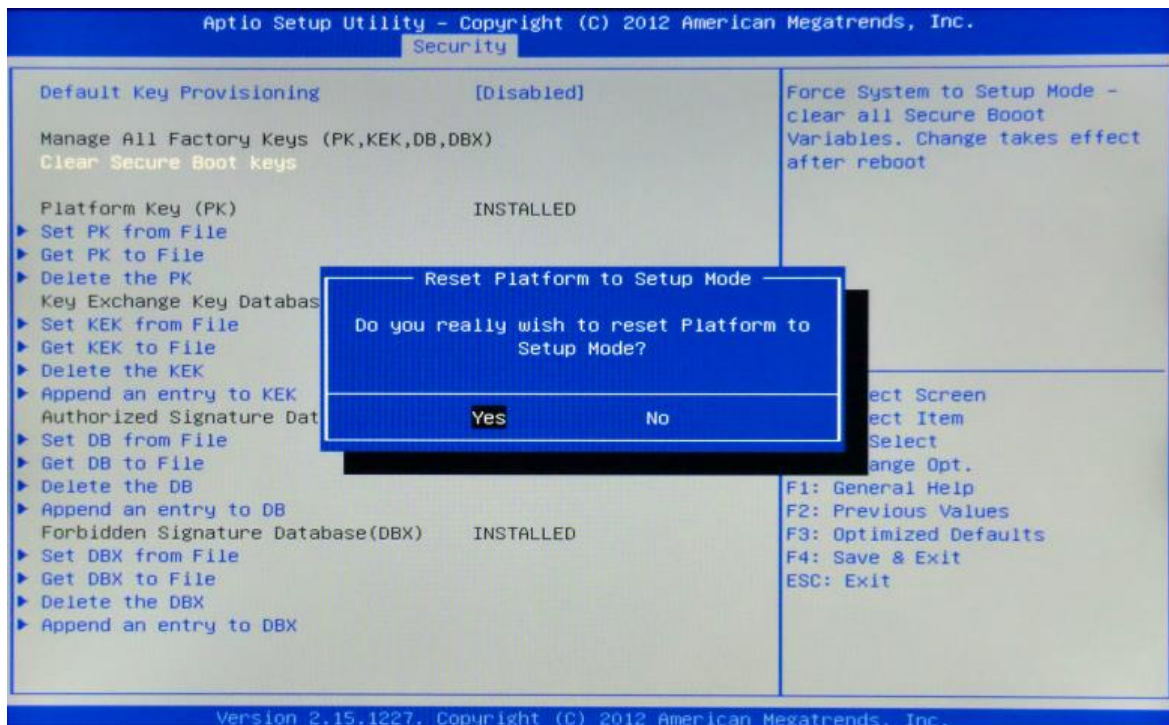


Disabling Secure Boot

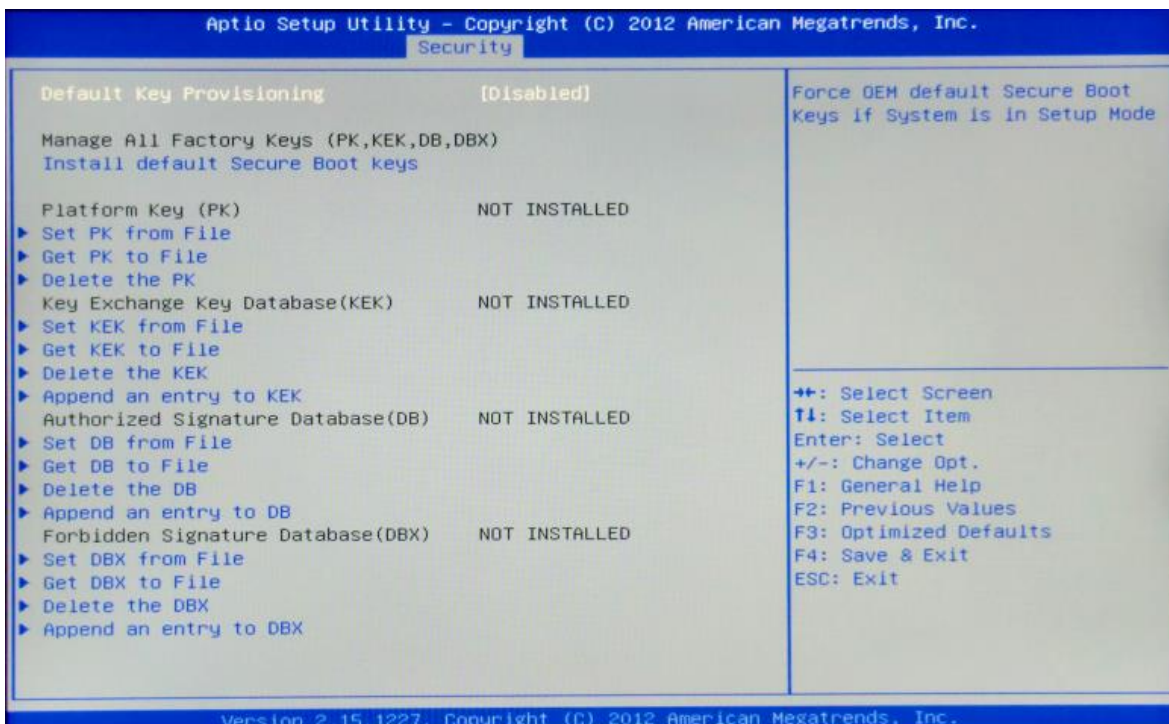
1. In the Key management options select 'Default Key Provisioning' and Set the option to 'Disabled'



2. Select 'Clear Secure Boot Keys' and confirm Installation in the prompt pop up to clear the default secure Boot Keys.

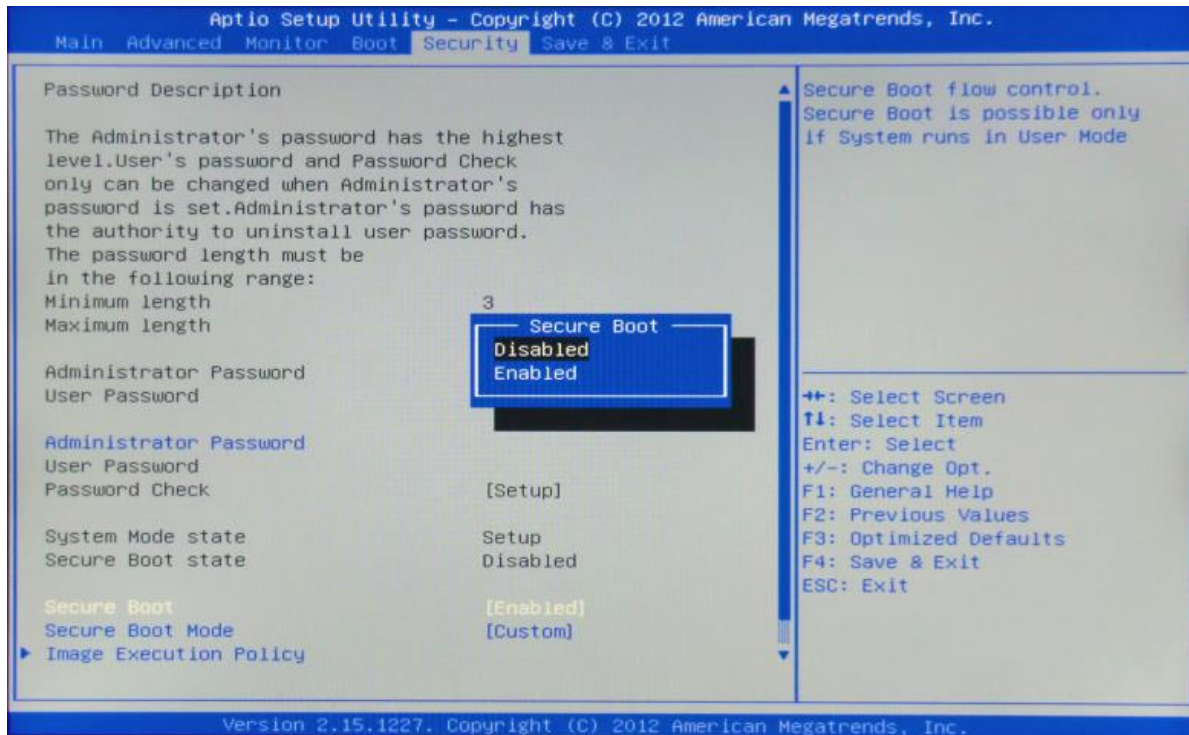


3. Once the secure Boot keys are cleared it will state 'Not Installed' as shown in below



Press Esc to exit the Key provisioning Menu.

4. Select 'Secure Boot' and set the option to 'Disabled'



Once all BIOS settings have been configured press F4 key to Save and Exit the BIOS Setup.

Additional information:

For BIOS, Drivers and Documentation enquiries please contact Viglen Technical Support Department on technical@viglen.co.uk.

Remember to include your PC serial number in all correspondence.