



## Vig710W BIOS Configuration

Latest BIOS for Vig710W motherboard is **v4.03**:

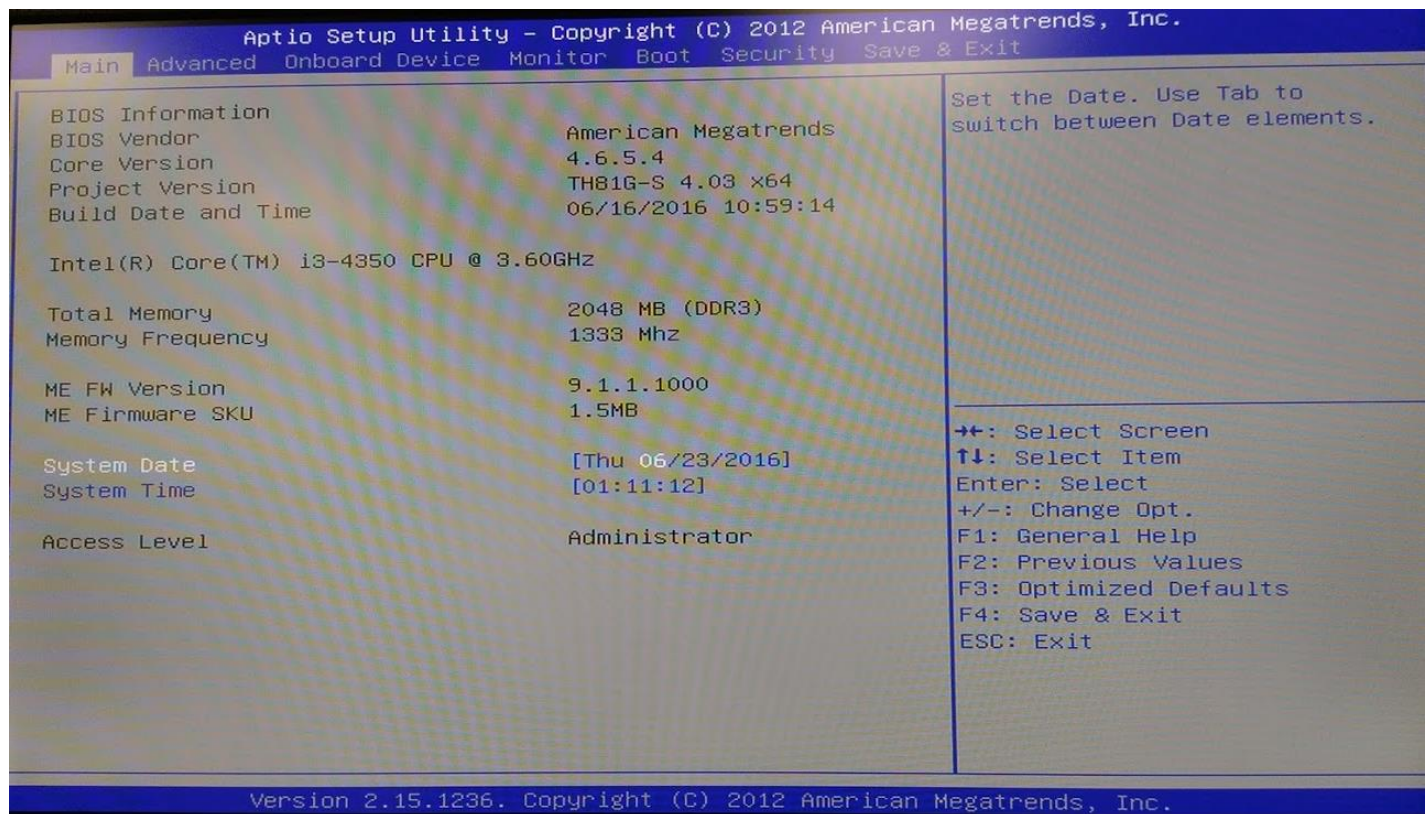
1. **Vig710W\_v4.03\_16-06-2016\_Win7\_LVDS**
2. **Vig710W\_v4.03\_13-06-2016\_Win8.1-10\_LVDS**

Both BIOS are configured by default with **LVDS** settings for AIO chassis i.e. – for Omnino 5 and Omnino L21.

When the motherboard is configured in Genie Micro Chassis (non AIO) ,BIOS settings for 'Active LFP' needs to be set to: **No LVDS**

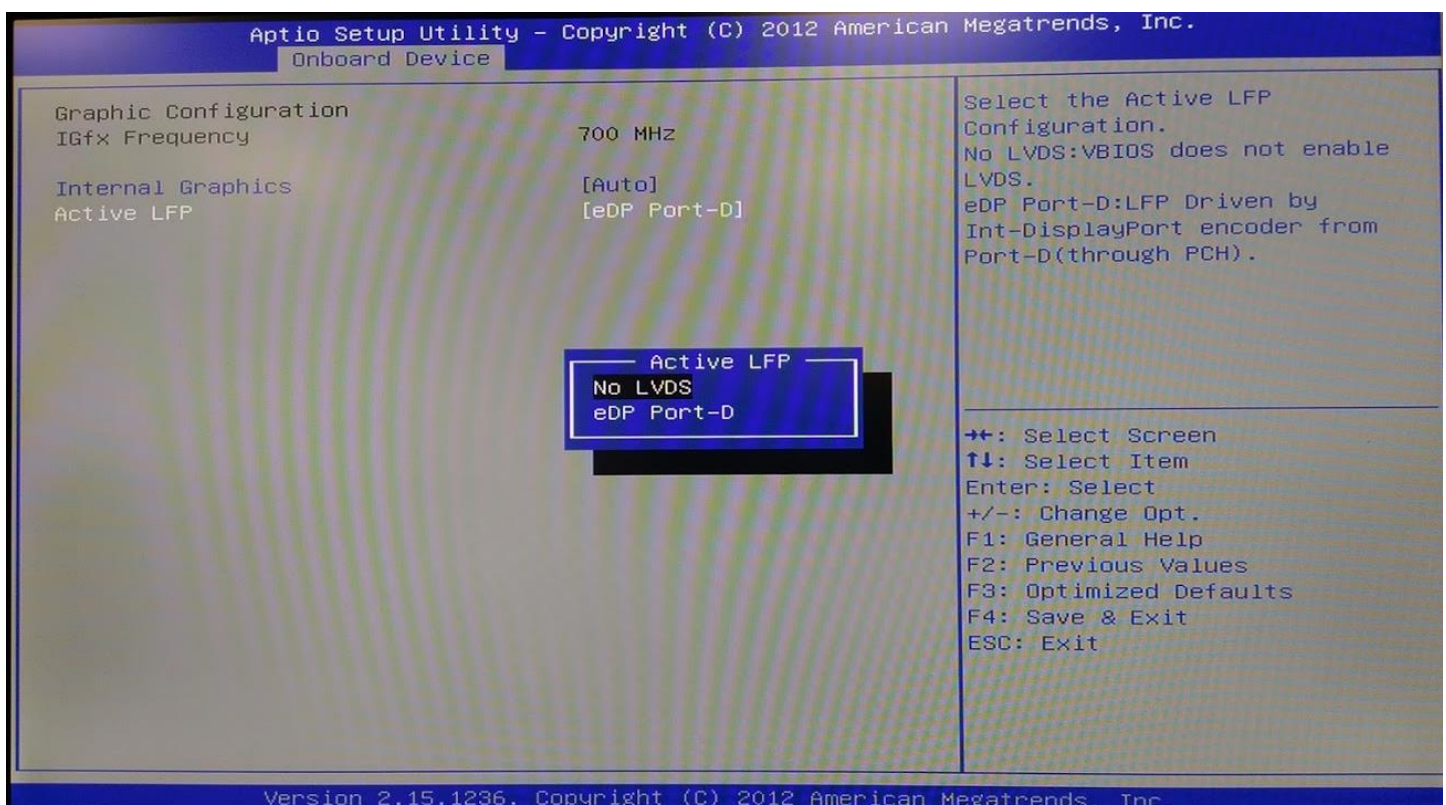
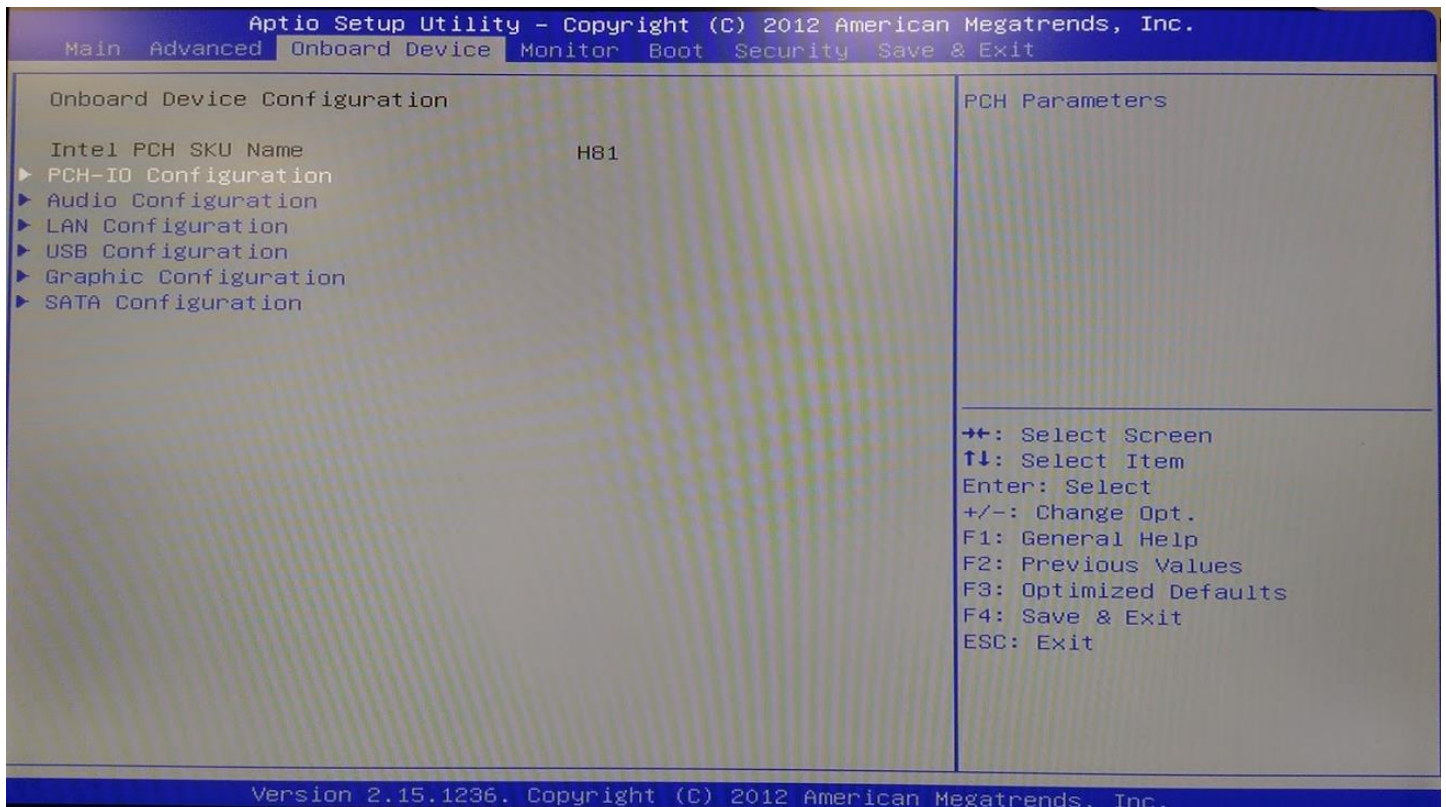
**Please follow these steps:**

1. Press **F7** key during POST to load up BIOS screen.





- Once BIOS screen is loaded, navigate to **Onboard Device** → **Graphic Configuration** and set "Active LFP" to **"NO LVDS"**.





3. Press **F4** key and then select "Yes" to save the BIOS settings and boot into the system.

