

Vig580s Motherboard Manual

Viglen

**Great
Minds
Think**

viglen

COMPUTERS ♦ NETWORKS ♦ SOLUTIONS

Viglen EMC and the 'CE' mark

CE Marking

As we begin the 21st century, European standards are being harmonised across borders. If products comply with the same standards in all European countries, product exporting and importing is made simple - paving our way to a common market. If you buy a product with a 'CE' mark on it (shown below), on the box, in the manual, or on the guarantee - it complies with the currently enforced directive(s).



Introduction to EMC

EMC (Electromagnetic Compatibility) is the term used to describe certain issues with RF (Radio Frequency) energy. Electrical items should be designed so they do not interfere with each other through RF emissions. E.g. If you turn on your microwave, your television shouldn't display interference if both items are CE marked to the EMC directive.

If emitted RF energy is not kept low, it can interfere with other electrical circuitry - E.g. Cars Automatic Braking Systems have been known to activate by themselves while in a strong RF field. As this has obvious repercussions ALL electrical products likely to cause RF related problems have to be 'CE' marked from 1st January 1996 onwards.

If a product conforms to the EMC directive, not only should its RF emissions be very low, but its immunity to RF energy (and other types) should be high. The apparatus has to resist many 'real world' phenomena such as static shocks and mains voltage transients.

Viglen's Environment laboratory

To gain a 'CE' mark, the Viglen computer range has had to undergo many difficult tests to ensure it is Electromagnetically Compatible. These are carried out in the in-house 'Environment lab' at Viglen Headquarters. We have made every effort to guarantee that each computer leaving our factory complies fully with the correct standards. To ensure the computer system maintains compliance throughout its functional life, it is essential you follow these guidelines.

- Install the system according to Viglen's instructions
- If you open up your Viglen:
 - Keep internal cabling in place as supplied.
 - Ensure the lid is tightly secured afterwards
 - Do not remove drive bay shields unless installing a 'CE' marked peripheral in its place
 - The clips or 'bumps' around the lips of the case increase conductivity - do not remove or damage.
 - Do not remove the ferrite ring from the L.E.D cables.
 - Only use your Viglen computer with 'CE' marked peripherals

This system has been tested in accordance with European standards for use in residential and light industrial areas-this specifies a 10 meter testing radius for emissions and immunity. If you do experience any adverse affects that you think might be related to your computer, try moving it at least 10 meters away from the affected item. If you still experience problems, contact Viglen's Technical Support department who will put you straight through to an EMC engineer - s/he will do everything possible to help. If modifications are made to your Viglen computer system, it might breach EMC regulations. Viglen take no responsibility (with regards to EMC characteristics) of equipment that has been tampered with or modified.



This symbol on the product or on its packaging indicates that the product shall not be treated as household waste. Instead it shall be handed over to the applicable collection point for recycling of electrical and electronic equipment. By ensuring this product is disposed of correctly, you will help prevent potential negative consequences for the environment and human health, which could otherwise be caused by inappropriate waste handling of this product. The recycling of materials will help to conserve natural resources. For more detailed information about recycling of this product, please contact your local city office, your household waste disposal service or Viglen Ltd.

Copyrights and Trademarks

Please note

The material in this manual is subject to change without notice.

Trademarks

Microsoft, Windows, Windows NT, Windows 95, Windows 98, Windows ME, Windows 2000 Pro, Windows XP Pro and MS-DOS are registered trademarks of Microsoft Corporation. IBM PC, XT, AT and PS/2 are trademarks of International Business Machines Corporation. Pentium and Pentium Pro are registered trademarks of Intel Corporation. AMI BIOS is a registered trademark of American Megatrends. All other trademarks are acknowledged. JAC-UP, Genie, Contender, Dossier, Vig, Viglen, and Envy are trademarks of Viglen Limited.

Copyright and Patents

This manual and all accompanying software and documentation are copyrighted and all rights reserved. This product, including software and documentation, may not, in whole or in part, be copied, photocopied, translated or reduced to any electronic or machine-readable form, without prior written consent except for copies retained by the purchaser for backup.

© Copyright 2006 Viglen Limited
All Rights Reserved
VIG580S Manual Version 1.0
Printed in the United Kingdom

Liability

No warranty or representation, either expressed or implied, is made with respect to this documentation, its quality, performance, merchantability or fitness for a particular purpose. As a result the documentation is licensed as is, and you, the licensee, are assuming the entire risk as to its quality and performance. The vendor reserves the right to revise this operation manual and all accompanying software and documentation and to make changes in the content without obligation to notify any person or organisation of the revision or change.

In no event will the vendor be liable for direct, indirect, special, incidental or consequential damages arising out of the use or inability to use this product or documentation, even if advised of the possibility of such damages. In particular, the vendor shall not have liability for any hardware, software or data stored or used with the product, including the costs of repairing, replacing or recovering such hardware, software or data.

Contents

| | |
|---|-----------|
| Chapter 1: Motherboard Overview | 5 |
| Feature Summary | 6 |
| Motherboard Special Features | 8 |
| Additional BIOS Features | 9 |
| Onboard LED Support | 10 |
| System Board Components | 11 |
| Back Panel Connectors | 15 |
| Chapter 2: System Board Options | 18 |
| Overview of Jumper Settings | 19 |
| Motherboard Jumper Settings | 20 |
| Motherboard Connectors | 22 |
| Central Processing Unit (CPU) | 29 |
| System Memory | 34 |
| Expansion Slots (PCI & PCI-Express) | 39 |
| Replacing the Clock/CMOS RAM Battery | 40 |
| Chapter 3: Solving Problems | 41 |
| Resetting the System | 41 |
| Troubleshooting Procedures | 42 |
| Problems Operating Add-in Boards | 43 |
| Problems & Suggestions | 44 |
| Chapter 4: System BIOS | 46 |
| What is the BIOS? | 46 |
| The Power-On Sequence | 46 |
| Managing and Updating your BIOS | 47 |
| AFUDOS Utility | 47 |
| BIOS Setup Program | 50 |
| BIOS Menu Screen | 51 |
| BIOS Main Menu | 54 |
| Primary, Third and Fourth IDE Master/Slave Sub-menu | 55 |
| IDE Configuration Sub-menu | 57 |

| | |
|--|-----------|
| System Information Sub-menu | 58 |
| BIOS Advanced Menu | 58 |
| USB Configuration Sub-menu | 59 |
| CPU Configuration Sub-menu | 61 |
| Chipset Sub-menu | 63 |
| Onboard Devices Configuration Sub-menu | 64 |
| PCI PnP Sub-menu | 66 |
| BIOS Power Menu | 68 |
| APM Configuration Sub-menu | 69 |
| Hardware Monitoring Sub-menu | 71 |
| BIOS Boot Menu | 72 |
| Boot Device Priority Sub-menu | 72 |
| Boot Settings Configuration Sub-menu | 73 |
| Security Sub-menu | 74 |
| BIOS Exit Menu | 77 |
| | |
| Chapter 5: Glossary | 79 |
| Notes | 83 |
| | |
| Chapter 6: Suggestions | 84 |

Chapter 1: Motherboard Overview

Introduction

This manual describes the Viglen VIG580S Motherboard inside your computer. The Motherboard is the most important part of your computer. It contains all of the CPU, memory and graphics circuitry that make the computer work.

The Motherboard contains the very latest CPU design, the Intel Pentium 4™ processor, which includes Intel NetBurst® Microarchitecture with 800 MHz system bus, Internet Streaming SIMD Extensions, Intel Hyper-Threading Technology hardware support for multi-threaded applications and Intel's Extended Memory 64-bit technology (EM64T). All of which are designed to vastly improve both multimedia and communications on your PC. The combination of this technology and Viglen expertise make this a formidable computer.

The Motherboard contains the very latest CPU design that supports the Intel® Pentium® 4 family including Hyper-Threading enabled CPU's and the very latest Extreme Edition CPU's. All of the supported CPU's include Intel's® **MMX Technology**. MMX technology adds a total of 57 new instructions to the CPU, all of which are designed to vastly improve both multimedia and communications on your PC. The combination of the Intel® processor, MMX technology and Viglen expertise make this a formidable computer.

This manual contains technical information about the Viglen VIG580S Motherboard and other hardware components inside your computer. If you are new to computers we recommend that you read the user guide first. If you are an experienced computer user this manual should provide all the information you will need to perform simple upgrades and maintenance.

We hope that this manual is both readable and informative. If you have any comments for suggestions about how we could improve the format then please fill out the form at the back of the manual and send it to us.

Above all we hope that you enjoy using your Viglen computer.

Feature Summary

The Vig580s Motherboard supports Intel® Core 2 Duo®, Pentium® 4 and Celeron® processors with up to 4MB of second-level cache integrated in a LGA775 Socket package operating at speeds up to 3.8GHz.

The Motherboard features:

Form factor:

- Micro ATX form factor: 9.6 in x 9.6 in (24.5 cm x 24.4 cm)

CPU Support:

- LGA775 socket for Intel® Core 2 Duo®/ Pentium®D Pentium® 4/ Intel Celeron® processor
- Supports Intel® Hyper-Threading Technology

Chipset Support:

- Northbridge: Intel® 945G Graphics Memory Controller Hub (GMCH)
- Southbridge: Intel® ICH7

Front Side Bus (FSB):

- 1066/800/533 MHz

Memory Support:

- Dual-channel memory architecture
- 4 x 240-pin DIMM sockets support unbuffered non-ECC
- 667/533/400MHz DDR2 memory modules

Graphics Support:

- Integrated Intel® Graphics Media Accelerator 950

Expansion Support:

- 1 x PCI Express x16 slot for discrete graphics card
- 1 x PCI Express x1 slot
- 2 x PCI slots

Storage Support:

- Intel® ICH7 Southbridge supports:
 - 1 x Single-channel Ultra DMA 100/66/33

- 4 x Serial ATA 2

High Definition Audio Support:

- Realtek® ALC882 8-channel CODEC
- S/PDIF out interface support
- Universal Audio Jack Sensing Technology support (UAJ®)

LAN Support:

- Intel® Pro1000 PCI Gigabit Ethernet LAN controller

USB Support:

- Supports up to 8 USB 2.0 ports

BIOS Features:

- 4 MB Flash ROM, AMI BIOS, PnP, DMI2.0, SM BIOS 2.3, WfM2.0

Rear Panel Port Support:

- 1 x PS/2 mouse port
- 1 x Parallel port
- 1 x LAN (RJ-45) port
- 8-channel audio ports
- 4 x USB 2.0 ports
- 1 x VGA port
- 1 x Serial port
- 1 x PS/2 keyboard port

Internal Connectors:

- 1 x Floppy disk drive connector
- 1 x Primary IDE connector
- 4 x Serial ATA 2 connectors
- 1 x CPU fan connector
- 2 x Chassis fan connector
- 2 x USB 2.0 connectors (total 4 USB ports)
- 1 x 24-pin ATX power connector
- 1 x 4-pin ATX 12 V power connector
- 1 x Optical drive audio connector
- 1 x Front panel High Definition Audio connector
- 1x Chassis intrusion connector
- 1 x Speaker Out connector
- 1 x Digital audio connector
- 1 x System panel connector

Power Requirements:

- ATX power supply (with 24-pin and 4-pin 12 V plugs)
- ATX 12 V 2.0 compliant

Motherboard Special Features

Latest Processor Technology

The Motherboard comes with a 775-pin surface mount Land Grid Array (LGA) socket designed for the Intel® Core 2 Duo, Pentium® D, Pentium 4 processor in the 775-land package. The Motherboard supports the Intel® Pentium® 4 processor with 533, 800 and 1066MHz Front Side Bus (FSB). The Motherboard also supports the Intel® Hyper-Threading Technology and is fully compatible with Intel® 04B and 04A processors.

Intel 945G

The Intel® 945G graphics memory controller hub (GMCH) and the ICH7 I/O controller hub provide the vital interfaces for the Motherboard. The GMCH features the Intel® Graphics Media Accelerator 950, an integrated graphics engine for enhanced 3D, 2D, and video capabilities. The GMCH provides the interface for a processor in the 775-land package with 533/800/1066 MHz front side bus (FSB), dual channel DDR2 at speeds of up to 667 MHz, and PCI Express x16 interface for a graphics card.

The Intel® ICH7 Southbridge represents the seventh generation I/O controller hub that provides the interface for PCI Express and 8-channel high definition audio.

Dual Channel DDR2 Memory Support

Employing the Double Data Rate (DDR2) memory technology, the Motherboard supports up to 4 GB of system memory using DDR2 667/533DIMMs. The ultra-fast 667 MHz memory bus delivers the required bandwidth for the latest 3D graphics, multimedia, and Internet applications.

PCI Express Interface

The Motherboard fully supports PCI Express, the latest I/O interconnect technology that speeds up the PCI bus. PCI Express features point-to-point serial interconnections between devices and allows higher clock speeds by carrying data in packets. This high speed interface is software compatible with existing PCI specifications.

Serial ATA Technology

The Motherboard supports the Serial ATA technology through the Serial ATA interfaces and the Intel® ICH7. The SATA specification allows for thinner, more

flexible cables with lower pin count, reduced voltage requirement, and up to 300MB/s data transfer rate.

8-Channel High Definition Audio

Onboard is the Realtek® ALC882 7.1-channel audio CODEC. This CODEC is fully-compliant with Intel® High Definition Audio standard (192 KHz, 24-bit audio). With the CODEC, 8-channel audio ports, and S/PDIF interfaces, you can connect your computer to home theatre decoders to produce crystal-clear digital audio.

S/PDIF Digital Sound Ready

The Motherboard supports the S/PDIF Out function through the S/PDIF interface at mid board. The S/PDIF technology turns your computer into a high-end entertainment system with digital connectivity to powerful audio and speaker systems.

USB 2.0 Technology

The Motherboard implements the Universal Serial Bus (USB) 2.0 specification, dramatically increasing the connection speed from the 12 Mbps bandwidth on USB 1.1 to a fast 480 Mbps on USB 2.0. USB 2.0 is backward compatible with USB 1.1.

Additional BIOS Features:

Crash Free BIOS 2

This feature allows you to restore the original BIOS data from the support CD in case when the BIOS codes and data are corrupted. This protection eliminates the need to buy a replacement ROM chip.

Q-Fan Technology

The ASUS Q-Fan technology smartly adjusts the fan speeds according to the system loading to ensure quiet, cool, and efficient operation.

EZ Flash BIOS

With the ASUS EZ Flash, you can easily update the system BIOS even before loading the operating system. No need to use a DOS-based utility or boot from a floppy disk.

Onboard LED Support

The Motherboard comes with a standby power LED that lights up to indicate that the system is ON, in sleep mode, or in soft-off mode. This is a reminder that you should shut down the system and unplug the power cable before removing or plugging in any Motherboard component. The illustration below shows the location of the onboard LED.

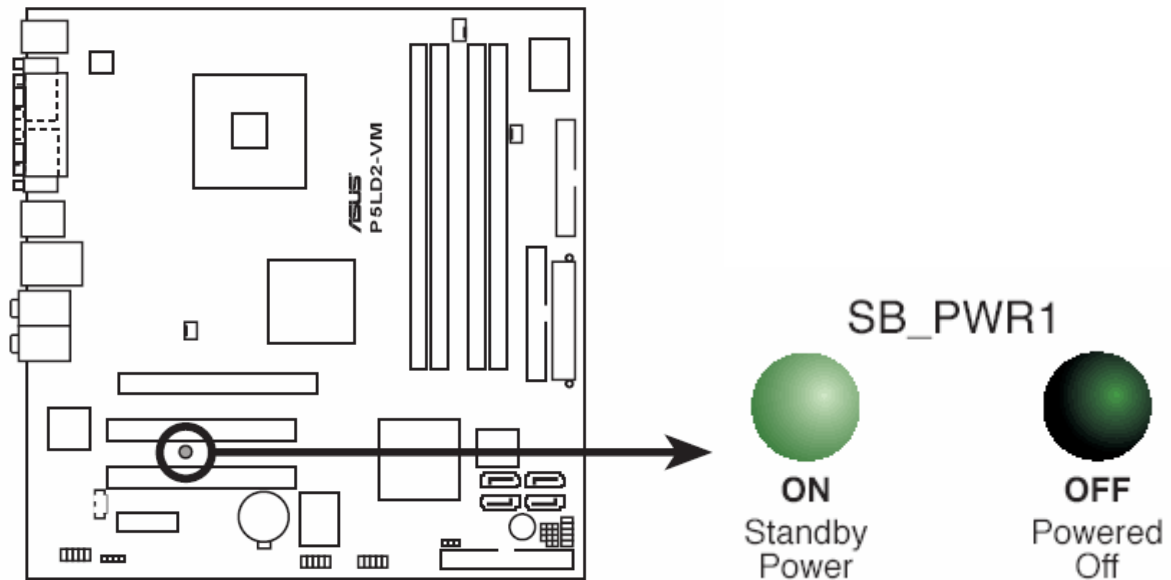


Figure 1: Motherboard LED

System Board Components

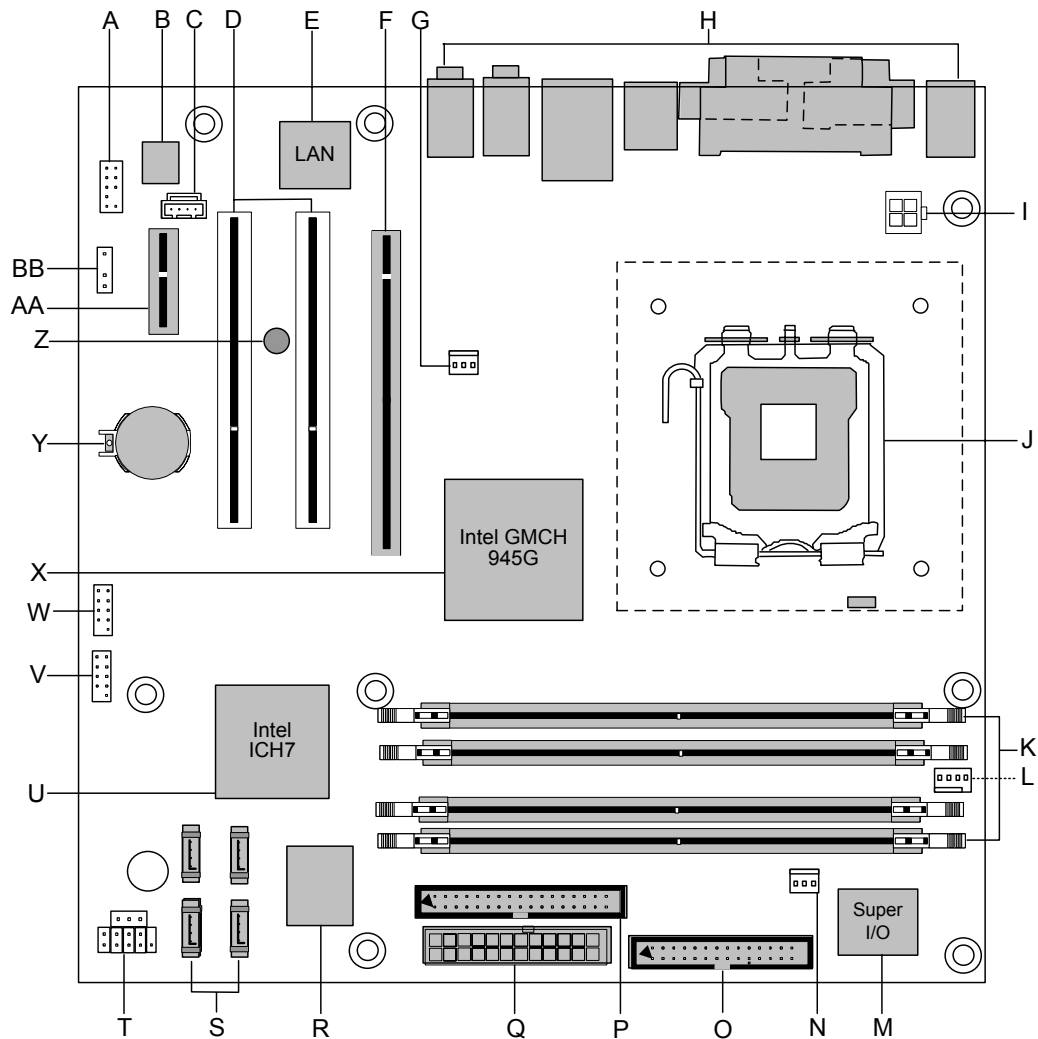


Figure 2: Motherboard Layout & Components

Table 1: Motherboard Connections

| | |
|--|-------------------------------------|
| A: Front Panel Audio Connector | O: Floppy drive connector |
| B: Realtek ALC882 audio codec | P: Parallel IDE (P-ATA) connector |
| C: Aux/CD internal audio connector | Q: Power connector (24 way ATX2.2) |
| D: PCI Conventional bus add-in card connectors | R: 4 Mbit Firmware Hub (FWH) |
| E: Intel Pro1000 PCI Gigabit Ethernet Controller | S: Serial ATA 2 (S-ATA) connectors |
| F: PCI Express x16 bus add-in card connector | T: Front panel connector |
| G: FAN Header | U: Intel ICH 7 |
| H: Back panel connectors | V: Front panel USB connectors |
| I: +12V power connector (ATX12V) | W: Front panel USB connectors |
| J: LGA775 processor socket (Socket T) | X: Intel GMCH 945G |
| K: DIMM Channel A & B Sockets | Y: Battery Power to Motherboard RTC |
| L: Processor fan connector | Z: Motherboard LED |
| M: I/O controller | AA: PCI Express x1 bus add-in card |
| N: FAN Connector | BB: SPIDIF_OUT (not fitted) |

Overview of System Board Components

A – Front Panel Audio Connector

This connector allows for the use of front facing audio in a desktop chassis. The connector allows the signal to be passed through from the rear connector to the front connector.

B – Realtek ALC882 audio codec

Decodes different audio formats.

C – Aux/CD internal audio connector

Allows the audio from the CD-ROM to be run through the internal audio via an analogue cable.

D – PCI Conventional bus add-in card connectors

Allows a PCI device to be fitted such as a fire wire card or wireless card.

E – Intel Pro1000 PCI Gigabit Ethernet Controller

Onboard LAN controller.

F – PCI Express x16 bus add-in card connector

Allows a PCI Express x16 device to be fitted to the Motherboard. E.g. Graphics card

G – FAN Header

Rear chassis fan connector

H – Back panel connectors

The ports on the back panel include: PS/2, Parallel, Serial, VGA, 4 x USB, RJ45 and 6 x 3.5mm audio jack sockets.

I – +12V power connector (ATX12V)

Provides additional power to the processor.

J – LGA775 processor socket (Socket T)

This is the socket in which the processor is installed into.

K – DIMM Channel A & B Sockets

This allows up to 4GB of DDR2 RAM to be installed. Up to 1GB of RAM in each slot.

L – Processor fan connector

Allows for the processor fan to be connected. The fan header is PWM compliant.

M – I/O controller

Handles all the input/output signals to and from the Motherboard.

N – FAN Header

Controls System FAN depending on system load and temperature.

O – Floppy drive connector

This allows a floppy drive to be added to the Motherboard. The port is slotted to ensure correct installation.

P – Parallel IDE (P-ATA) connector

This allows up to 2 devices, such as CD/DVD drives and hard drives to be added to the IDE channel. The port is slotted to ensure correct installation.

Q – Power connector (24 way ATX2.2)

This is the main power connector.

R – 4 Mbit Firmware Hub (FWH)

This is an optional feature which is not offered by Viglen

S – Serial ATA (S-ATA) connectors

This allows for up to 4 devices. One device can be installed on one S-ATA connector on the Motherboard running at 300MB/s.

T – Front panel connector

This is the panel to which the case cables are connected, such as the power switch. Power LED etc.

U – Intel ICH7

V – Front panel USB connectors

This allows an additional 2 USB ports to be added with the use of a cable.

W – Front panel USB connectors

This allows an additional 2 USB ports to be added with the use of a cable.

X – Intel® 82945G Graphics Memory / Controller Hub (GMCH)

The Intel® 945G graphics memory controller hub (GMCH) and the ICH7 I/O controller hub provide the vital interfaces for the Motherboard. The GMCH features the Intel® Graphics Media Accelerator 950, an integrated graphics engine for enhanced 3D, 2D, and video capabilities. The GMCH provides the interface for a processor in the 775-land package with 533/800/1066 MHz front side bus (FSB), dual channel DDR2 at speeds of up to 667 MHz, and PCI Express x16 interface for a graphics card.

Y – Battery

The battery keeps the CMOS memory when the system isn't turned on.

Z – Motherboard LED

Indicates whether the Motherboard has any power connected to it

AA – PCI Express x1 bus add-in card

Allows a PCI Express x1 device to be fitted to the Motherboard. E.g. Fire wire card

BB – SPIDIF_OUT (not supported)

This is an optional feature which is not offered by Viglen.

Back Panel Connectors

The Motherboard external IO connectors are attached to a metallic I/O shield. This shield serves several purposes:

- It protects the sensitive Motherboard from any external EMC interference.
- It stops the computer from interfering with other electrical devices.
- It allows the Motherboard to be easily upgraded in the future without having to resort to buying a whole new case. Simply change the I/O shield to match the Motherboard.

The I/O shield provides external access to PS/2 keyboard and mouse connectors as well as one serial port, one parallel port, four USB ports, one LAN Port and the audio connectors.

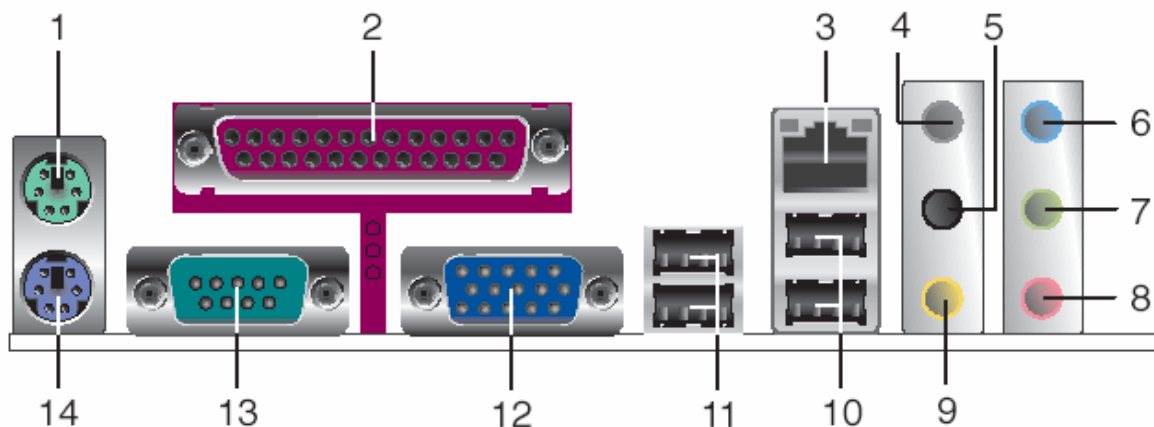


Figure 3: Rear I/O Shield

Note: Power to the computer should be turned off before a keyboard or mouse is connected or disconnected.

(1) PS/2 Mouse Port (Green)

This port is for a PS/2 mouse

(2) Parallel Port

The 25-pin port connects a parallel printer, a scanner, or other devices.

(3) LAN (RJ-45) port

This port allows 10/100/1000 Mbps connection to a Local Area Network (LAN) through a network hub.

(4) Rear Speaker Out Port (Gray)

This port connects to the rear speakers on a 4-channel, 6-channel or 8-channel audio configuration

(5) Side Speaker Out Port (Black)

This port connects to the side speakers in an 8-channel audio configuration.

(6) Line in Port (Light Blue)

This port connects a tape, CD, DVD player or other audio sources.

(7) Line Out Port (Lime)

This port connects a headphone or a speaker. In 4-channel, 6-channel, and 8-channel mode, the function of this port becomes Front Speaker Out.

(8) Microphone Port (Pink)

This port connects to a microphone.

(9) Center/Subwoofer Port (Yellow Orange)

This port connects the center/subwoofer speakers.

Table 2: Audio 2, 4, 6, or 8-Channel Configuration

| Port | Headset 2-Channel | 4-Channel | 6-Channel | 8-Channel |
|----------------------|------------------------------|------------------|-------------------|-------------------|
| Light Blue | Line In | Line In | Line In | Line In |
| Lime | Line Out | Front Speak Out | Front Speaker Out | Front Speaker Out |
| Pink | Mic In | Mic In | Mic In | Mic In |
| Grey | - | Rear Speaker Out | Rear Speaker Out | Rear Speaker Out |
| Black | - | - | - | Side Speaker Out |
| Yellow Orange | - | - | Center/Subwoofer | Center/Subwoofer |

(10) USB 2.0 Ports 3 and 4

These two 4-pin Universal Serial Bus (USB) ports are available for connecting USB 2.0 devices.

(11) USB 2.0 Ports 1 and 2

These two 4-pin Universal Serial Bus (USB) ports are available for connecting USB 2.0 devices.

(12) Video Graphics Adapter Port

This 15-pin port is for a VGA monitor or other VGA-compatible devices.

(13) Serial Port

This 9-pin COM1 port is for pointing devices or other serial devices.

(14) PS/2 Keyboard Port (Purple)

This port is for a PS/2 keyboard.

Chapter 2: System Board Options

The VIG580S Motherboard is capable of accepting Core 2 Duo and Pentium® D CPU's. RAM can be upgraded to a maximum of 4GB using DDR2 400/533/667 SDRAM DIMMs Non ECC Unbuffered memory.

WARNING!

Unplug the system before carrying out the procedures described in this chapter. Failure to disconnect power before you open the system can result in personal injury or equipment damage. Hazardous voltage, current, and energy levels are present in this product. Power switch terminals can have hazardous Voltages present even when the power switch is off.

The procedures assume familiarity with the general terminology associated with personal computers and with the safety practices and regulatory compliance required for using and modifying electronic equipment.

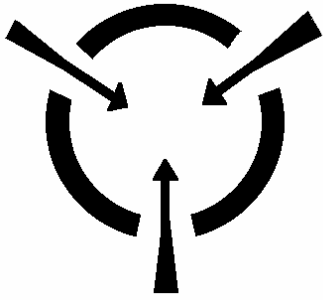
Do not operate the system with the cover removed. Always replace the cover before turning on the system.

As the colours of the wires in the mains lead of this computer may not correspond with the coloured markings identifying the terminals in your plug precede as follows:

The wire which is coloured green-and-yellow must be connected to the terminal in the plug which is marked by the letter **E** or by the safety Earth symbol \perp or coloured green or green-and-yellow.

The wire which is coloured blue must be connected to the terminal which is marked with the letter **N** or coloured black.

The wire which is coloured brown must be connected to the terminal which is marked with the letter **L** or coloured red.



CAUTION!

The Viglen Vig580s motherboard and associated components are sensitive electronic devices. A small static shock from your body can cause expensive damage to your equipment.

Make sure you are earthed and free of static charge before you open the computer case. If you are unsure about upgrading your computer, return it to Viglen so a qualified engineer can perform the upgrade.

STEPS TO TAKE TO PREVENT STATIC DISCHARGE:

1. The best way to prevent static discharge is to buy an anti-static strap from your local electrical shop. While you are wearing the strap and it is earthed, static charge will be harmlessly bled to ground.
2. Do not remove the component from its anti-static protective packaging until you are about to install it.
3. Hold boards by the edges - try not to touch components / interface strips etc.

Note: *We recommend that you return your computer to the service department for upgrading. Any work carried out is fully guaranteed. Upgrades should only be carried out by persons who are familiar with handling IC's, as incorrect installation will invalidate the guarantee.*

Overview of Jumper Settings

The VIG580S Motherboard contains the latest technology to offer an almost jumper less configuration. All Core 2 Duo®, Pentium® D and Pentium® 4 CPUs are automatically detected and the Speed is automatically set from the information provided by the CPU.

CAUTION!

Never remove jumpers using large pliers as this can damage the pins. The best way to remove a jumper is to use a small pair of tweezers or fine needle-nosed pliers.

Never remove a jumper when the computer is switch on. Always switch the computer off first.

Motherboard Jumper Settings

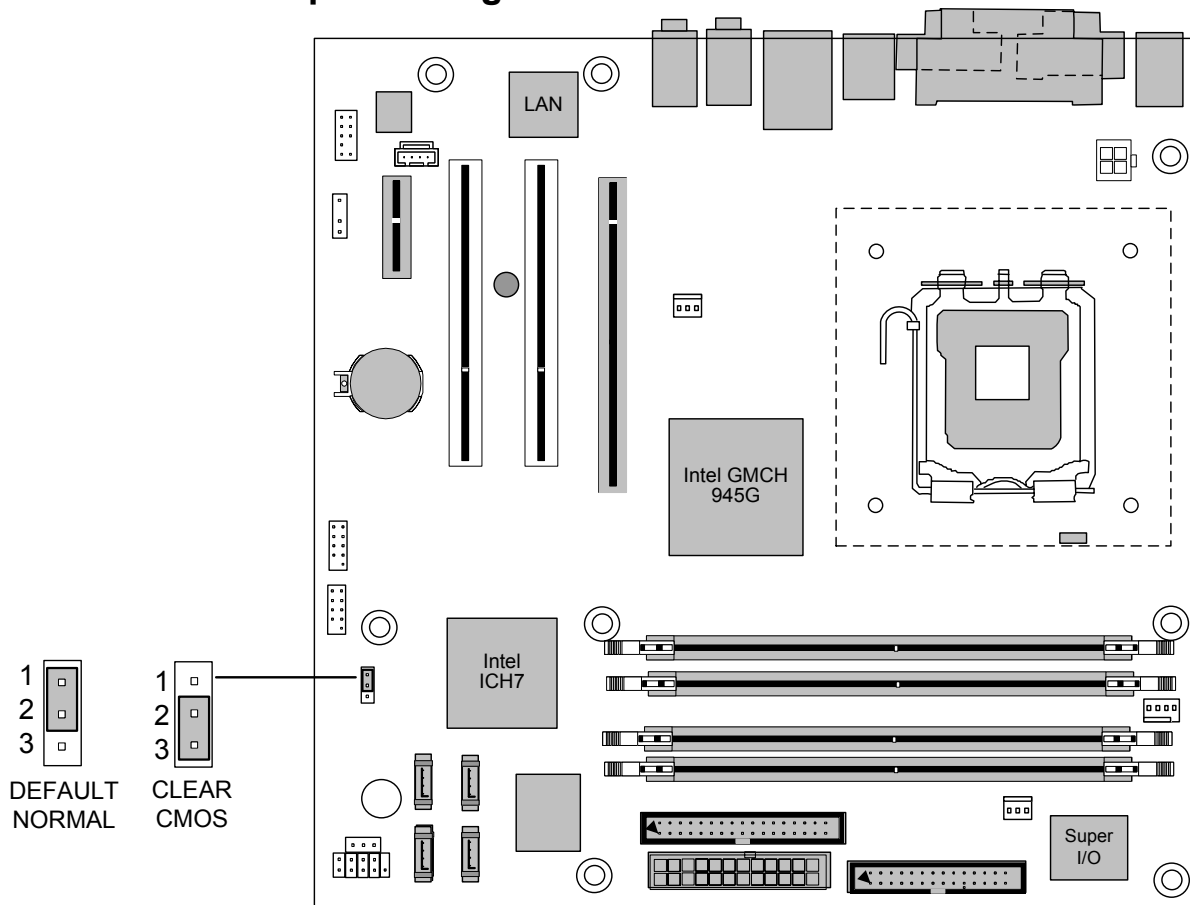


Figure 4: Motherboard Jumper Settings

Table 3: Clear CMOS Jumper Settings (CLRTC1)

| Function | Jumper | Configuration |
|------------|--------|---|
| Default | 1-2 | The BIOS uses current configuration information and passwords for booting. |
| Clear CMOS | 2-3 | Turn off the system and unplug the power cord. Move the jumper from pins 1-2 (default) to pins 2-3 for about 5~10 seconds. Then move the jumper back to pins 1-2. |

Note: Except when clearing the rtc ram, never remove the jumper on CLRTC1 default position. Removing the jumper will cause system boot failures.

Table 4: BIOS Write Protection

| Function | Jumper (JP3) | Configuration |
|---------------------------------|--------------|--|
| Write Protect Enabled (default) | 2-3 | Protects the BIOS from being written to. |
| Write Protect Disabled | 1-2 | Turn off the system and unplug the power cord. Move the jumper from pins 1-2 (default) to pins 2-3. Reboot the system. |

Table 5: Front Panel Audio Jumper Settings

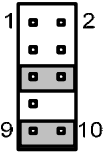
| Function | Jumper | Configuration |
|---|-----------------------|---|
| Normal  | 5 – 6 and 9- 10 | The audio line signals are routed back to the line connector. |

Table 5a: Front panel Audio Connector

| Pin | Signal name | Pin | Signal name |
|-----|------------------------------|-----|--|
| 1 | Audio Mic | 2 | Ground |
| 3 | Audio Mic Bias | 4 | VCC |
| 5 | Speaker Out Right Channel | 6 | Speaker Out Right Channel Return |
| 7 | X | 8 | Key |
| 9 | Speaker Out Left Channel | 10 | Speaker Out Left Channel Return |

USB Power Jumpers

USBPW56 & USBPW78 jumpers are set by default to +5V. Changing the jumpers to the +5VSB will enable wake up from suspend with a USB device for the front USB headers. This also applies for the rear USB ports with jumpers USBPW12 & USBPW34 when set to +5VSB. If the desired mode of operation is to wake from suspend with a USB device connected to the rear.

Keyboard Power Jumper

The Keyboard power jumper is set to +5VSB, this enables keyboard operation to wake the system from suspend. If this is not desired set the jumper to +5V.

FAN Power Jumper

The FANPWR1 jumper should not be adjusted, the system is fitted with a CPU Heatsink and FAN that uses PWM fan speed control. This is more stable than DC mode and ensures the system runs with the lowest noise depending on the CPU load.

CAUTION!

Do not move the jumper with the power on. Always turn off the power and unplug the power cord from the computer before changing the jumper.

Note: *There is no jumper setting for configuring the processor speed or bus frequency.*

Motherboard Connectors

There are connectors on the Motherboard for FAN, IDE, Power supply, CD audio, Floppy, IDE, S-ATA & Front Panel Connectors. The location and/or details of these connections are shown below.

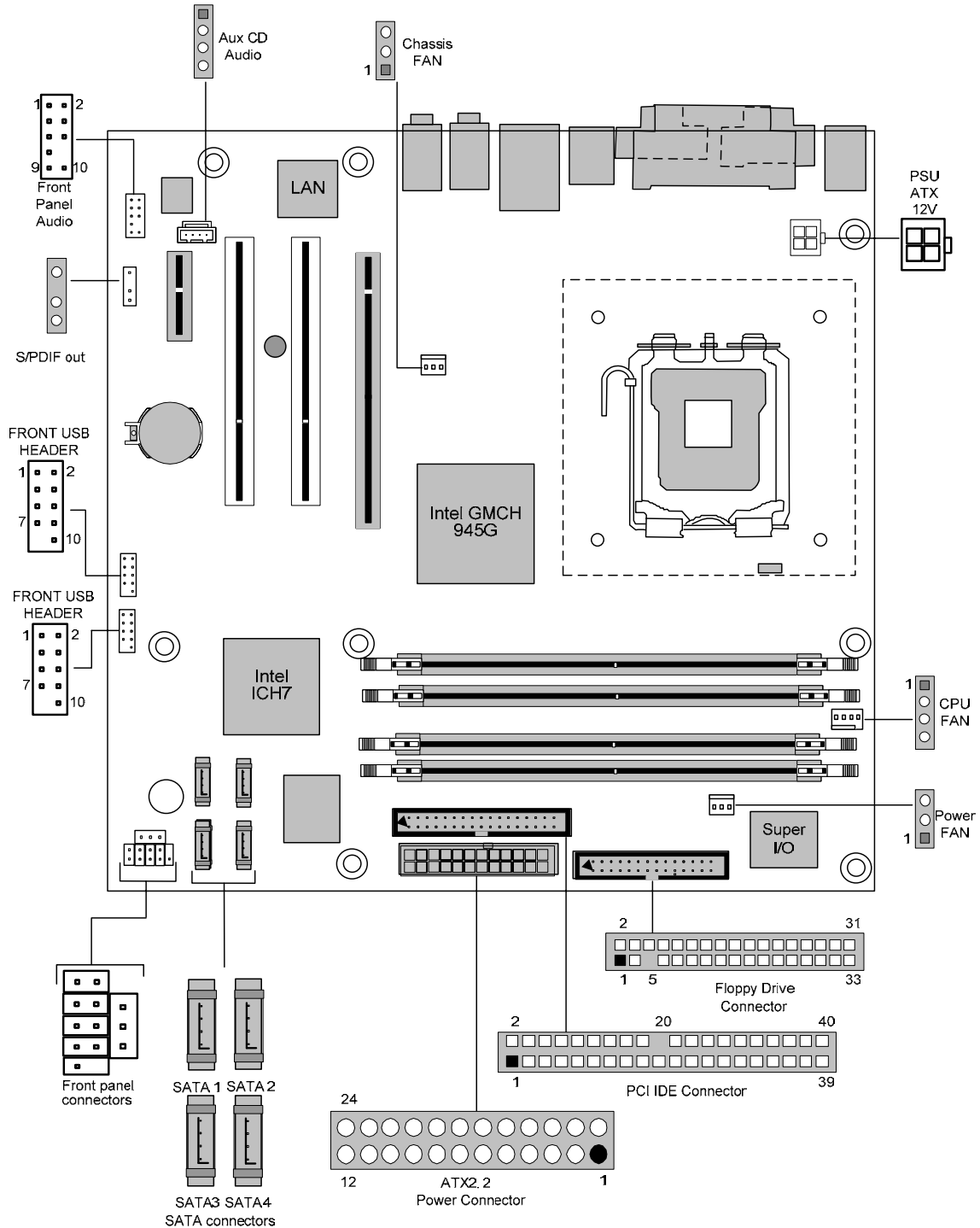


Figure 5: Motherboard Connectors

Front Panel Connectors

The following are all connectors situated along the front edge of the Motherboard. They are often connected to buttons and LED's situated on the front panel.

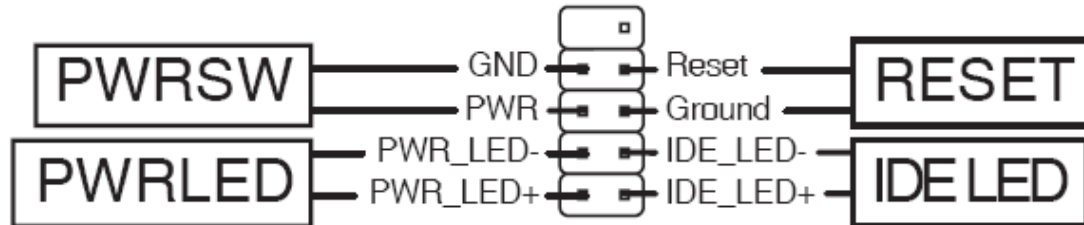


Figure 6: Front panel connectors

Hard Disk L.E.D. Connector

This goes to the Hard Disk L.E.D. on the front panel, which lights up when the IDE Hard Disk is in use.

Reset switch connector

When these pins are shorted, it will cause the computer to perform a cold reboot.

Power L.E.D.

This attaches to the power L.E.D on the front panel, to display if the computer is active or not.

Power On/Off

When these pins are shorted it turns the computer on and off.

Floppy Drive Connector

This connector is for the provided floppy disk drive (FDD) signal cable. Insert one end of the cable to this connector, and then connect the other end to the signal connector at the back of the floppy disk drive.

Note: Pin 5 on the connector is removed to prevent incorrect cable connection when using a FDD cable with a covered Pin 5.

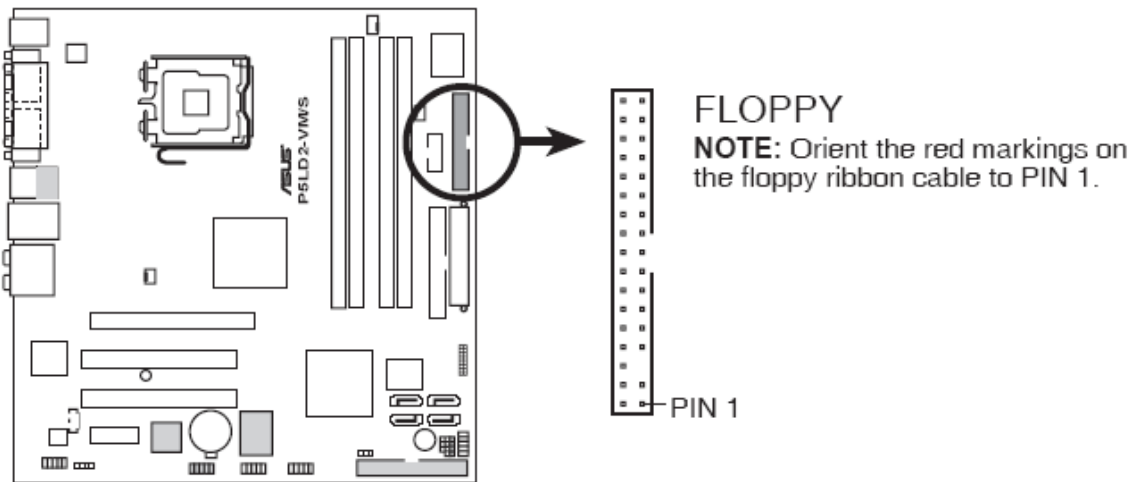


Figure 7: Floppy Drive Connector

PCI IDE Connector (40-1 pin PRI_PCIIDE1)

This connector is for an Ultra DMA 133/100/66 signal cables. The IDE connector supports up to two IDE devices (optical drive and hard disk drive).

Note:

- *Pin 20 on the IDE connector is removed to match the covered hole on the Ultra DMA cable connector. This prevents incorrect insertion when you connect the IDE cable.*
- *Use the 80-conductor IDE cable for Ultra DMA 5 (ATA100/66) IDE devices.*
- *The system automatically assigns the boot sequence of ATAPI devices connected to the PCI IDE connector.*

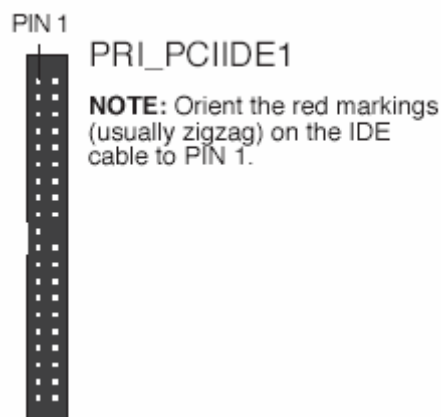


Figure 8: PCI IDE Connector

S-ATA Connectors (7-pin S-ATA1, S-ATA2, S-ATA3, S-ATA4)

These connectors are for the Serial ATA signal cables for Serial ATA hard disk drives.

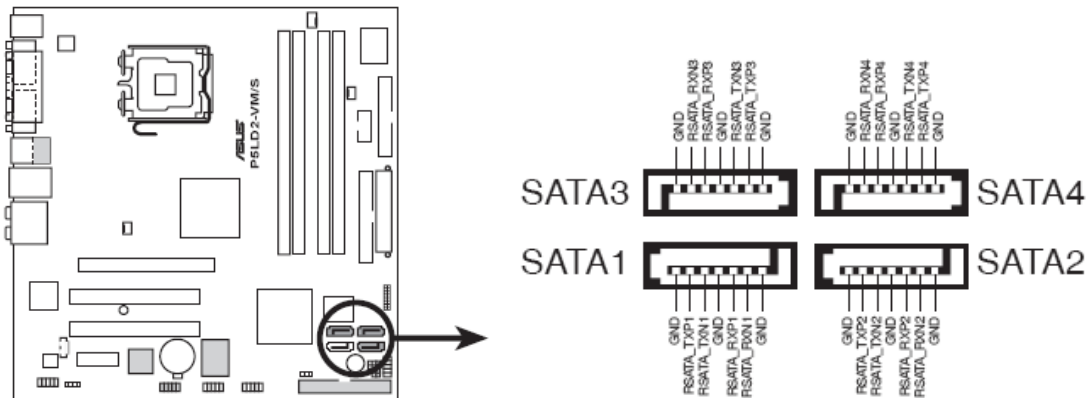


Figure 9: S-ATA Connectors

Note:

- You must install Windows® 2000 Service Pack 4 or the Windows® XP Service Pack1 before using Serial ATA hard disk drives.
- When using the connectors in standard IDE mode, connect the primary (boot) hard disk drive to the SATA1 or SATA2 connector. Refer to the table below for the recommended hard disk drive connections.

Table 6: S-ATA Master/Slave Connectors

| Connector | Colour | Setting | Use |
|----------------|--------|---------|-----------|
| S-ATA1, S-ATA2 | Red | Master | Boot Disk |
| S-ATA3, S-ATA4 | Black | Slave | Data Disk |

CPU and Chassis Fan Connectors (4-pin CPU_FAN1 & 3-pin CHA_FAN1)

The fan connectors support cooling fans of 350 mA~740 mA (8.88 W max.) or a total of 1 A~2.22 A (26.64 W max.) at +12V. Connect the fan cables to the fan connectors on the Motherboard, making sure that the black wire of each cable matches the ground pin of the connector.

CAUTION!

Do not forget to connect the fan cables to the fan connectors. Insufficient air flow inside the system may damage the Motherboard components. These are not jumpers! Do not place jumper caps on the fan connectors!

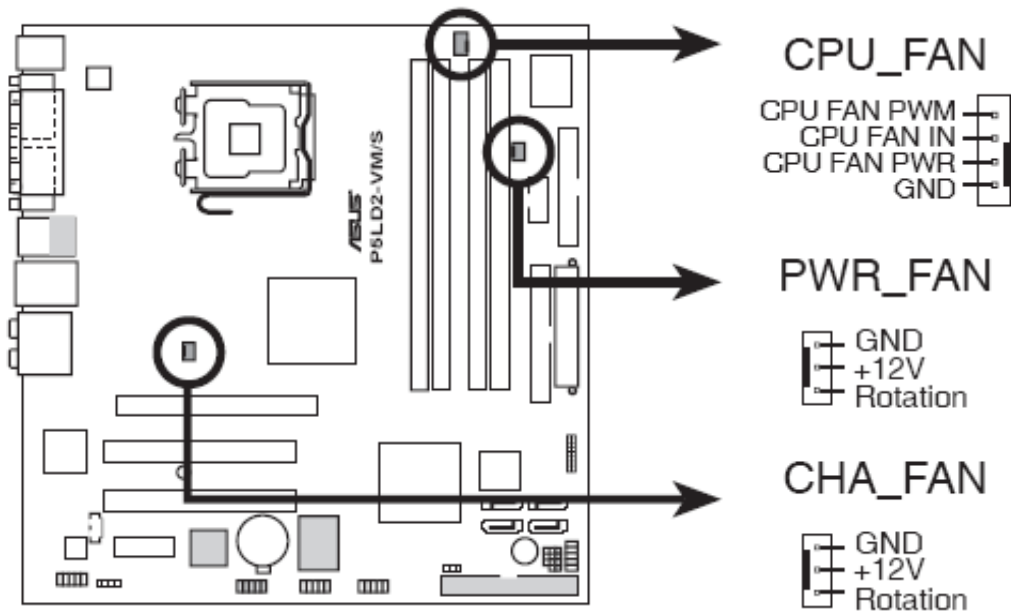


Figure 10: CPU, Power and Chassis Fan Connector

Note: Make sure that your Fan Power (FANPWR1) jumper setting is correct.

USB Connectors (10-1 pin USB5/6 & USB7/8)

These connectors are for USB 2.0 ports. Connect the USB/GAME module cable to any of these connectors, and then install the module to a slot opening at the back of the system chassis. These USB connectors comply with USB 2.0 specification that supports up to 480 Mbps connection speed.

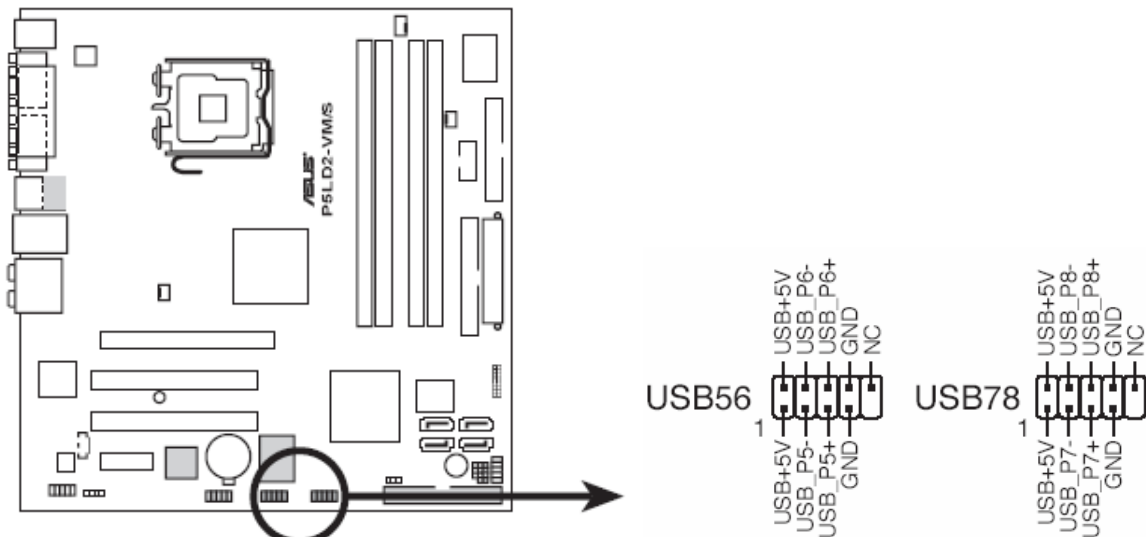


Figure 11: USB Connectors

ATX Power Connectors (24-pin EATXPWR1 & 4-pin ATX12V1)

These connectors are for ATX power supply plugs. The plugs from the power supply are designed to fit these connectors in only one orientation. Find the proper orientation and push down firmly until the connectors completely fit.

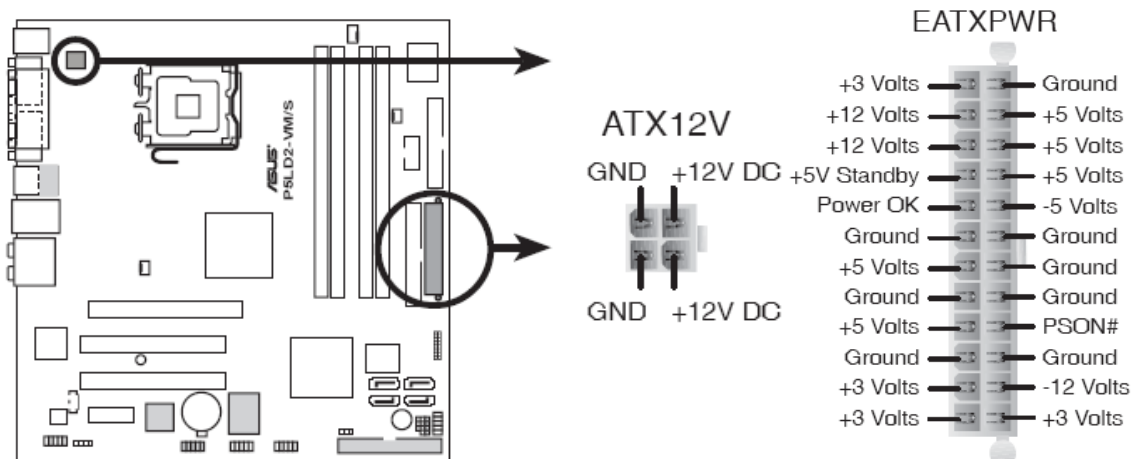


Figure 12: ATX Power Connectors

Note:

- Do not forget to connect the 4-pin ATX +12 V power plug; otherwise, the system will not boot up.
- To power the Motherboard, it is recommended that you use an ATX 12 V Specification 2.0 power supply unit (PSU) with a minimum 350 W power rating. This PSU type has a 24-pin and 4-pin ATX power plugs.
- If you intend to use a PSU with a 20-pin and 4-pin power plugs, make sure that the 20-pin power plug can provide at least 15A on +12 V and that the PSU has a minimum power rating of 350 W. The system may become unstable or may not boot up if the power is inadequate. We do not, however, recommend the use of a 20-pin PSU.
- You must install a PSU with a higher power rating if you intend to install additional devices.

Optical Drive Audio Connector

This connector is for the 4-pin audio cable that connects to the audio connector at the back of the optical drive.

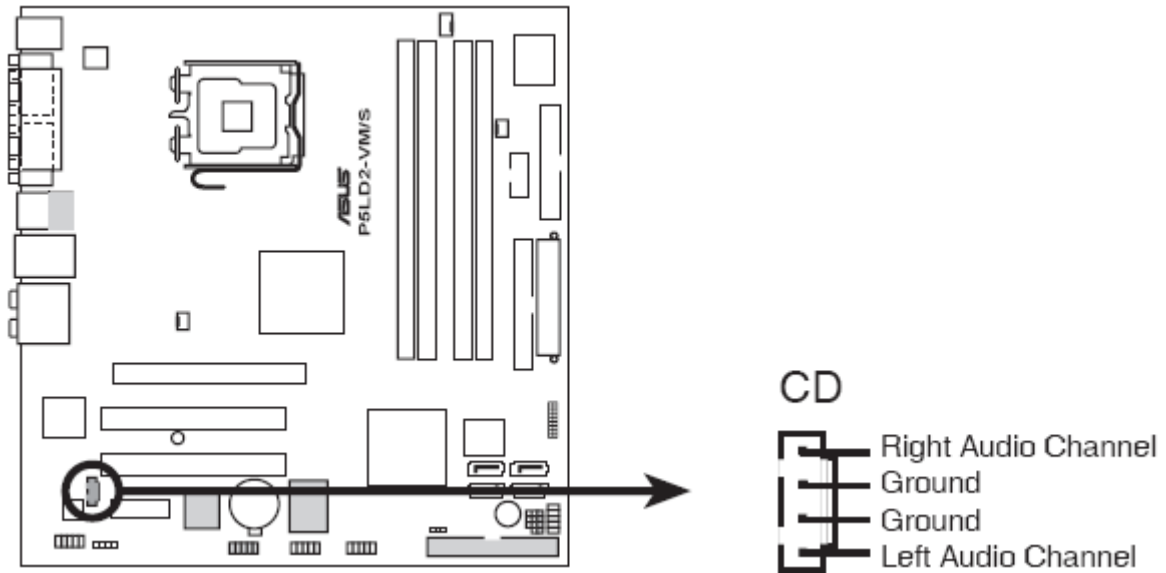


Figure 13: Optical Drive Audio Connector

Note: Enable the CD-IN function in the audio utility when using this connector.

Front Panel Audio Connector (10-1 pin AAFP1)

This connector is for a chassis-mounted front panel audio I/O module that supports either HD Audio or legacy AC'97 audio standard.

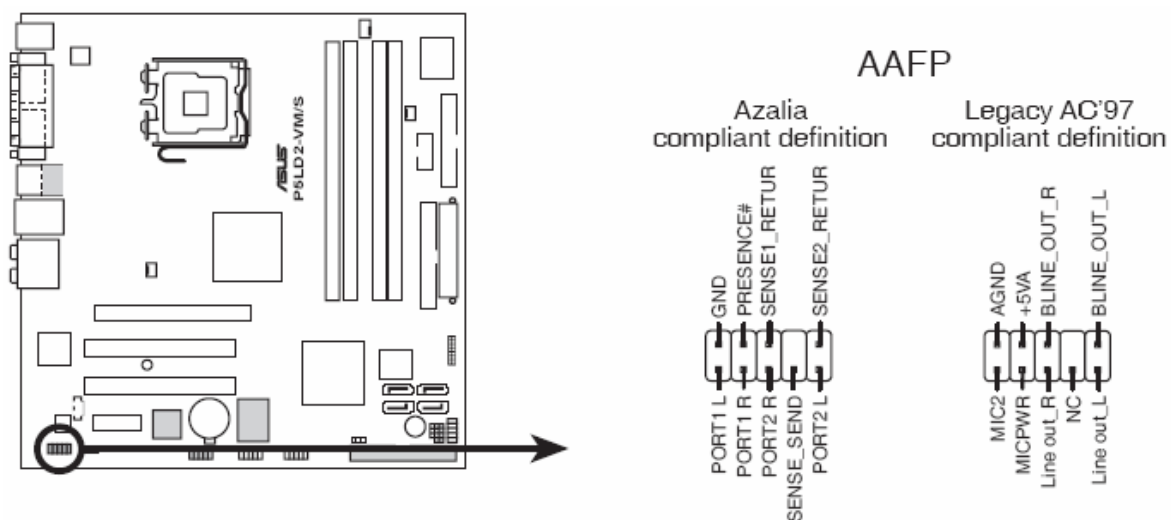


Figure 14: Front Panel Audio Connector

Central Processing Unit (CPU)

The Motherboard comes with a surface mount LGA775 socket designed for the Intel® Core 2 Duo/ Pentium D/ Pentium® 4 processor in the 775-land package

CAUTION!

Allow time for the processor and heat sink to cool before touching either of them.

All Intel® Processors together with Level 2 cache chips are housed in a protective package.

The design of the VIG580S computer makes it a simple job to replace or upgrade the processor. To do so please refer to the follow instructions below:

1. Read the warnings at the start of this chapter and ensure a static free environment
2. Remove the lid from the computer by removing the four screws at the rear of the case
3. Locate the CPU module by referring to Figure 15 if necessary
4. Locate the heat sink clips, and remove heat sink (and unplug FAN cable)
5. Lift arm on Socket to release the CPU
6. Lift the CPU Vertically upwards until it is clear of the socket

You can now fit the replacement CPU and heat sink into the socket.

Installing the CPU

To install a CPU:

1. Locate the CPU socket on the Motherboard.

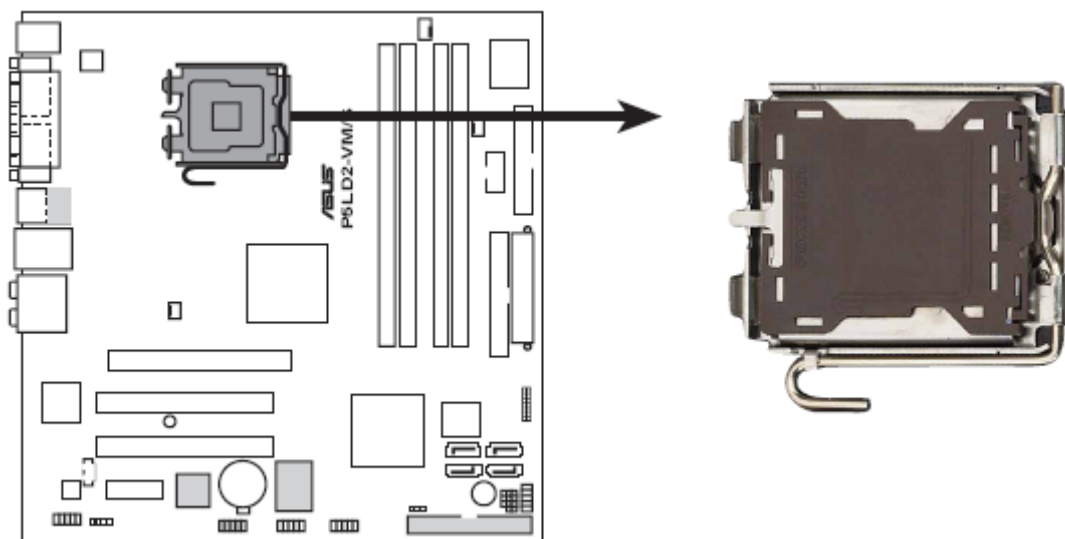


Figure 15: Socket LGA 775

Note: Before installing the CPU, make sure that the cam box is facing towards you and the load lever is on your left.

2. Press the load lever with your thumb (a), then move it to the left (b) until it is released from the retention tab.

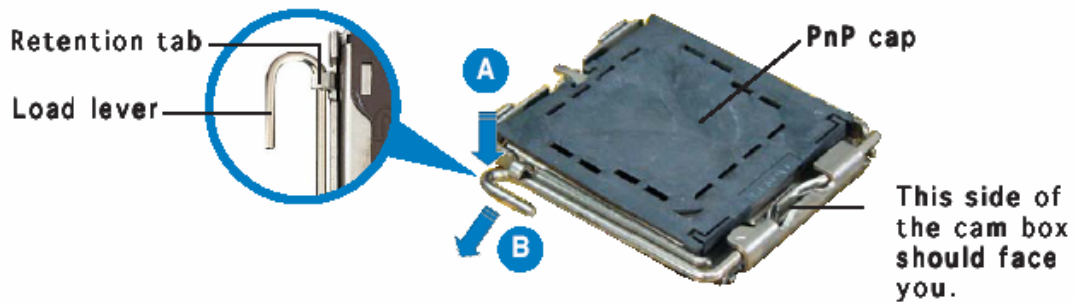


Figure 16: Pressing the Load Lever

CAUTION!

To prevent damage to the socket pins, do not remove the PnP cap unless you are installing a CPU.

3. Lift the load lever in the direction of the arrow to a 135° angle.



Figure 17: Lift the Load Lever

4. Lift the load plate with your thumb and forefinger to a 100° angle (A), then push the PnP cap from the load plate window to remove (B).

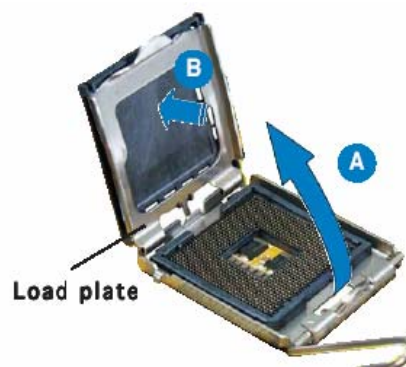


Figure 18: Lifting the Load Plate

5. Position the CPU over the socket, making sure that the gold triangle is on the bottom-left corner of the socket. The socket alignment key should fit into the CPU notch.

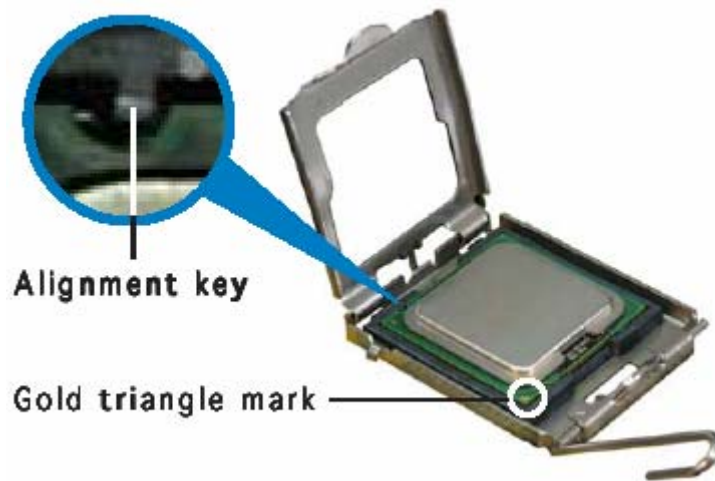


Figure19: Positioning the CPU

6. Close the load plate (A), then push the load lever (B) until it snaps into the retention tab.



Figure 20: Closing the Load Plate

CAUTION!

The CPU fits in only one correct orientation. DO NOT force the CPU into the socket to prevent bending the connectors on the socket and damaging the CPU!

Notes on Intel® Hyper-Threading Technology

- This Motherboard supports Intel® Pentium® 4 CPUs in the 775-land package with Hyper-Threading Technology.
- Hyper-Threading Technology is supported under Windows® XP and Linux 2.4.x (kernel) and later versions only. Under Linux, use the Hyper-Threading compiler to compile the code. If you are using any other operating systems, disable the

Hyper-Threading Technology item in the BIOS to ensure system stability and performance.

- Installing Windows® XP Service Pack 2 is recommended.
- Make sure to enable the Hyper-Threading Technology item in BIOS before installing a supported operating system.
- For more information on Hyper-Threading Technology, visit:

www.intel.com/info/hyperthreading

To use the Hyper-Threading Technology on this Motherboard:

1. Install an Intel® Pentium® 4 CPU that supports Hyper-Threading Technology.
2. Power up the system and enter the BIOS Setup. Under the Advanced Menu, make sure that the item Hyper-Threading Technology is set to Enabled. The item appears only if you installed a CPU that supports Hyper-Threading Technology.
3. Reboot the computer.

Installing the CPU heatsink and Fan

1. Place the heatsink on top of the installed CPU, making sure that the four pins match the holes on the Motherboard.

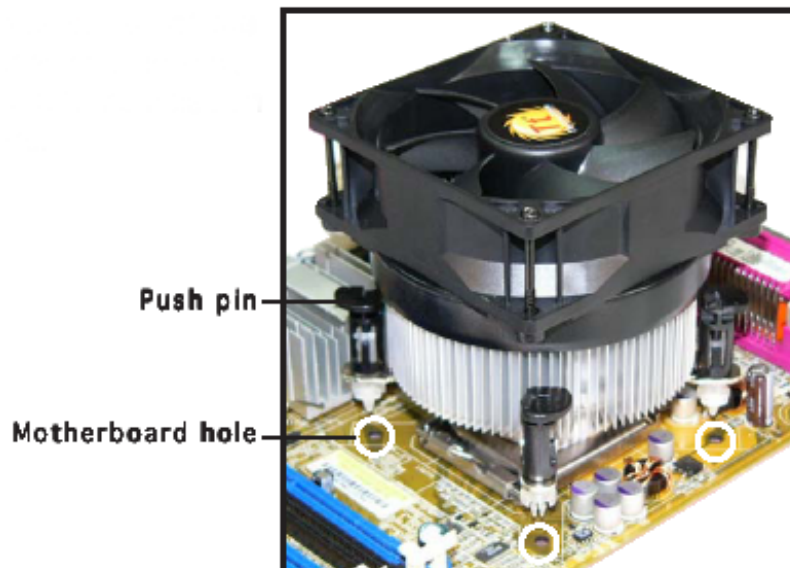


Figure 21: Positioning the Heatsink

2. Push each of the pins downward to secure the heatsink and fan assembly in place.

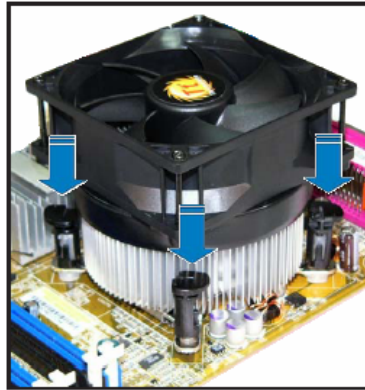


Figure 22: Securing the Heatsink

3. Rotate the push-pins clockwise to unlock the heatsink.



Figure 23: Rotating the Push-Pins

4. When the fan and heatsink assembly is in place, connect the CPU fan cable to the connector on the Motherboard labelled CPU_FAN.

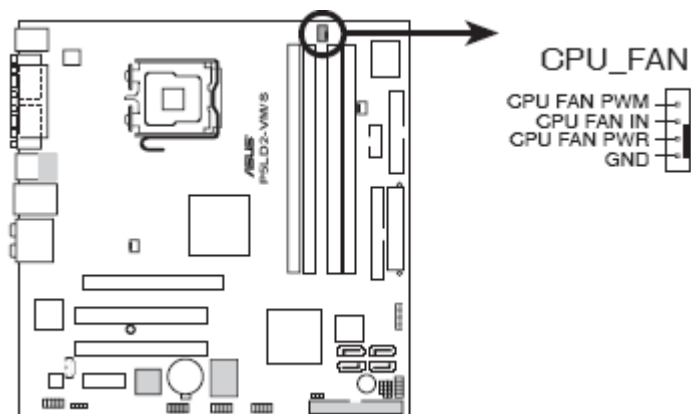


Figure 24: CPU Fan Header

Note: Do not forget to connect the CPU fan connector! Hardware monitoring errors can occur if you fail to plug this connector.

System Memory

The board has four DIMM sockets and support the following memory features:

- 1.8 V DDR2 SDRAM DIMMs with gold-plated contacts
- Unbuffered, single-sided or double-sided DIMMs with the following restriction:
 - Double-sided DIMMS with x16 organisation are not supported.
- 4 GB maximum total system memory total amount of addressable memory.
- Minimum total system memory: 128 MB
- Non-ECC DIMMs
- Serial Presence Detect
- DDR2 400 MHz/ DDR2 533 MHz and DDR2 667 SDRAM DIMMs

Note:

- *Remove the PCI Express x16 video card before installing or upgrading memory to avoid interference with the memory retention mechanism.*
- *To be fully compliant with all applicable DDR2 SDRAM memory specifications, the board should be populated with DIMMs that support the Serial Presence Detect (SPD) data structure. This allows the BIOS to read the SPD data and program the chipset to accurately configure memory settings for optimum performance. If non-SPD memory is installed, the BIOS will attempt to correctly configure the memory settings, but performance and reliability may be impacted or the DIMMs may not function under the determined frequency.*

The following table lists the supported DIMM configurations.

Table 7: Supported DIMM Configurations

| DIMM Capacity | Configurations | SDRAM Density | SDRAM Organisation | No. of SDRAM Devices |
|---------------|----------------|---------------|--------------------|----------------------|
| 128MB | SS | 256Mbit | 16M x 16/empty | 4 |
| 256MB | SS | 256Mbit | 32M x 8/empty | 8 |
| 256MB | SS | 512Mbit | 32M x 16/empty | 4 |
| 512MB | DS | 256Mbit | 32M x 8/32empty | 16 |
| 512MB | SS | 512Mbit | 64M x 8/empty | 8 |
| 512MB | SS | 1Gbit | 64M x 16/empty | 4 |
| 1024MB | DS | 512Mbit | 64M x 8/64 M x 8 | 16 |
| 1024MB | SS | 1Gbit | 128M x 8/empty | 8 |
| 2048MB | DS | 1Gbit | 128M x 8/128 M x 8 | 16 |

Note:

- In the second column, "DS" refers to double-sided memory modules (containing two rows of DDR2 SDRAM) and "SS" refers to single-sided memory modules (containing one row of DDR2 SDRAM).

Memory Configurations

The Intel 82945G GMCH supports two types of memory organisation:

Dual channel (Interleaved) mode

This mode offers the highest throughput for real world applications. Dual channel mode is enabled when the installed memory capacities of both DIMM channels are equal. Technology and device width can vary from one channel to the other but the installed memory capacity for each channel must be equal. If different speed DIMMs are used between channels, the slowest memory timing will be used.

Single channel (Asymmetric) mode

This mode is equivalent to single channel bandwidth operation for real world applications. This mode is used when only a single DIMM is installed or the memory capacities are unequal. Technology and device width can vary from one channel to the other. If different speed DIMMs are used between channels, the slowest memory timing will be used.

Note: The DIMM0 sockets of both channels are Yellow. The DIMM1 sockets of both channels are black.

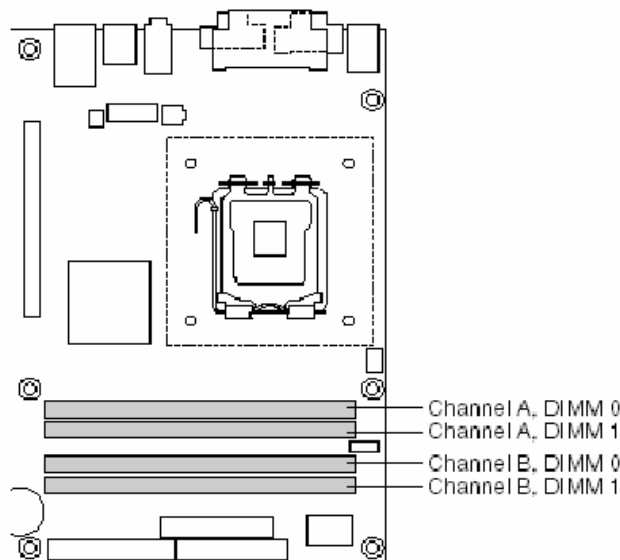


Figure 25: Memory and DIMM Configuration

Dual Channel (Interleaved) Mode Configuration

Figure 26 shows a dual channel configuration using two DIMMs. In this example, the DIMM0 (blue) sockets of both channels are populated with identical DIMMs.



Figure 26: Dual Channel Mode Configuration with Two DIMMs

Figure 27 shows a dual channel configuration using four DIMMs. In this example, the combined capacity of the two DIMMs in Channel A equal the combined capacity of the two DIMMs in Channel B. Also, the DIMMs are matched between DIMM0 and DIMM1 of both channels.



Figure 27: Dual Channel Mode Configuration with Four DIMMs

Single Channel (Asymmetric) Mode Configurations

Dual channel (Interleaved) mode configurations provide the highest memory throughput. Figure 28 shows a single channel configuration using one DIMM. In this example, only the DIMM0 (blue) socket of Channel A is populated. Channel B is not populated.

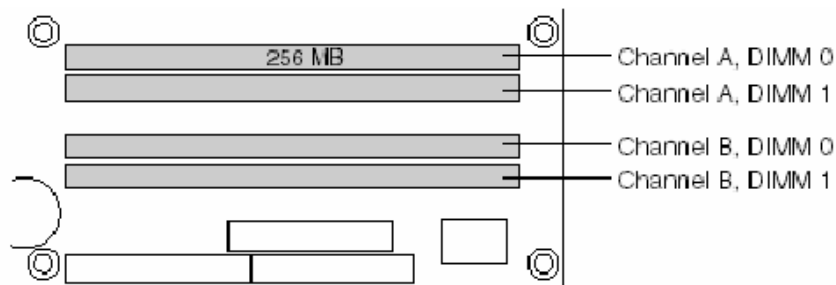


Figure 28: Single Channel Mode Configuration with One DIMM

Installing & Removing DDR2 SDRAM Memory Modules (DIMMs)

Installing Memory

You can install from 128MB to 4GB of memory in the Motherboard DIMM sockets.

The board has four 240-pin DDR2 SDRAM DIMM sockets.

The Motherboard supports the following memory features:

- 240-pin 1.8volt only DIMMs with gold-plated contacts.
- Non-ECC (64-bit).
- 128MB, 256MB, 512MB and 1GB modules.

When adding memory, follow these guidelines:

- a. The BIOS detects the size and type of installed memory.

Note: *DDR2 SDRAM's must meet the JEDEC Solid State Technology Association specifications for DDR2 400/533/667 SDRAM. <http://www.jedec.org/>*

To install DIMMs, follow these steps:

1. Observe the precautions in “Upgrading and ESD precautions”. Turn off the computer and all peripheral devices.
2. Remove the computer cover and locate the DIMM sockets.
3. Holding the DIMM by the edges, remove it from its antistatic package.
4. Make sure the clips at either end of the socket are pushed away from the socket.
5. Position the DIMM above the socket. Align the two small notches in the bottom edge of the DIMM with the keys in the socket. Insert the bottom edge of the DIMM into the socket.
6. When the DIMM is seated, push down on the top edge of the DIMM until the retaining clips at the ends of the socket snap into place. Make sure the clips are firmly in place.
7. Replace the computer cover.

Removing Memory

1. To remove a DIMM, follow these steps:
2. Observe the precautions in “Upgrading and ESD precautions”.
3. Turn off all peripheral devices connected to the computer. Turn off the computer.
4. Remove the computer cover.
5. Gently spread the retaining clips at each end of the socket. The DIMM pops out of the socket. Hold the DIMM by the edges, lift it away from the socket, and store it in an antistatic package.
6. Reinstall and reconnect any parts you removed or disconnected to reach the DIMM sockets.

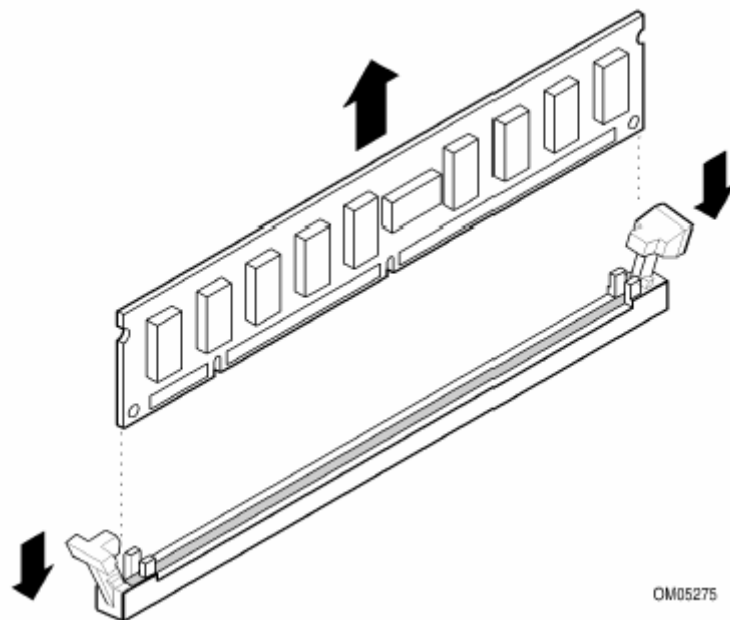


Figure 29: Removing DIMMs

PCI Slots

There are two 32-bit PCI slots on this Motherboard. The slots support PCI cards such as a LAN card, SCSI card, USB card, and other cards that comply with PCI specifications.



Figure 30: Installing a PCI card

PCI Express x16 Slot

This Motherboard supports PCI Express x16 graphic cards that comply with the PCI Express specifications.

Figure 31 shows a graphics card installed on the PCI Express x16 slot.



Figure 31: Install a PCI Express x16 card

PCI Express x1 Slot

This Motherboard supports PCI Express x1 network cards, SCSI cards and other cards that comply with the PCI Express specifications. Figure 32 shows a network card installed on the PCI Express x1 slot.



Figure 32: Install a PCI Express x1 card

Replacing the Clock/CMOS RAM Battery

A lithium battery is installed in a socket on the system board.

The battery has an estimated life expectancy of seven years. When the battery starts to weaken, it loses voltage; when the voltage drops below a certain level, the system settings stored in CMOS RAM (for example, the date and time) may be wrong.

If the battery fails, you will need to replace it with a **CR2032** battery or an equivalent. As long as local ordinance permits, you may dispose of individual batteries as normal rubbish. Do not expose batteries to excessive heat or any naked flame. Keep all batteries away from children.

CAUTION!

Danger of explosion if the battery is incorrectly replaced. Replace only with the same or equivalent type recommended by Viglen. Discard used batteries according to manufacturer's instructions.

The battery is listed as board component 'Y' on the diagram on Figure 33.

To replace the battery, carry out the following:

1. Observe the precautions in "Before You Begin."
2. Turn off all peripheral devices connected to the system.
3. Turn off the system.
4. Remove any components that are blocking access to the battery.
5. Figure 33 shows the battery location. Gently pry the battery free from its socket, taking care to note the "+" and "-" orientation of the battery (Figure 33).
6. Install the new battery in the socket.

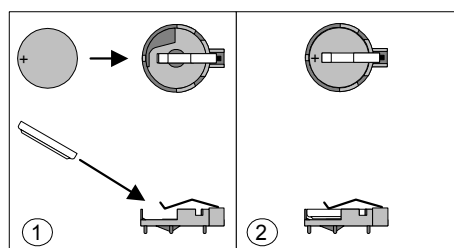


Figure 33: Removing the Battery

Chapter 3: Solving Problems

The first part of this chapter helps you identify and solve problems that might occur when the system is in use. The second part lists error code messages that might be displayed.

Please remember that if you cannot solve the problem by yourself then you should contact Viglen's Technical Support team for further assistance.

Viglen Technical Support can be reached in the following ways:

Telephone: 01727 201 850
Fax: 01727 201 858
Email: techsupport@viglen.co.uk

You can also look for support information on our web site:

<http://www.viglen.co.uk>

Device drivers and various useful utilities can be downloaded from our ftp site:

<ftp://ftp.viglen.co.uk>

Resetting the System

Before checking your system for hardware problems, it is always a good idea to try resetting your computer and see if a re-boot can solve the problem. Most software related problems can be solved simply by re-booting your PC.

Table 8: Resetting the System

| To do the following | Press |
|---|---|
| Soft boot: Clear the system memory and reload the operating system (also called warm reset). | <Ctrl + Alt + Del> |
| Cold boot: Clear the system memory, halt power to all peripherals, restart POST, and reload the operating system. | Power off/on or reset button (at front of the system) |

Troubleshooting Procedures

This section provides a step-by-step troubleshooting procedure to identify a problem and locate its source.

CAUTION!

1. Turn off the system and any peripheral devices before you disconnect any peripheral cables from the system. Otherwise, you can permanently damage the system or the peripheral devices.
2. Make sure the system is plugged into a properly grounded power outlet.
3. Make sure your keyboard and video display are correctly connected to the system. Turn on the video display, and turn up its brightness and contrast controls to at least two-thirds of the maximum (refer to the documentation supplied with the video display).
4. If the operating system normally loads from the hard disk drive, make sure there is no diskette in the diskette drive. If the operating system normally loads from a diskette, insert the operating system diskette into the drive.
5. Turn on the system. If the power indicator does not light, but the system seems to be operating normally, the indicator is probably defective. Monitor the power-on self test (POST) execution. Each time you turn on the system, the POST checks the system board, memory, keyboard, and certain peripheral devices.

Note: If the POST does not detect any errors, the system beeps once and boots up.

Errors that do not prevent the boot process (non-fatal errors) display a message that looks similar to the following:

```
Error Message Line 1
Error Message Line 2
Press <Del > for Set-up
```

Errors that prevent the boot process from continuing (fatal errors), are communicated by a series of audible beeps. If this type of error occurs, refer to the error codes and messages listed at the end of this chapter.

6. Confirm that the operating system has loaded.

Problems Operating Add-in Boards

Problems related to add-in boards are usually related to improper board installation or interrupt and address conflicts. Go through the checklist below to see if you can correct the problem. If the problem persists after you have checked and corrected all of these items, contact the board vendor's customer service representative.

Did you install the add-in board according to the manufacturer's instructions? Check the documentation that came with the board. Are all cables installed properly?

The following items are suggestions for troubleshooting problems related to PCI legacy (non-Plug and Play) add-in boards.

- If the PCI board uses an interrupt, run Set-up and set the interrupt that is being used by the PCI board to Used by PCI Card. Please refer to the BIOS manual for details of how to do this.
- If the PCI legacy board uses memory space between 80000H - 9FFFFH, run Set-up and set conventional memory to 256 K.
- If the PCI legacy board uses shared memory between C8000H - DFFFFH, run Set-up and enable shared memory for the appropriate memory space.

Problems & Suggestions

Table 9: Problems and Suggestions

| What happens | What to do |
|---|---|
| Application software problems | <p>Try resetting the system.</p> <p>Make sure all cables are installed correctly.</p> <p>Verify that the system board jumpers are set properly.</p> <p>Verify that your system hardware configuration is set correctly. In Setup, check the values against the system settings you recorded previously. If an error is evident (wrong type of drive specified, for example), make the change in Setup and reboot the system. Record your change.</p> <p>Make sure the software is properly configured for the system. Refer to the software documentation for information.</p> <p>Try a different copy of the software to see if the problem is with the copy you are using.</p> <p>If other software runs correctly on the system, contact the vendor of the software that fails.</p> <p>If you check all of the above with no success, try clearing CMOS RAM and reconfiguring the system. Make sure you have your list of system settings available to re-enter, because clearing CMOS RAM sets the options to their default values.</p> |
| Characters on-screen are distorted or incorrect | <p>Make sure the brightness and contrast controls are properly adjusted on the monitor.</p> <p>Make sure the video signal cable and power cables are properly installed.</p> <p>Make sure your monitor is compatible with the video mode you have selected.</p> |
| Characters do not appear on screen | <p>Make sure the video display is plugged in and turned on.</p> <p>Check that the brightness and contrast controls are properly adjusted.</p> <p>Check that the video signal cable is properly installed.</p> <p>Make sure a video board is installed, enabled, and the jumpers are positioned correctly.</p> <p>Reboot the system.</p> |
| CMOS RAM settings are wrong | <p>If system settings stored in CMOS RAM change for no apparent reason (for example, the time of day develops an error), the backup battery may no longer have enough power to maintain the settings. Replace the battery (Chapter 2).</p> |
| Diskette drive light does not go on when drive is in use or is tested by POST | <p>Make sure the power and signal cables for the drive are properly installed.</p> <p>Check that the drive is properly configured and enabled in Setup.</p> |

Table 9: Problems and Suggestions (Continued)

| What happens | What to do |
|---|---|
| Hard drive light does not go on when drive is in use or is tested by POST | <p>Make sure the power and signal cables for the drive are properly installed.</p> <p>Make sure the front panel connector is securely attached to the system board headers.</p> <p>Check that the drive is properly configured and enabled in Setup.</p> <p>Check the drive manufacturer's manual for proper configuration for remote hard disk drive activity.</p> |
| Power-on light does not go on | If the system is operating normally, check the connector between the system board and the front panel. If OK, the light may be defective. |
| Prompt doesn't appear after system boots | <p>It's probably switched off.</p> <p>A serious fault may have occurred consult your dealer service department / Technical Support.</p> |
| Setup, can't enter | If you can't enter Setup to make changes, check the switch that disables entry into Setup (Chapter 2). If the switch is set to allow entry into Setup, you might need to clear CMOS RAM to the default values and reconfigure the system in Setup. |
| System halts before completing POST | This indicates a fatal system error that requires immediate service attention. Note the screen display and write down any beep code emitted. Provide this information to your dealer service department / Technical Support. |

Chapter 4: System BIOS

What is the BIOS?

The BIOS (Basic Input Output System) is an important piece of software which is stored in a ROM (Read Only Memory) chip inside the computer. It consists of the basic instructions for controlling the disk drives, hard disk, keyboard and serial/parallel ports. The BIOS also keeps a list of the specifications of the computer in battery-backed RAM (also known as the CMOS RAM) and provides a special Setup program to change this information.

The BIOS in your Viglen computer is guaranteed to be fully compatible with the IBM BIOS. It has been written by American MegaTrends Inc. (AMI), an industry leader in the field of BIOS software.

The Power-On sequence

When the computer is first switched on, certain instructions in the BIOS are executed to test various parts of the machine. This is known as the POST (Power-On Self Test) routine. When you switch the computer on (or when you press the Reset button or press <Ctrl> + <Alt>+ <Delete> keys, which has the same effect), you can see on the monitor that it counts through the memory, testing it. The floppy disk drives are then accessed and tested, and the various interfaces are checked. If there are any errors, a message is displayed on the screen.

Managing and Updating your BIOS

The following utility allows you to manage and update the Motherboard Basic Input/Output System (BIOS) setup.

- ASUS AFUDOS (Updates the BIOS in DOS mode using a bootable floppy disk)

Note: Save a copy of the original Motherboard BIOS file to a bootable floppy disk in case you need to restore the BIOS in the future. Copy the original Motherboard BIOS using the ASUS Update or AFUDOS utilities.

Creating a Bootable Floppy Disk

1. Do either one of the following to create a bootable floppy disk.

DOS environment

- a. Insert a 1.44MB floppy disk into the drive.
- b. At the DOS prompt, type format **A:/S** then press <Enter>.

Windows ® XP environment

- a. Insert a 1.44 MB floppy disk to the floppy disk drive.
- b. Click **Start** from the Windows® desktop, and then select **My Computer**.
- c. Select the 3½ Floppy Drive icon.
- d. Click **File** from the menu, and then select **Format**. A **Format 3½ Floppy Disk** window appears.
- e. Select **Create an MS-DOS start-up disk** from the format options field, and then click **Start**.

Windows ® 2000 environment

To create a set of boot disks for Windows® 2000:

- a. Insert a formatted, high density 1.44 MB floppy disk into the drive.
- b. Insert the Windows® 2000 CD to the optical drive.
- c. Click **Start**, and then select **Run**.
- d. From the Open field, type

D:\bootdisk\makeboot a: (Assuming that d: is your optical drive)

- e. Press <Enter>, then follow screen instructions to continue

2. Copy the original or the latest Motherboard BIOS file to the bootable floppy disk.

AFUDOS Utility

The AFUDOS utility allows you to update the BIOS file in DOS environment using a bootable floppy disk with the updated BIOS file. This utility also allows you to copy

the current BIOS file that you can use as backup when the BIOS fails or gets corrupted during the updating process.

Copying the current BIOS

To copy the current BIOS file using the AFUDOS utility:

Note:

- *Make sure that the floppy disk is not write-protected and has at least 600 KB free space to save the file.*
 - *The succeeding BIOS screens are for reference only. The actual BIOS screen displays may not be exactly the same as shown.*
1. Copy the AFUDOS utility (afudos.exe) from the Motherboard support CD to the bootable floppy disk you created earlier.
 2. Boot the system in DOS mode, then at the prompt type:

afudos /o[filename]

Where the [filename] is any user-assigned filename not more than eight alphanumeric characters for the main filename and three alphanumeric characters for the extension name.



A screenshot of a DOS command prompt showing the command `A:\>afudos /oOLDBIOS1.ROM`. Two blue lines with vertical bars at the end point to the text `OLDBIOS1` and `.ROM` respectively. Below the screenshot, the text "Main filename" is aligned under `OLDBIOS1` and "Extension name" is aligned under `.ROM`.

Figure 34: BIOS Filename

3. Press <Enter>. The utility copies the current BIOS file to the floppy disk.



A screenshot of a DOS command prompt showing the output of the `afudos` command. The text displayed is:
`A:\>afudos /oOLDBIOS1.ROM`
`AMI Firmware Update Utility - Version 1.10`
`Copyright (C) 2002 American Megatrends, Inc. All rights reserved.`
`Reading flash done`
`A:\>`

Figure 35: BIOS Copy Complete

The utility returns to the DOS prompt after copying the current BIOS file.

Updating the BIOS file

To update the BIOS file using the AFUDOS utility:

1. Visit the Viglen FTP site (<ftp://ftp.viglen.co.uk/files>) and download the latest BIOS file for the VIG580S Motherboard. Save the BIOS file to a bootable floppy disk.

Note: Write the BIOS filename on a piece of paper. You need to type the exact BIOS filename at the DOS prompt.

2. Copy the AFUDOS utility (afudos.exe) from the Motherboard support CD to the bootable floppy disk you created earlier.
3. Boot the system in DOS mode, then at the prompt type:

afudos /i(BIOS filename)

Where [filename] is the latest or the original BIOS file on the bootable floppy disk.

```
A:\>afudos /iP5GD1-VM.ROM
```

Figure 36: Typing the BIOS filename

4. The utility verifies the file and starts updating the BIOS.

```
A:\>afudos /iP5GD1-VM.ROM
AMI Firmware Update Utility - Version 1.10
Copyright (C) 2002 American Megatrends, Inc. All rights reserved.
Reading file ..... done
Erasing flash .... done
Writing flash .... 0x0008CC00 (9%)
```

Figure 37: Utility Updating the System BIOS

CAUTION!

Do not shut down or reset the system while updating the BIOS to prevent system boot failure!

5. The utility returns to the DOS prompt after the BIOS update process is completed. Reboot the system from the hard disk drive.

```
A:\>afudos /iP5GD1-VM.ROM
AMI Firmware Update Utility - Version 1.10
Copyright (C) 2002 American Megatrends, Inc. All rights reserved.
Reading file ..... done
Erasing flash .... done
Writing flash .... 0x0008CC00 (9%)
Verifying flash .. done
A:\>
```

Figure 38: BIOS Update Complete

BIOS Setup Program

This Motherboard supports a programmable firmware chip that you can update using the provided utility described above.

Use the BIOS Setup program when you are installing a Motherboard, reconfiguring your system, or prompted to “Run Setup”. This section explains how to configure your system using this utility.

Even if you are not prompted to use the Setup program, you can change the configuration of your computer in the future. For example, you can enable the security password feature or change the power management settings. This requires you to reconfigure your system using the BIOS Setup program so that the computer can recognise these changes and record them in the CMOS RAM of the firmware hub.

The firmware hub on the Motherboard stores the Setup utility. When you start up the computer, the system provides you with the opportunity to run this program. Press during the Power-On-Self-Test (POST) to enter the Setup utility; otherwise, POST continues with its test routines.

If you wish to enter Setup after POST, restart the system by pressing <Ctrl+Alt+Delete>, or by pressing the reset button on the system chassis. You can also restart by turning the system off and then back on. Do this last option only if the first two failed.

The Setup program is designed to make it as easy to use as possible. Being a menu-driven program, it lets you scroll through the various sub-menus and make your selections from the available options using the navigation keys.

Note:

- *The default BIOS settings for this Motherboard apply for most conditions to ensure optimum performance. If the system becomes unstable after changing any BIOS settings, load the default settings to ensure system compatibility and stability. Select the Load Default Settings item under the Exit Menu.*
- *The BIOS setup screens shown in this section are for reference purposes only, and may not exactly match what you see on your screen.*
- *Visit the Viglen FTP site (<ftp://ftp.viglen.co.uk/files>) to download the latest BIOS file for this Motherboard.*

BIOS Menu Screen

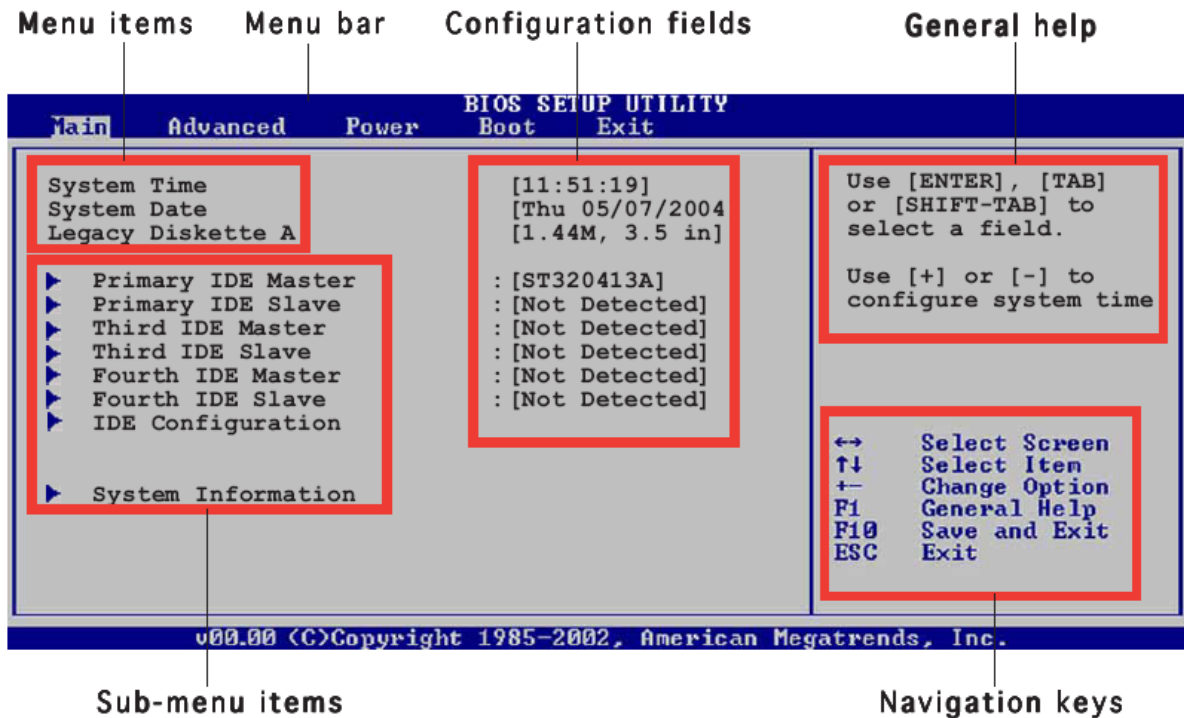


Figure 39: BIOS Screen Layout

Menu Bar

The menu bar on top of the screen has the following main items:

Main: For changing the basic system configuration

Advanced: For changing the advanced system settings

Power: For changing the advanced power management (APM) configuration

Boot: For changing the system boot configuration

Exit: For selecting the exit options and loading default settings

To select an item on the menu bar, press the right or left arrow key on the keyboard until the desired item is highlighted.

Navigation Keys

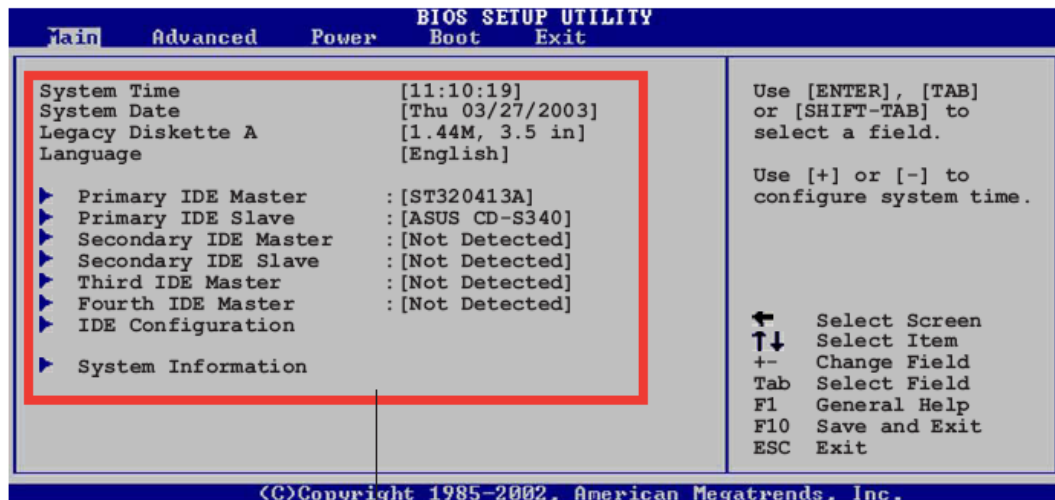
At the bottom right corner of a menu screen are the navigation keys for that particular menu. Use the navigation keys to select items in the menu and change the settings.

Note: Some of the navigation keys differ from one screen to another.

Menu Items

The highlighted item on the menu bar displays the specific items for that menu. For example, selecting Main shows the Main menu items.

The other items (Advanced, Power, Boot, and Exit) on the menu bar have their respective menu items.



Main menu items

Figure 40: Main Menu Items

Sub-menu Items

A solid triangle before each item on any menu screen means that the item has a sub-menu. To display the sub-menu, select the item and press <Enter>.

Configuration Fields

These fields show the values for the menu items. If an item is user configurable, you can change the value of the field opposite the item. You cannot select an item that is not user-configurable.

A configurable field is enclosed in brackets, and is highlighted when selected. To change the value of a field, select it then press <Enter> to display a list of options. Refer to “Pop-up window.”

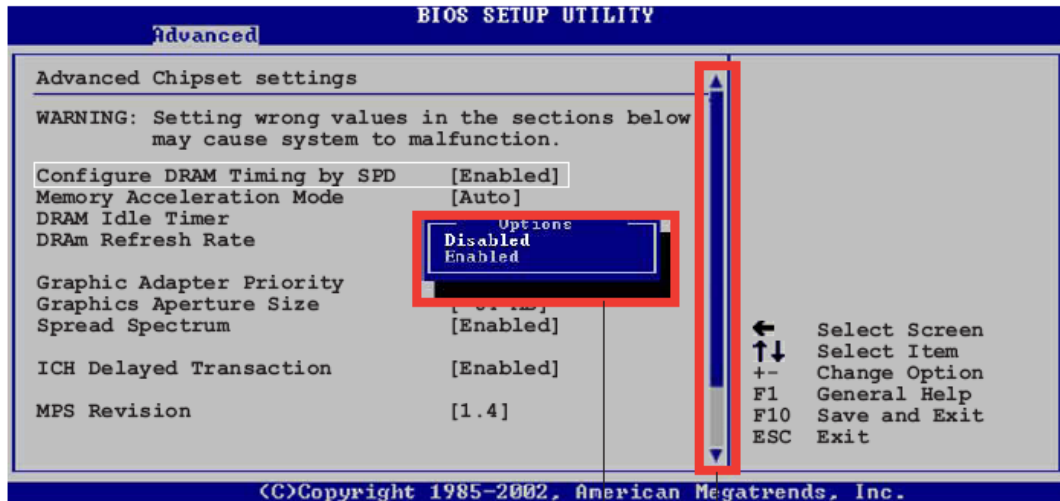
Pop-up Window

Select a menu item then press <Enter> to display a pop-up window with the configuration options for that item.

Scroll Bar

A scroll bar appears on the right side of a menu screen when there are items that do not fit on the screen.

Press the Up/Down arrow keys or <Page Up> / <Page Down> keys to display the other items on the screen.



Pop-up window

Scroll bar

Figure 41: Pop-up Windows and Scroll Bar

General Help

At the top right corner of the menu screen is a brief description of the selected item.

Main Menu

When you enter the BIOS Setup program, the Main menu screen appears, giving you an overview of the basic system information.

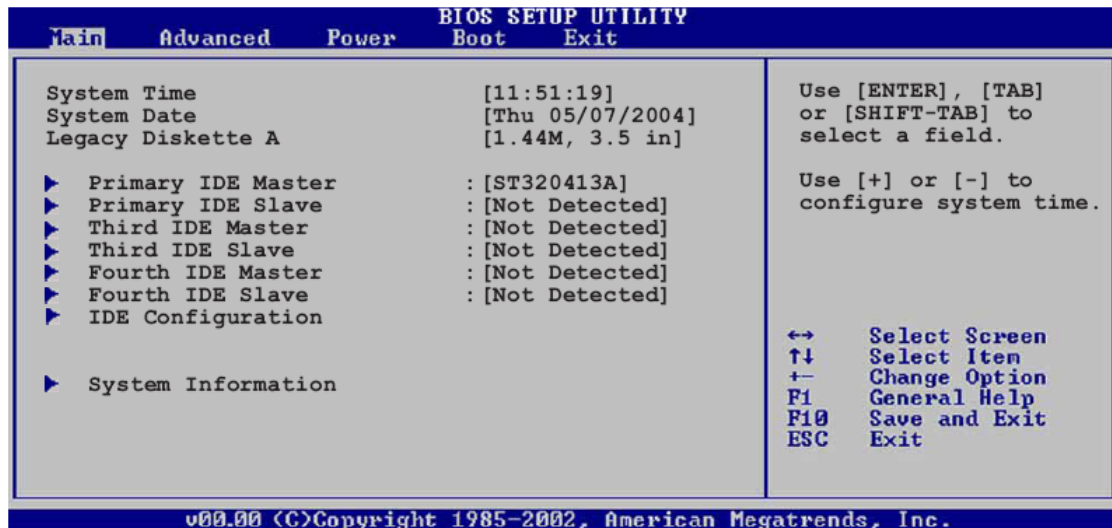


Figure 42: Main Menu

System Time [xx:xx:xxxx]

Allows you to set the system time.

System Date [Day xx/xx/xxxx]

Allows you to set the system date.

Legacy Diskette A [1.44M, 3.5 inch]

Sets the type of floppy drive installed. Configuration options: [Disabled], [360K, 5.25 in.], [1.2M, 5.25 in.], [720K, 3.5 in.], [**1.44M, 3.5 in.**], [2.88M, 3.5 in.]

Primary, Third and Fourth IDE Master/Slave Sub-menu

While entering Setup, the BIOS automatically detects the presence of IDE devices. There is a separate sub-menu for each IDE device. Select a device item then press <Enter> to display the IDE device information.

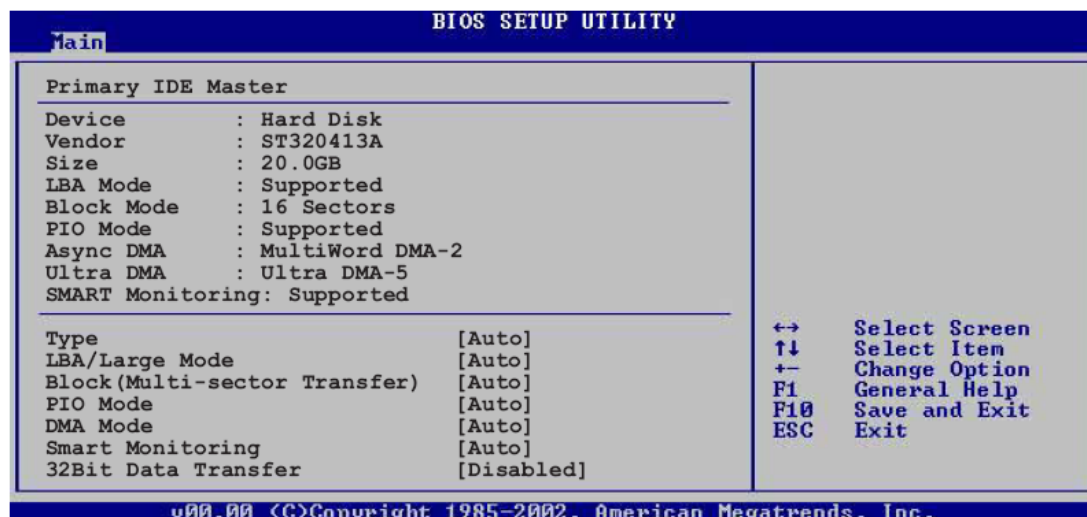


Figure 43: Primary, Third and Forth IDE Master/Slave Sub-menu

The BIOS automatically detects the values opposite the dimmed items (Device, Vendor, Size, LBA Mode, Block Mode, PIO Mode, Async DMA, Ultra DMA, and SMART monitoring). These values are not user-configurable. These items show N/A if no IDE device is installed in the system.

Type [Auto]

Selects the type of IDE drive. Setting to Auto allows automatic selection of the appropriate IDE device type. Select CDROM if you are specifically configuring a CD-ROM drive. Select ARMD (ATAPI Removable Media Device) if your device is either a ZIP, LS-120, or MO drive. Configuration options:

[Not Installed] **[Auto]** [CDROM] [ARMD]

LBA/Large Mode [Auto]

Enables or disables the LBA mode. Setting to Auto enables the LBA mode if the device supports this mode, and if the device was not previously formatted with LBA mode disabled. Configuration options:

[Disabled] **[Auto]**

Block (Multi-sector Transfer) [Auto]

Enables or disables data multi-sectors transfers. When set to Auto, the data transfer from and to the device occurs multiple sectors at a time if the device supports multi-sector transfer feature. When set to [Disabled], the data transfer from and to the device occurs one sector at a time. Configuration options:

[Disabled] **[Auto]**

PIO Mode [Auto]

Selects the PIO mode. Configuration options:

[Auto] [0] [1] [2] [3] [4]

DMA Mode [Auto]

Selects the DMA mode. Configuration options:

[Auto] [SWDMA0] [SWDMA1] [SWDMA2] [MWDMA0] [MWDMA1] [MWDMA2]
[UDMA0] [UDMA1] [UDMA2] [UDMA3] [UDMA4] [UDMA5] [UDMA6]

SMART Monitoring [Auto]

Sets the Smart Monitoring, Analysis, and Reporting Technology. Configuration options:

[Auto] [Disabled] [Enabled]

32-Bit Data Transfer [Disable]

Enables or disables 32-bit data transfer. Configuration options:

[Disabled] [Enabled]

IDE Configuration Sub-menu

The items in this menu allow you to set or change the configurations for the IDE devices installed in the system. Select an item then press <Enter> if you want to configure the item.

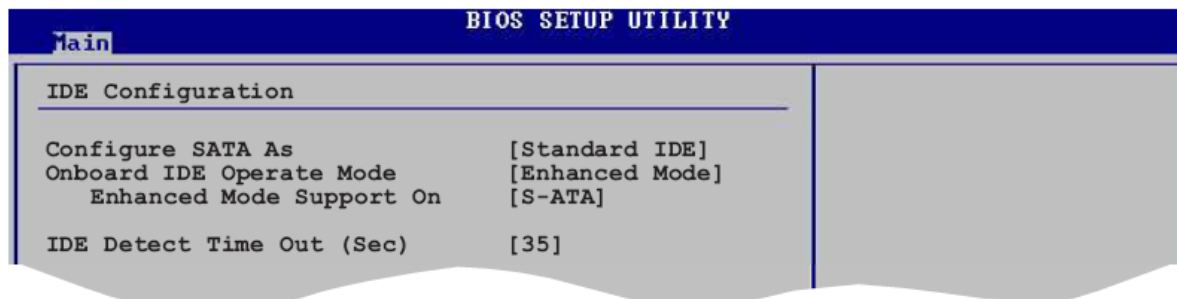


Figure 44: IDE Configuration Sub-menu

Onboard IDE Operate Mode [Enhanced Mode]

Allows selection of the IDE operation mode depending on the operating system (OS) that you installed. Set to Enhanced Mode if you are using native OS, such as Windows® 2000/XP. Configuration options:

[Disabled] [Compatible Mode] **[Enhanced Mode]**

Enhanced Mode Support On [S-ATA Mode]

The default setting SATA allows you to use native OS on Serial ATA and Parallel ATA ports. We recommend that you do not change the default setting for better OS compatibility. In this setting, you may use legacy OS on the Parallel ATA ports only if you did not install any Serial ATA device.

The P-ATA+S-ATA and P-ATA options are for advanced users only. If you set to any of these options and encounter problems, revert to the default setting SATA. Configuration options:

*[S-ATA+P-ATA] **[SATA mode]** [P-ATA]*

IDE Detect Time Out [35]

Selects the time out value for detecting ATA/ATAPI devices. Configuration options:

[0] [5] [10] [15] [20] [25] [30] **[35]**

System Information Sub-menu

This menu gives you an overview of the general system specifications. The BIOS automatically detects the items in this menu.

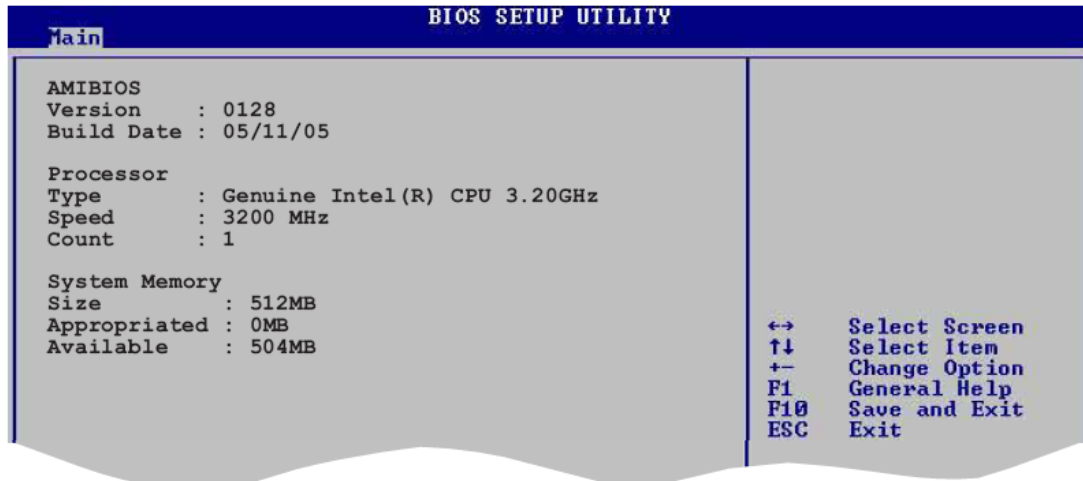


Figure 45: System Information Sub-menu

AMI BIOS

Displays the auto-detected BIOS information.

Processor

Displays the auto-detected CPU specification.

System Memory

Displays the auto-detected system memory.

Advanced Menu

The Advanced menu items allow you to change the settings for the CPU and other system devices.

CAUTION!

Take caution when changing the settings of the Advanced Menu items. Incorrect field values can cause the system to malfunction.

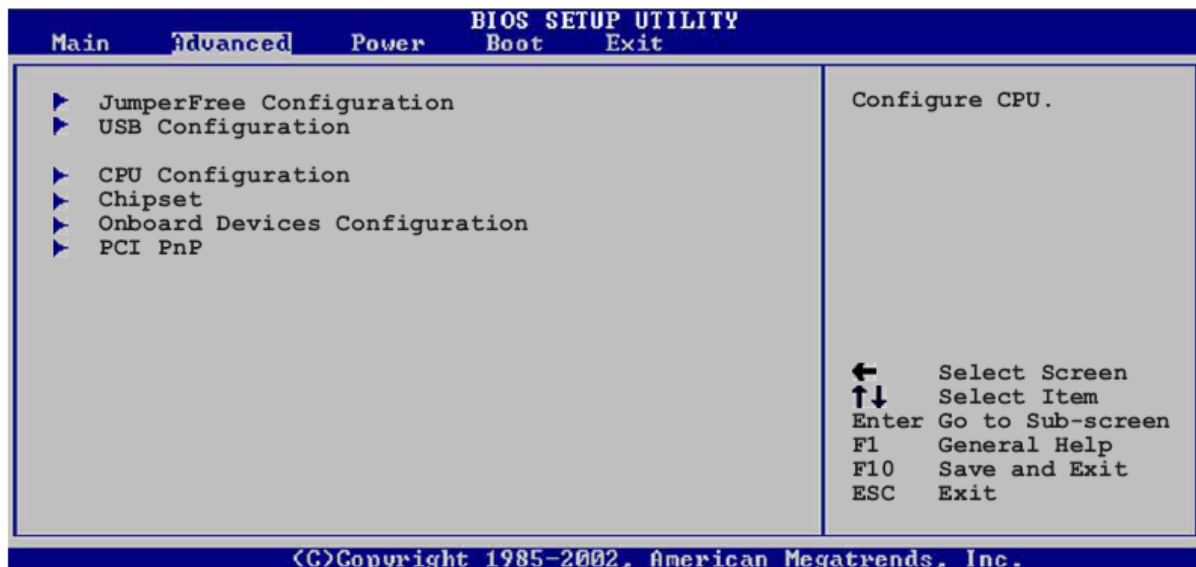


Figure 46: Advanced Menu

JumperFree Configuration Sub-menu

This feature is not supported by Viglen.

USB Configuration Sub-menu

The items in this menu allows you to change the USB-related features. Select an item then press <Enter> to display the configuration options.

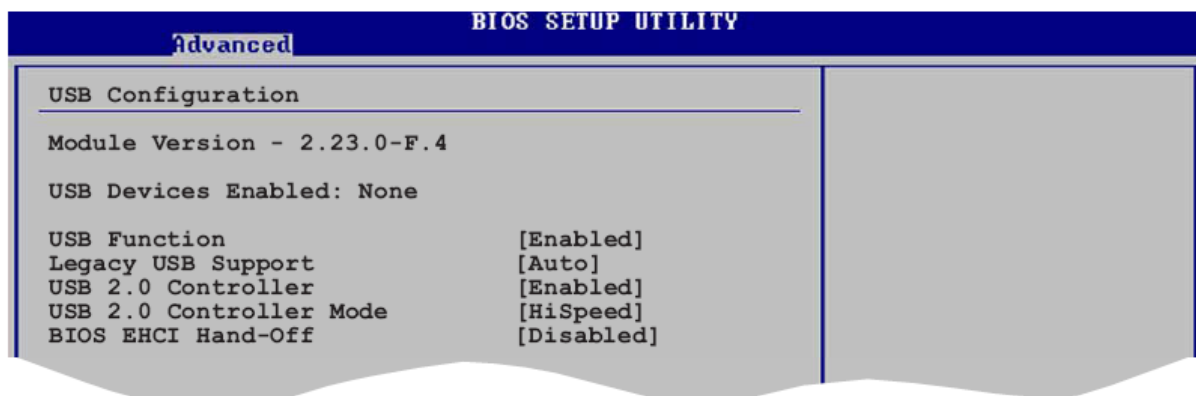


Figure 47: USB Configuration Sub-menu

Note: The Module Version and USB Devices Enabled items show the auto-detected values. If no USB device is detected, the item shows None.

USB Function [Enabled]

Allows you to enable or disable the USB function. Configuration options:

[Disabled] **[Enabled]**

Legacy USB Support [Auto]

Allows you to enable or disable support for USB devices on legacy operating systems (OS). Setting to Auto allows the system to detect the presence of USB devices at start-up. If detected, the USB controller legacy mode is enabled. If no USB device is detected, the legacy USB support is disabled. Configuration options:

[Disabled] [Enabled] **[Auto]**

USB 2.0 Controller [Enabled]

Allows you to enable or disable the USB 2.0 controller. Configuration options:

[Disabled] **[Enabled]**

USB 2.0 Controller Mode [HiSpeed]

Allows you to configure the USB 2.0 controller in HiSpeed (480 Mbps) or Full Speed (12 Mbps). Configuration options:

[HiSpeed] [Full Speed]

CPU Configuration Sub-menu

The items in this menu show the CPU-related information that the BIOS automatically detects.

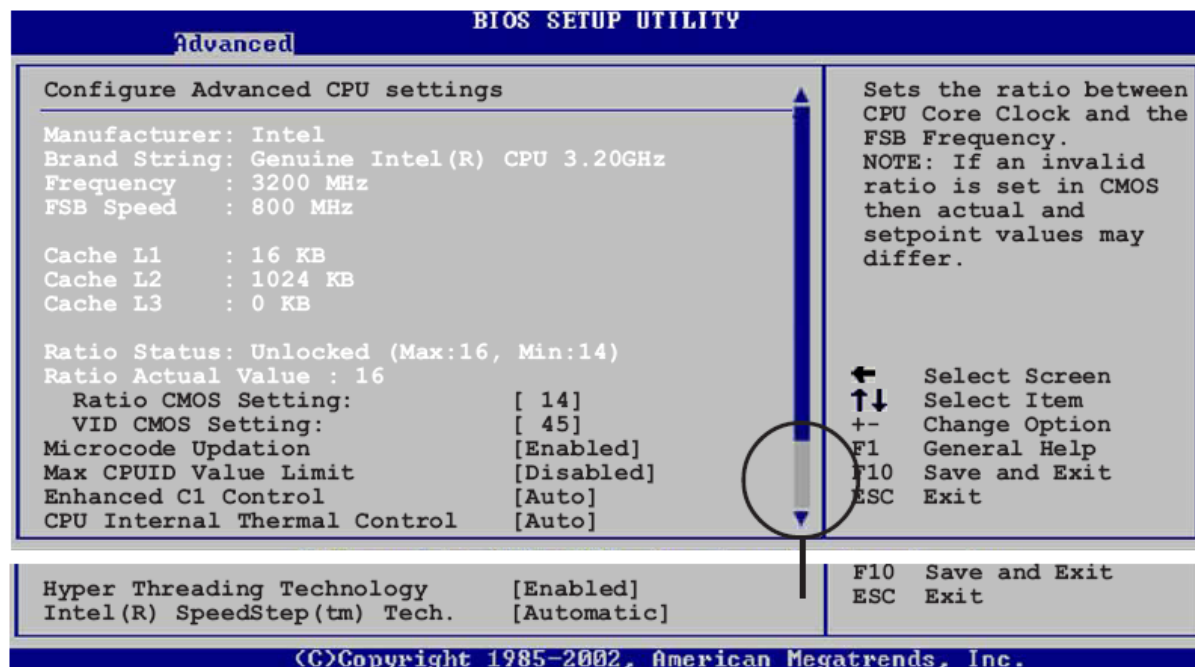


Figure 48: CPU Configuration Sub-menu

Ratio CMOS Setting [8]

Sets the ratio between the CPU Core Clock and the Front Side Bus frequency. The default value of this item is auto-detected by BIOS. Use the <+> or <-> keys to adjust the values.

VID CMOS Setting [62]

Allows you to set the VID CMOS setting at which the processor is to run. The default value of this item is auto-detected by BIOS. Use the <+> or <-> keys to adjust the values.

Microcode Updation [Enabled]

Enables or disables microcode updation. Configuration options:

[Disabled] **[Enabled]**

Max CPUID Value Limit [Disabled]

Enable this item to boot legacy operating systems that cannot support CPUs with extended CPUID functions. Configuration options:

[Disabled] [Enabled]

Enhanced C1 Control [Auto]

When set to [Auto], the BIOS will automatically check the CPU's capability to enable the C1E support. In C1E mode, the CPU power consumption is lower when idle. Configuration options:

[Auto] [Disabled]

CPU Internal Thermal Control [Auto]

Disables or sets the CPU internal thermal control. Configuration options:

[Auto] [Disabled]

Hyper Threading Technology [Enabled]

Enables or disables the processor Hyper-Threading technology. Configuration options:

[Disabled] **[Enabled]**

Intel SpeedStep Technology (Automatic)

Allows you to use the Enhanced Intel SpeedStep Technology. When set to Automatic you can adjust the system power settings in the operating system to use the EIST feature.

[Maximum] [Minimum] **[Automatic]** [Disabled]

Chipset Sub-menu

The Chipset menu allows you to change the advanced chipset settings. Select an item then press <Enter> to display the sub-menu.

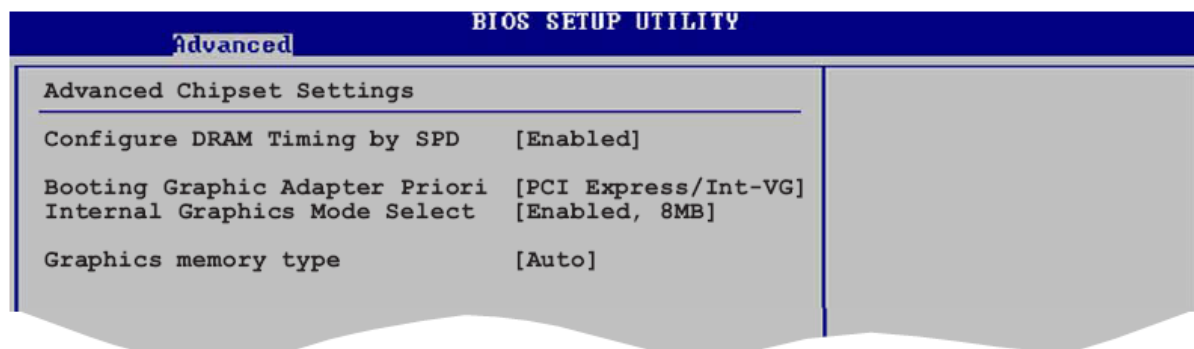


Figure 49: Advanced Chipset Settings Sub-menu

Advanced Chipset Settings

Configure DRAM Timing by SPD [Enabled]

When this item is enabled, the DRAM timing parameters are set according to the DRAM SPD (Serial Presence Detect). When disabled, you can manually set the DRAM timing parameters through the DRAM sub-items. The following sub-items appear when this item is Disabled. Configuration options:

[Disabled] **[Enabled]**

DRAM CAS# Latency [5 Clocks]

Controls the latency between the SDRAM read command and the time the data actually becomes available. Configuration options:

[6 Clocks] **[5 Clocks]** [4 Clocks] [3 Clocks]

DRAM RAS# Precharge [4 Clocks]

Controls the idle clocks after issuing a precharge command to the DDR2 SDRAM. Configuration options:

[2 Clocks] [3 Clocks] **[4 Clocks]** [5 Clocks] [6 Clocks]

DRAM RAS# to CAS# Delay [4 Clocks]

Controls the latency between the DDR2 SDRAM active command and the read/write command. Configuration options:

[2 Clocks] [3 Clocks] **[4 Clocks]** [5 Clocks] [6 Clocks]

DRAM RAS# Activate to Precharge Delay [15 Clocks]

Configuration options:

[1 Clocks] [2 Clocks] ~ **[18 Clocks]**

DRAM Write Recovery Time [4 Clocks]

Sets the DRAM Write Recover Time.

Configuration options:

[2 Clocks] [3 Clocks] **[4 Clocks]** [5 Clocks] [6 Clocks]

Booting Graphic Adapter Priority [PCI/PCI Express]

Allows selection of the graphics controller to use as primary boot device.

Configuration options:

[Internal VGA] **[PCI Express/Int-VGA]** [PCI Express/PCI] [PCI/PCI Express]
[PCI/Int-VGA]

Internal Graphics Mode Select [Enabled, 8MB]

Allows user to select the amount of system memory pre-allocated by the internal graphics device. Configuration options:

[Disabled] [Enabled, 1MB] **[Enabled, 8MB]**

Onboard Devices Configuration Sub-menu

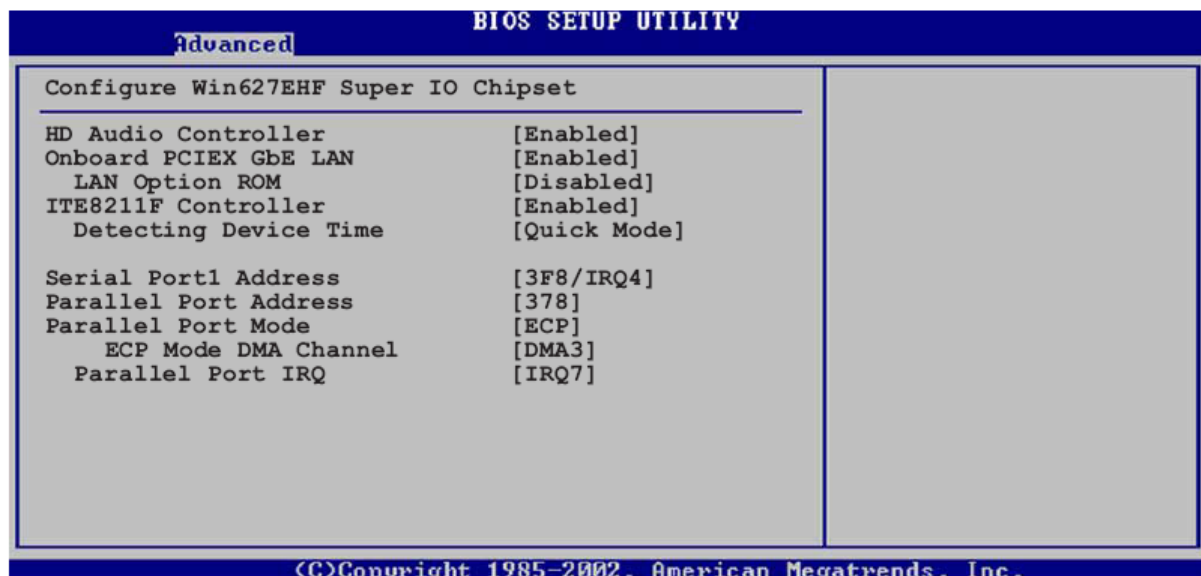


Figure 50: Advanced Chipset Settings Sub-menu

Azalia Controller [Enabled]

Enables or disables the Azalia controller. Configuration options:

[Enabled] [Disabled]

Onboard LAN [Enabled]

Enables or disables the onboard LAN controller. Configuration options:

[Disabled] **[Enabled]**

LAN Boot ROM [Disabled]

Allows you to enable or disable the LAN Boot ROM in the onboard LAN controller. This item appears only when the Onboard LAN item is set to Enabled. Configuration options:

[Disabled] [Enabled]

ITE8211 Controller [Enabled] – *This is not an option Viglen offers*

Detecting Device Time [Quick Mode]

Sets the ITE® 8211F detecting device time. If the devices installed on the IDE connectors cannot be detected, set this item to Standard Mode to enable complete detecting process. This item appears only when the ITE® 8211F Controller is set to [Enabled]. Configuration options:

[Standard Mode] **[Quick Mode]**

Serial Port 1 ADDR2ess [3F8/IRQ4]

Allows you to select the Serial Port1 base aDDR2ess. Configuration options:

[Disabled] **[3F8/IRQ4]** [2F8/IRQ3] [3E8/IRQ4] [2E8/IRQ3]

Parallel Port ADDR2ess [378]

Allows you to select the Parallel Port base aDDR2esses. Configuration options:

[Disabled] **[378]** [278] [3BC]

Parallel Port Mode [ECP]

Allows you to select the Parallel Port mode. Configuration options:

[Normal] [Bi-directional] [EPP] **[ECP]**

ECP Mode DMA Channel [DMA3]

Appears only when the Parallel Port Mode is set to [ECP]. This item allows you to set the Parallel Port ECP DMA. Configuration options:

[DMA0] [DMA1] **[DMA3]**

EPP Version [1.9]

Allows selection of the Parallel Port EPP version. This item appears only when the Parallel Port Mode is set to EPP. Configuration options:

[1.9] [1.7]

Parallel Port IRQ [IRQ7]

Allows selection of the Parallel Port IRQ. Configuration options:

[IRQ5] **[IRQ7]**

PCI PnP Sub-menu

The PCI PnP menu items allow you to change the advanced settings for PCI/PnP devices. The menu includes setting IRQ and DMA channel resources for either PCI/PnP or legacy ISA devices, and setting the memory size block for legacy ISA devices.

CAUTION!

Take caution when changing the settings of the PCI PnP menu items. Incorrect field values can cause the system to malfunction.

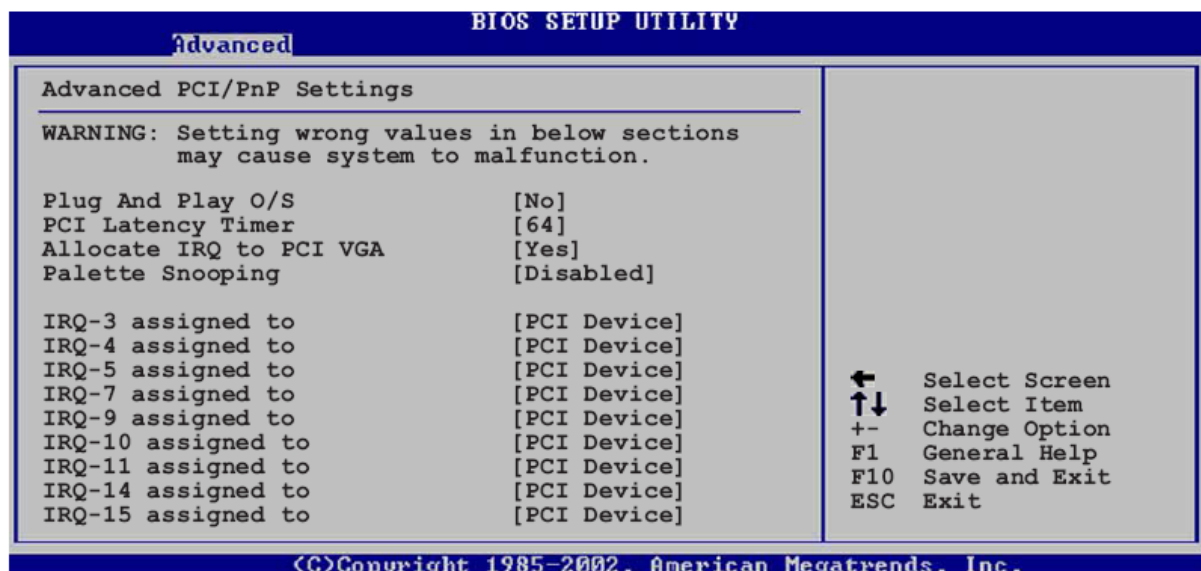


Figure 51: PCI PnP Sub-menu

Plug and Play O/S [No]

When set to [No], BIOS configures all the devices in the system. When set to [Yes] and if you install a Plug and Play operating system, the operating system configures the Plug and Play devices not required for boot. Configuration options:

[No] [Yes]

PCA Latency Timer [64]

Allows you to select the value in units of PCI clocks for the PCI device latency timer register. Configuration options:

[32] **[64]** [96] [128] [160] [192] [224] [248]

Allocate IRQ to PCI VGA [Yes]

When set to [Yes], BIOS assigns an IRQ to PCI VGA card if the card requests for an IRQ. When set to [No], BIOS does not assign an IRQ to the PCI VGA card even if requested. Configuration options:

[No] **[Yes]**

Palette Snooping [Disabled]

When set to [Enabled], the palette snooping feature informs the PCI devices that an ISA graphics device is installed in the system so that the latter can function correctly. Configuration options:

[Disabled] [Enabled]

IRQ-xx Assigned to [PCI Device]

When set to [PCI Device], the specific IRQ is free for use of PCI/PnP devices. When set to [Reserved], the IRQ is reserved for legacy ISA devices. Configuration options:

[PCI Device] [Reserved]

Power Menu

The Power menu items allow you to change the settings for the Advanced Power Management (APM) and Advanced Configuration and Power Interface (ACPI). Select an item then press <Enter> to display the configuration options.

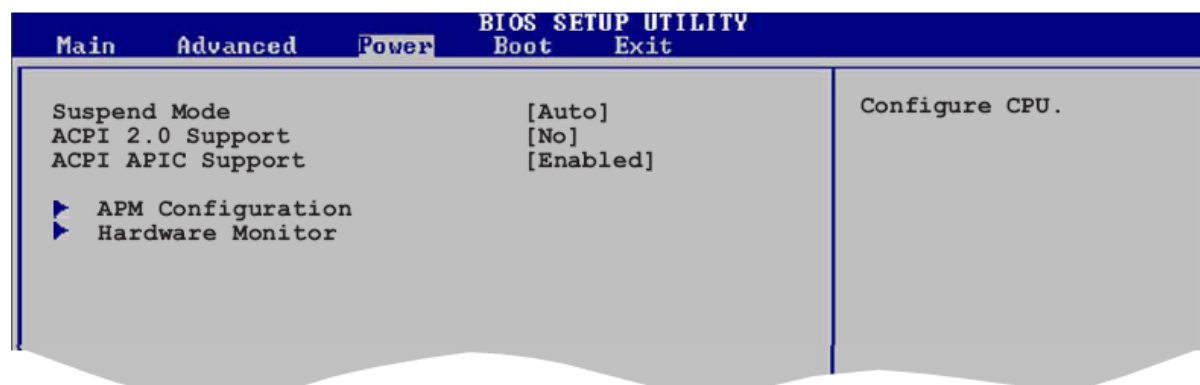


Figure 52: Power Menu

Suspend Mode [Auto]

Allows you to select the Advanced Configuration and Power Interface (ACPI) state to be used for system suspend. Configuration options:

[S1 (POS) Only] [S3 Only] **[Auto]**

Repost Video on S3 Resume [No]

Determines whether to invoke VGA BIOS post on S3/STR resume. Configuration options:

[No] [Yes]

ACPI 2.0 Support [No]

Allows you to add more tables for Advanced Configuration and Power Interface (ACPI) 2.0 specifications. Configuration options:

[No] [Yes]

ACPI APIC Support [Enabled]

Allows you to enable or disable the Advanced Configuration and Power Interface (ACPI) support in the Application-Specific Integrated Circuit (ASIC). When set to Enabled, the ACPI APIC table pointer is included in the RSDT pointer list. Configuration options:

[Disabled] **[Enabled]**

APM Configuration Sub-menu

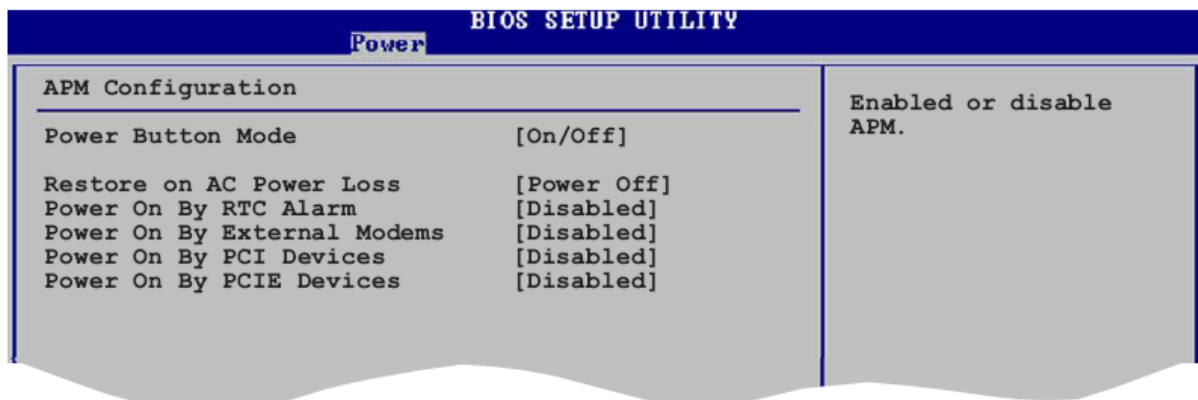


Figure 53: APM Configuration Sub-menu

Restore on AC Power Loss [Power Off]

When set to Power Off, the system goes into off state after an AC power loss. When set to Power On, the system goes on after an AC power loss. When set to Last State, the system goes into either off or on state, whatever the system state was before the AC power loss. Configuration options:

[Power Off] [Power On] [Last State]

Power On By Alarm [Disabled]

Allows you to enable or disable RTC to generate a wake event. When this item is set to Enabled, the items RTC Alarm Date, RTC Alarm Hour, RTC Alarm Minute, and RTC Alarm Second appear with set values. Configuration options:

[Disabled] [Enabled]

Power On By External Modems [Disabled]

This allows either settings of [Enabled] or [Disabled] for powering up the computer when the external modem receives a call while the computer is in Soft-off mode. Configuration options:

[Disabled] [Enabled]

Note: The computer cannot receive or transmit data until the computer and applications are fully running. Thus, connection cannot be made on the first try. Turning an external modem off and then back on while the computer is off causes an initialisation string that turns the system power on.

Power On By PCI Devices [Disabled]

When set to [Enabled], this parameter allows you to turn on the system through a PCI LAN or modem card. This feature requires an ATX power supply that provides at least 1A on the +5VSB lead. Configuration options:

[Disabled] [Enabled]

Power On By PS/2 Keyboard [Disabled]

Allows you to use specific keys on the keyboard to turn on the system. This feature requires an ATX power supply that provides at least 1A on the +5VSB lead. Configuration options:

[Disabled] [Enabled]

Keyboard Wakeup Password

This item appears only when the Power On By PS/2 Keyboard is set to Enabled. Select this item to set or change the keyboard wakeup password. The **Keyboard Wakeup Password** item that appears below shows the default **Not Installed**. After you have set a password, this item shows Installed **Installed**.

Power On By PS/2 Mouse [Disabled]

When set to [Enabled], this parameter allows you to use the PS/2 mouse to turn on the system. This feature requires an ATX power supply that provides at least 1A on the +5VSB lead. Configuration options:

[Disabled] [Enabled]

Hardware Monitoring Sub-menu

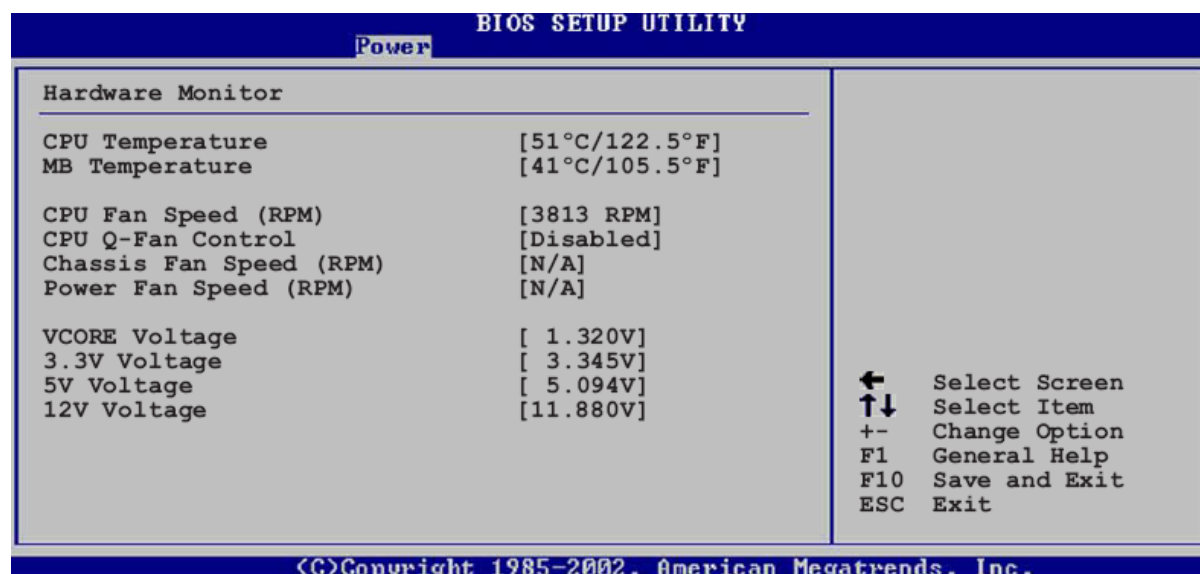


Figure 54: Hardware Monitoring Sub-menu

CPU Temperature [xxx°C/xxx°F] / MB Temperature [xxx°C/xxx°F]

The onboard hardware monitor automatically detects and displays the Motherboard and CPU temperatures. Select Disabled if you do not wish to display the detected temperatures.

CPU Fan Speed [xxxxRPM] or [N/A]

The onboard hardware monitor automatically detects and displays the CPU fan speed in rotations per minute (RPM). If the fan is not connected to the Motherboard, the field shows N/A.

CPU Q-Fan Control [Enabled]

Allows you to enable or disable the ASUS Q-Fan feature that smartly adjusts the fan speeds for more efficient system operation. When this field is set to [Enabled], the CPU Fan Ratio item appears to allow selection of the appropriate fan speed ratio. Configuration options:

[Disabled] **[Enabled]**

Chassis Fan Speed [xxxxRPM] or [N/A]

The onboard hardware monitor automatically detects and displays the chassis fan speed in rotations per minute (RPM). If the fan is not connected to the chassis, the specific field shows N/A.

VCORE Voltage, 3.3V Voltage, 5V Voltage, 12V Voltage

The onboard hardware monitor automatically detects the voltage output through the onboard voltage regulators.

Boot Menu

The Boot menu items allow you to change the system boot options. Select an item then press <Enter> to display the sub-menu.

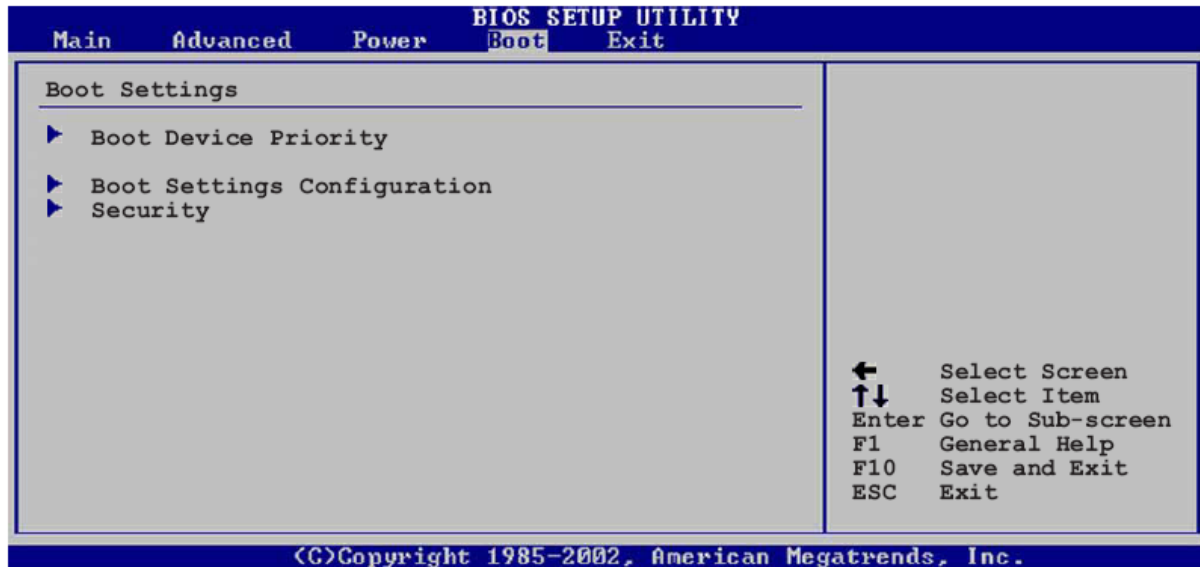


Figure 55: Boot Menu

Boot Device Priority Sub-menu

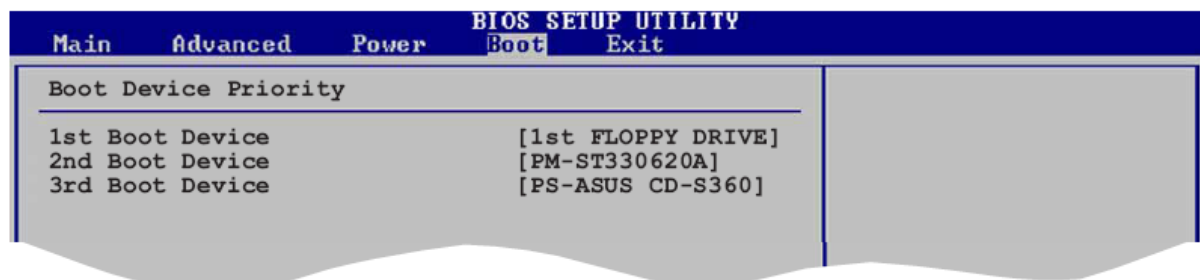


Figure 56: Boot Device Priority Sub-menu

1st ~ xxth Boot Device [1st Floppy Drive]

These items specify the boot device priority sequence from the available devices. The number of device items that appears on the screen depends on the number of devices installed in the system. Configuration options:

[xxxxx Drive] [Disabled]

Boot Settings Configuration Sub-menu

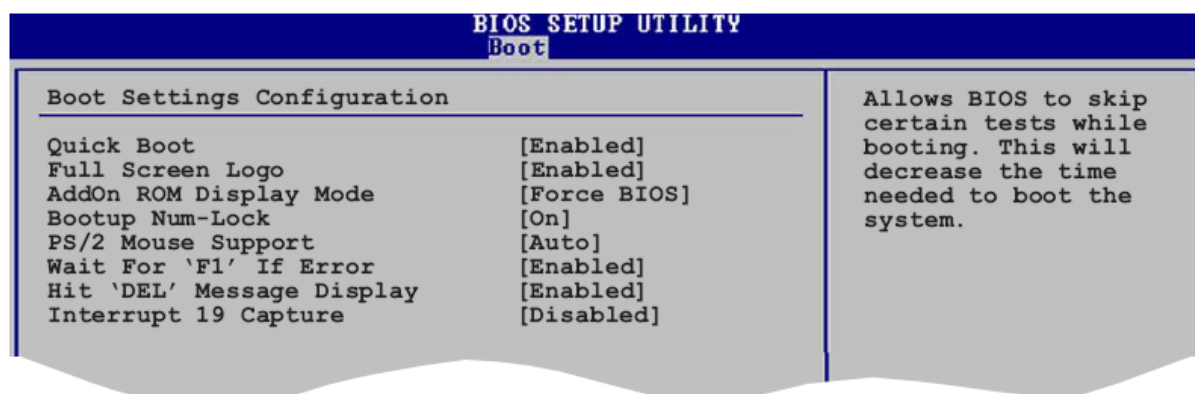


Figure 57: Boot Setting Configuration Sub-menu

Quick Boot [Enabled]

Enabling this item allows the BIOS to skip some power on self tests (POST) while booting to decrease the time needed to boot the system. When set to [Disabled], BIOS performs all the POST items. Configuration options:

[Disabled] **[Enabled]**

Full Screen Logo [Enabled]

This allows you to enable or disable the full screen logo display feature. Configuration options:

[Disabled] **[Enabled]**

Note: Set this item to [Enabled] to use the MyLogo™ feature.

Add On ROM Display Mode [Force BIOS]

Sets the display mode for option ROM. Configuration options:

[Force BIOS] [Keep Current]

Bootup Num-Lock [On]

Allows you to select the power-on state for the NumLock. Configuration options:

[Off] **[On]**

PS/2 Mouse Support [Auto]

Allows you to enable or disable support for PS/2 mouse. Configuration options:

[Disabled] [Enabled] **[Auto]**

Wait for 'F1' If Error [Enabled]

When set to Enabled, the system waits for the F1 key to be pressed when error occurs. Configuration options:

[Disabled] **[Enabled]**

Hit 'DEL' Message Display [Enabled]

When set to Enabled, the system displays the message "Press DEL to run Setup" during POST. Configuration options:

[Disabled] **[Enabled]**

Interrupt 19 Capture [Disabled]

When set to [Enabled], this function allows the option ROMs to trap Interrupt 19. Configuration options:

[Disabled] [Enabled]

Security Sub-menu

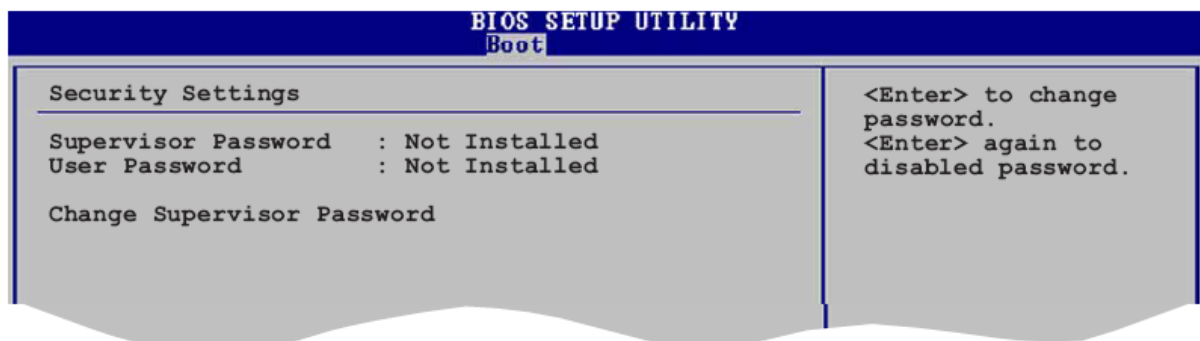


Figure 58: Security Sub-menu

Change Supervisor Password

Select this item to set or change the supervisor password. The Supervisor Password item on top of the screen shows the default **Not Installed**. After you set a password, this item shows **Installed**.

To set a Supervisor Password:

1. Select the Change Supervisor Password item and press <Enter>.
2. From the password box, type a password composed of at least six letters and/or numbers then press <Enter>.
3. Confirm the password when prompted.

The message “Password Installed” appears after you successfully set your password.

To change the supervisor password, follow the same steps as in setting a user password.

To clear the supervisor password, select the Change Supervisor Password then press <Enter>. The message “Password Uninstalled” appears.

Note: If you forget your BIOS password, you can clear it by erasing the CMOS Real Time Clock (RTC) RAM.

After you have set a supervisor password, the other items appear to allow you to change other security settings.

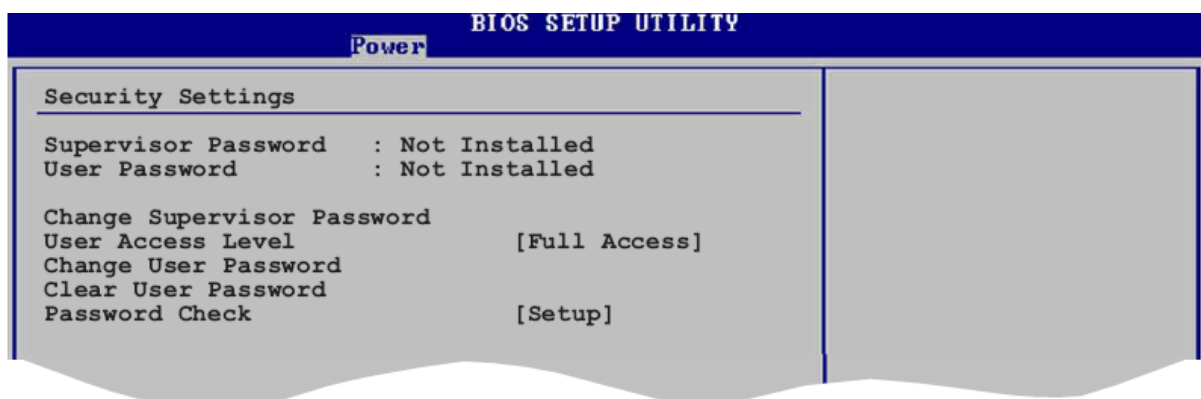


Figure 59: Security Settings Sub-menu

User Access Level (Full Access)

This item allows you to select the access restriction to the Setup items. Configuration options:

[No Access] [View Only] [Limited] **[Full Access]**

No Access prevents user access to the Setup utility.

View Only allows access but does not allow change to any field.

Limited allows changes only to selected fields, such as Date and Time.

Full Access allows viewing and changing all the fields in the Setup utility.

Change User Password

Select this item to set or change the user password. The User Password item on top of the screen shows the default **Not Installed**. After you set a password, this item shows **Installed**.

To set a User Password:

1. Select the Change User Password item and press <Enter>.
2. On the password box that appears, type a password composed of at least six letters and/or numbers, then press <Enter>.
3. Confirm the password when prompted.

The message "Password Installed" appears after you set your password successfully.

To change the user password, follow the same steps as in setting a user password.

Clear User Password

Select this item to clear the user password.

Password Check [Setup]

When set to [Setup], BIOS checks for user password when accessing the Setup utility. When set to [Always], BIOS checks for user password both when accessing Setup and booting the system. Configuration options:

[Setup] [Always]

Boot Sector Virus Protection [Disabled]

Allows you to enable or disable the boot sector virus protection. Configuration options:

[Disabled] [Enabled]

Exit Menu

The Exit menu items allow you to load the optimal or failsafe default values for the BIOS items, and save or discard your changes to the BIOS items.

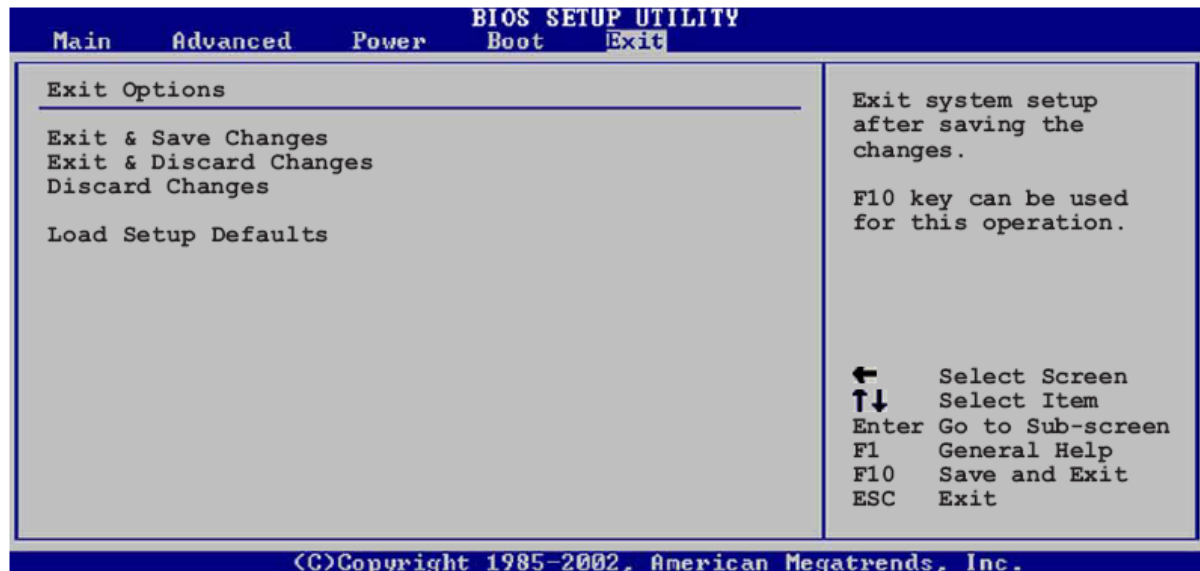


Figure 60: Exit Menu

Note: Pressing <Esc> does not immediately exit this menu. Select one of the options from this menu or <F10> from the legend bar to exit.

Exit and Save Changes

Once you are finished making your selections, choose this option from the Exit menu to ensure the values you selected are saved to the CMOS RAM. An onboard backup battery sustains the CMOS RAM so it stays on even when the PC is turned off. When you select this option, a confirmation window appears. Select Yes Y e s to save changes and exit.

Note: If you attempt to exit the Setup program without saving your changes, the program prompts you with a message asking if you want to save your changes before exiting. Press <Enter> to save the changes while exiting.

Exit and Discard Changes

Select this option only if you do not want to save the changes that you made to the Setup program. If you made changes to fields other than System Date, System Time, and Password, the BIOS asks for a confirmation before exiting.

Discard Changes

This option allows you to discard the selections you made and restore the previously saved values. After selecting this option, a confirmation appears. Select Yes Y e s to discard any changes and load the previously saved values.

Load Setup Defaults

This option allows you to load the default values for each of the parameters on the Setup menus. When you select this option or if you press <F5>, a confirmation window appears. Select Yes Y e s to load default values. Select Exit & Save Changes or make other changes before saving the values to the non-volatile RAM.

Chapter 5: Glossary

Advanced Dynamic Execution

Part of the Pentium® 4 processor's Intel® NetBurst® micro-architecture. Improved branch prediction algorithm accelerates the flow of work to the processor and helps overcome the deeper pipeline. Very deep, out-of-order speculative execution allows the processor to view 126 instructions in flight and handle up to 48 loads and 24 stores in the pipeline. A 4 KB branch target buffer stores more detail on the history of past branches, reducing inaccurate branch predictions by roughly 33% (when compared to P6 micro-architecture).

Advance Transfer Cache (Level 2 Advance Transfer Cache)

The 256 KB Level 2 Advance Transfer Cache (ATC) delivers a much higher data throughput channel between the Level 2 cache and the processor core. 512 KB L2 Advance Transfer Cache is available on 0.13 micron technology Pentium® 4 processors, while 0.18 micron technology Pentium 4 processors utilise a 256 KB L2 Advance Transfer Cache. Features of the ATC include: Non-Blocking, full speed, on-die level 2 cache, 8-way set association, 512-bit or 256-bit data bus to the level 2 cache, data clocked into and out of the cache every clock cycle.

BIOS

(Basic Input Output System) This is software stored on a chip and consists of the instructions necessary for the computer to function. The System BIOS contains the instructions for the keyboard, disk drives etc., and the VGA BIOS controls the VGA graphics card.

CPU

Central Processing Unit. This is the main piece of equipment on the Motherboard. The CPU processes data, tells memory what to store and the video card what to display.

Default

The configuration of the system when it is switched on or the standard settings before any changes are made.

DIMM

Dual In-Line Memory Module, a type of memory module used for the systems main memory.

Driver

A piece of software which is used by application software to control some special features. Each graphics board and printer requires its own driver.

D-Type

A common type of connector used for connecting printers, serial ports, game port, and many other types of interface.

DRAM

Dynamic Ram used for main system memory, providing a moderately fast but cheap storage solution.

Enhanced Floating Point and Multimedia Unit

Part of the Pentium® 4 processor's Intel® NetBurst® micro-architecture. An expanded 128-bit floating point register and an additional register for data movement improves performance on floating-point and multimedia applications.

Execution Trace Cache (Level 1 Execution Trace Cache)

Part of the Pentium® 4 processor's Intel® NetBurst® micro-architecture. In addition to the 8 KB data cache, the Pentium 4 processor includes an Execution Trace Cache that stores up to 12 K decoded micro-ops in the order of program execution. This increases performance by removing the decoder from the main execution loop and makes more efficient usage of the cache storage space since instructions that are branched around are not stored. As a result, a high volume of instructions are delivered to the processor's execution units and the overall time required to recover from erroneous branch predictions is decreased.

FDC

Floppy Disk Controller - the interface for connecting floppy disk drives to the computer.

Hercules

A monochrome graphics video mode which first appeared in the Hercules graphics card. Provides a resolution of 720 by 348 pixels.

Hyper-Pipelined Technology

Part of the Pentium® 4 processor's Intel® NetBurst® micro-architecture. Hyper-pipelined technology doubles the pipeline depth of the Pentium® III processor's P6 micro-architecture, increasing the branch prediction and recovery pipeline to 20 stages. The deeper pipeline enables instructions to be queued and executed at the fastest-possible rate, increasing performance, frequency, and scalability.

IDE

Integrated Drive Electronics - currently the most popular type of interface for hard disk drives. Much of the circuitry previously required on hard disk controller cards is now integrated on the hard disk itself.

Interface

The electronics providing a connection between two pieces of equipment. For example, a printer interface connects a computer to a printer.

Interlace

The mode the graphics card uses to refresh a monitor screen. When the graphics is in interlace mode, the frequency of the display update is lower than in non-interlace mode. This causes a slight flicker, so generally non-interlaced mode is better if the monitor supports it.

Internet Streaming SIMD Extensions

Consists of 70 instructions and includes single instruction, multiple data for floating-point, additional SIMD-integer and cache ability control instructions. Benefits include higher resolution image viewing and manipulation, high quality audio, MPEG2 video, and simultaneous MPEG2 encoding and decoding, reduced CPU utilisation for speech recognition, and higher accuracy and faster response times

L.E.D.

Light Emitting Diode - a light which indicates activity - for example hard disk access.

PCI (Peripheral Component Interconnect)

Developed by Intel, PCI is a local bus standard. A bus is a channel used to transfer data to (input) and from (output) a computer and to or from a peripheral device. Most PCs have a PCI bus usually implemented at 32-bits providing a 33 MHz clock speed with a throughput rate of 133 MBps.

NetBurst® micro-architecture (Intel NetBurst® micro-architecture)

The NetBurst® micro-architecture delivers a number of new and innovative features including Hyper Pipelined Technology, 400 MHz System Bus, Execution Trace Cache, and Rapid Execution Engine. It also delivers a number of enhanced features, including Advanced Transfer Cache, Advanced Dynamic Execution, Enhanced Floating Point and Multimedia Unit, and Streaming SIMD Extensions 2. Intel NetBurst® Microarchitecture provides higher throughput within the processor and out to memory and I/O for improved headroom.

PCI

Peripheral Component Interface. It became apparent to manufacturers that the 8MHz AT ISA BUS on the standard PC was just not fast enough for today's applications, and so PCI was invented. It is a high speed data bus that carries information to and from components - known as 'Local Bus'.

PCI-X

The 64-bit PCI-X interface (PCI-X 1.0a) can be operated at 133 MHz, (or at 100 MHz and 66 MHz) which achieves a greater than two-fold boost in performance over PCI 2.2 bus technology. The 133 MHz PCI-X interface achieves up to 1 GB/s throughput, a two-fold increase over 66 MHz PCI 2.2.

PCI-Express

PCI Express is a 3rd generation I/O architecture where ISA and PCI were respectively the 1st and 2nd generations. A high-speed, general-purpose serial I/O interconnect, PCI Express will initially offers speeds of 2.5 Gigabits per second, support multiple widths ("lanes" of data that range from 1 to 32), and scale to the limits of copper. PCI Express will unify I/O architecture for desktop, mobile, server, communications platforms, workstations and embedded devices while also coexisting with PCI and USB connection types

RAM

Random Access Memory - the memory used by the computer for running programs and storing data.

ROM

Read Only Memory - a memory chip which doesn't lose its data when the system is switched off. It is used to store the System BIOS and VGA BIOS instructions. It is slower than RAM.

Rapid Execution Engine

Part of the Pentium® 4 processor's Intel® NetBurst® micro-architecture. Two Arithmetic Logic Units (ALUs) are clocked at twice the core processor frequency, allowing basic integer instructions such as Add, Subtract, Logical AND, and Logical OR to execute in half of a clock cycle. For example, the Rapid Execution Engine on a 1.50 GHz Pentium 4 processor runs at 3 GHz.

S-ATA (Serial ATA)

Serial ATA is the next-generation internal storage interconnect designed to replace Parallel ATA technology. Serial ATA is the proactive evolution of the ATA interface from a parallel bus to a serial bus architecture. This architecture overcomes many design and usage constraints that are increasing the difficulty of continued speed enhancements for the classic parallel ATA bus. Serial ATA will be introduced at 150Mbytes/sec, with a roadmap already planned through 600Mbytes/sec.

Shadow Memory

The BIOS is normally stored in ROM. On certain systems it can be copied to RAM on power up to make it go faster. This RAM is known as shadow memory. The System BIOS is responsible for this copying.

SSE (Streaming SIMD Extensions)

Internet Streaming SIMD (Single Instruction Multiple Data) Extensions are instructions that reduce the overall number of instructions required to execute a particular program task. As a result, they can boost performance by accelerating a broad range of applications, including video, speech, and image, photo processing, encryption, financial, engineering and scientific applications. NetBurst® micro-architecture adds 144 new SSE instructions, which are known as SSE2.

Streaming SIMD Extensions 3

Better multimedia and encryption/decryption processing than previous generations, along with support for more computationally intensive graphics.

Super VGA

Additional screen modes and capabilities provided over and above the standard VGA defined by IBM.

VGA

Video Graphics Array - the graphics standard defined by IBM and provided on IBM's PS/2 machines.

Chapter 6: Suggestions

Viglen is interested in continuing to improve the quality and information provided in their manuals. Viglen has listed some questions that you may like to answer and return to Viglen. This will help Viglen help to keep and improve the standard of their manuals.

1. Is the information provided in this and other manuals clear enough?

2. What could be added to the manual to improve it?

3. Does the manual go into enough detail?

4. Would you like an on-line version of this manual?

5. How do you rate the Viglen Technical support and Service Departments?

6. Are there any technological improvements that could be made to the system?

7. Other points you would like to mention?

Please return this slip to: Product Development Dept.
 Viglen Ltd
 7 Handley Page Way
 Colney Street
 St Albans
 Hertfordshire
 AL2 2DQ