

Windows 8/8.1 BIOS Setting VIG450J (PMPFS450)

Vig450J system configured with Windows 8.1 will have following default BIOS settings. If you wish to downgrade from Windows 8.1 to Windows 7 or other legacy operating system then BIOS must be configured to Non-UEFI mode.

Windows 8/8.1 UEFI mode BIOS settings.

Secure Boot Control [Enabled]

CSM Parameters

CSM Configuration

Launch CSM	[Enabled]
Boot Option filter	[UEFI Only]
Launch PXE OpROM policy	[UEFI only]
Launch Storage OpROM policy	[UEFI only]
Launch Video OpROM policy	[UEFI OpROM]
Other PCI device ROM priority	[UEFI OpROM]

Windows 7 (Non UEFI Mode) BIOS settings.

Secure Boot Control [Disabled]

CSM Parameters

CSM Configuration

Launch CSM	[Enabled]
Boot Option filter	[UEFI and Legacy]
Launch PXE OpROM policy	[Legacy Only]
Launch Storage OpROM policy	[Legacy Only]
Launch Video OpROM policy	[Legacy Only]
Other PCI device ROM priority	[Legacy OpROM]

To enable downgrade to Windows 7 operating system, BIOS settings must be changed to boot into Legacy BIOS mode (Non UEFI Mode).

Note

Please ensure the changes of the following settings are performed by personnel with some previous experience/knowledge of altering BIOS settings.

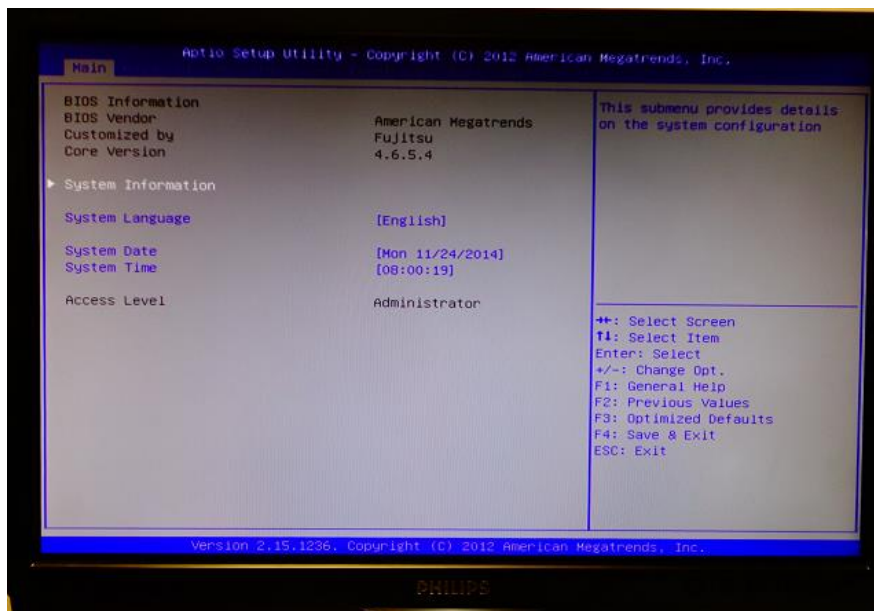


Figure 1- BIOS setup Screen

BIOS Settings for Windows 8/8.1 Operating System (UEFI Mode)

Accessing BIOS Setup

Press the **** key to access BIOS setup during POST checks.

Enabling Windows 8/8.1 Features [UEFI Mode]

1. From the BIOS main menu select **<Security>**
2. Select **<Secure Boot>**

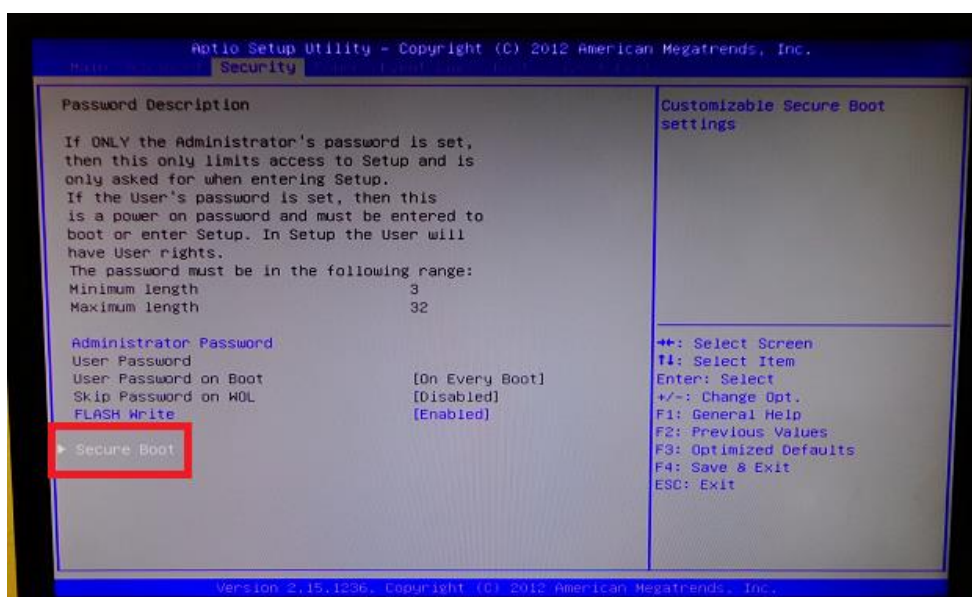


Figure 2 –Secure Boot option

3. On the 'Secure Boot Configuration' menu Enable below settings:

Secure Boot Control [Enabled]

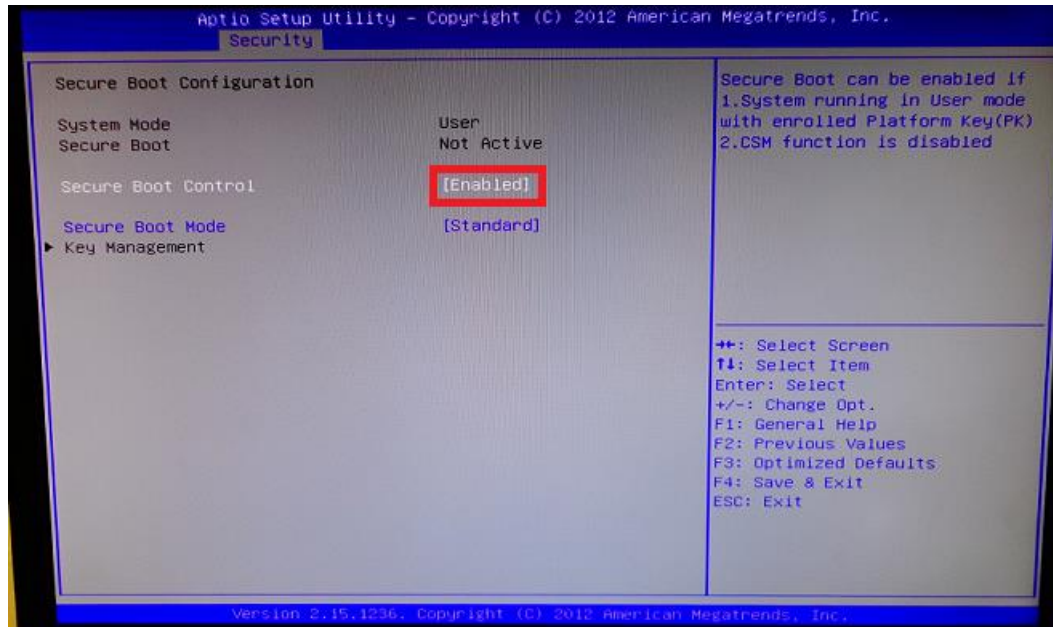


Figure 3 – Secure Boot Configuration

4. From Secure Boot Mode Select [Custom]

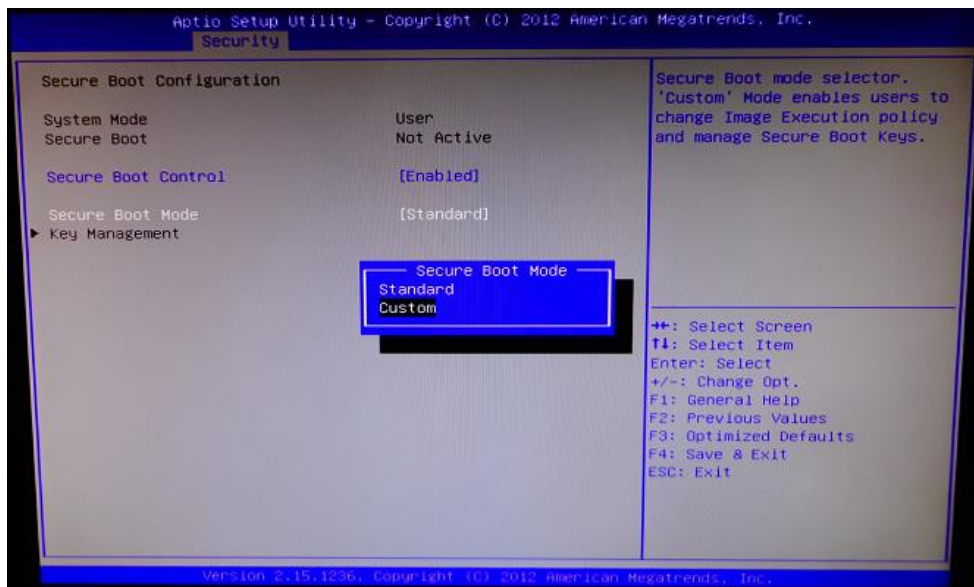


Figure 4 – Secure Boot configuration

5. Enable Factory Default Key Provisioning

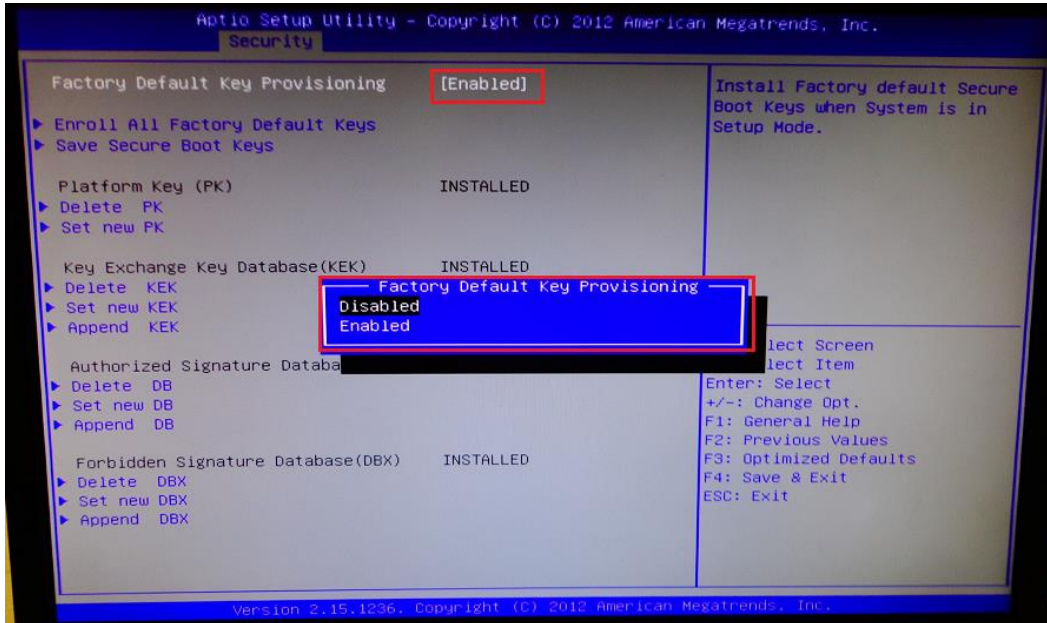


Figure 5 – Secure Boot Default Key Provisioning

6. Select 'Enrol All Factory Default Keys' to install the default keys. Ensure all keys are set to installed

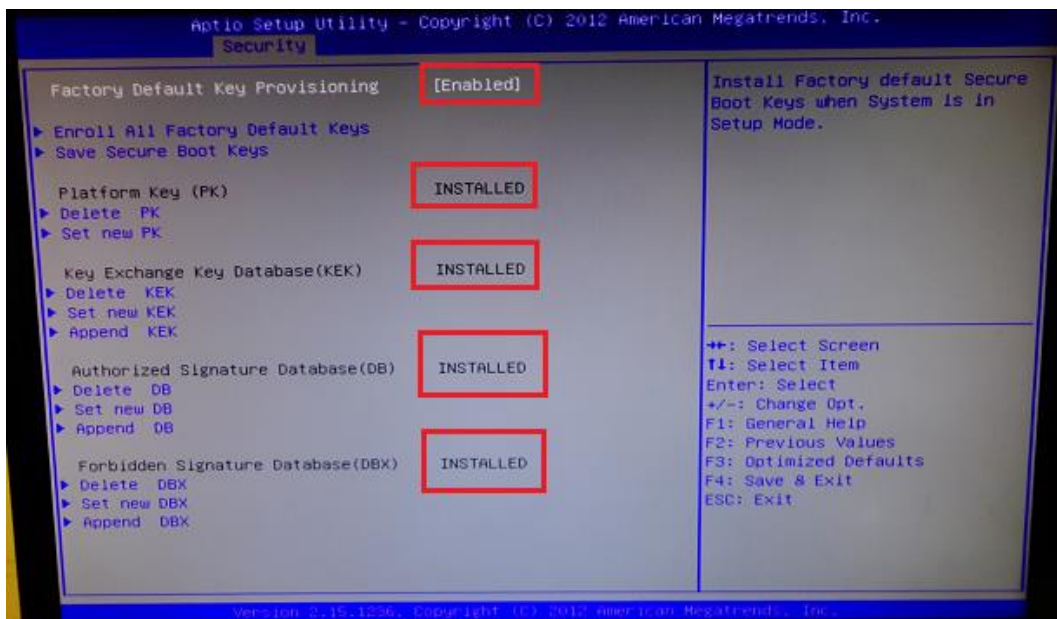


Figure 6 - Secure Boot Default Key Provisioning

- 7. Press Escape to Exit the Secure Boot Default Key Provisioning screen.
- 8. Set the Secure mode to **[Standard]**

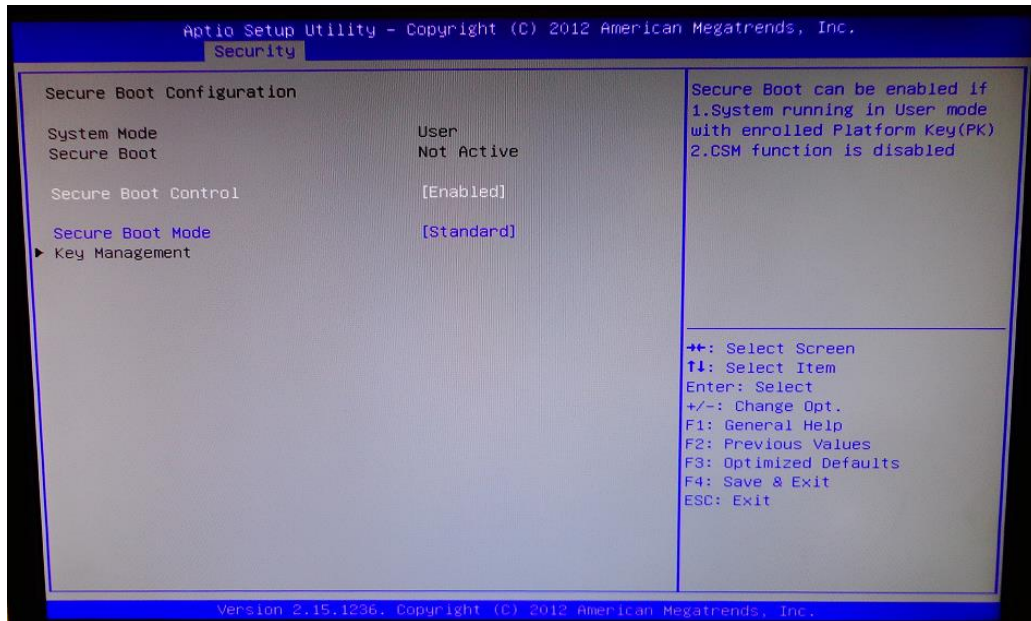


Figure 7 – Final Secure Boot Configuration Settings

Note: When Secure Boot Control is set to **[Enabled]**, CSM Parameters option will not be visible under Boot screen. CSM parameters is available when Secure Boot Control is set to **[Disabled]**

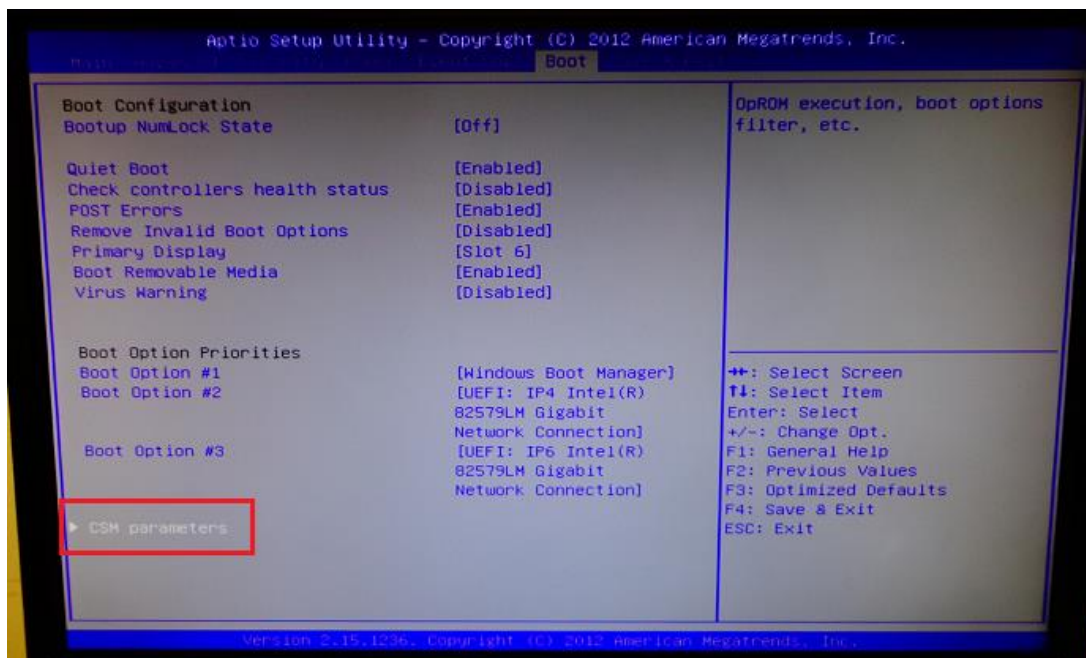


Figure 8 – CSM parameters under Boot screen

For Windows 8/8.1 configuration CSM Parameters are set to following:

CSM Parameters

CSM Configuration

Launch CSM	[Enabled]
Boot Option filter	[UEFI Only]
Launch PXE OpROM policy	[UEFI only]
Launch Storage OpROM policy	[UEFI only]
Launch Video OpROM policy	[UEFI OpROM]
Other PCI device ROM priority	[UEFI OpROM]

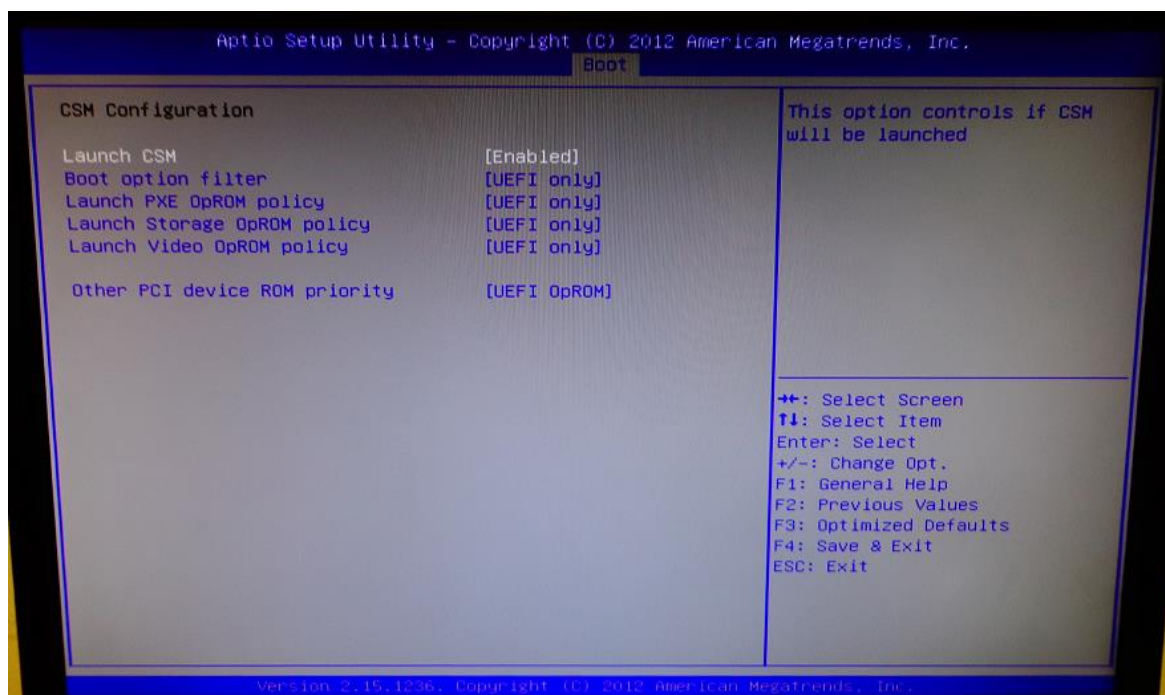


Figure 9 – UEFI CSM Settings

For Windows 7 operating systems Secure Boot Control settings should be set to Disabled.

Disabling Windows 8/8.1 Features [Non UEFI Mode]

Disabling Secure Boot

1. Select 'Secure Boot' from Security Screen.

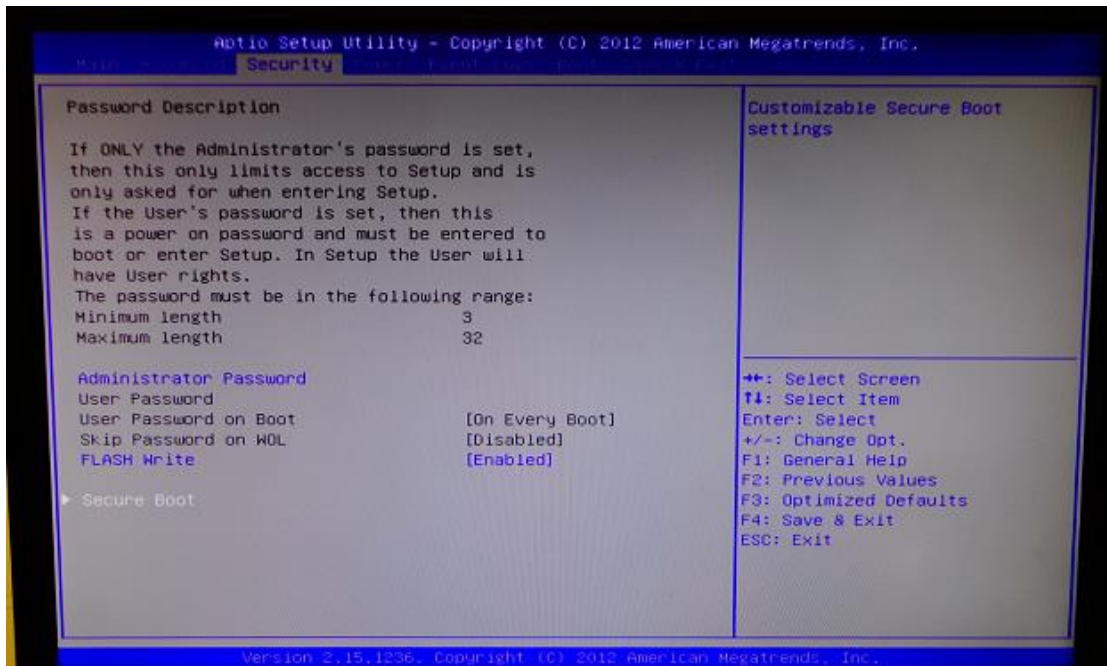


Figure 10 – Default Key Provisioning [Disabled]

2. Select Secure Boot Control and select [Disabled]

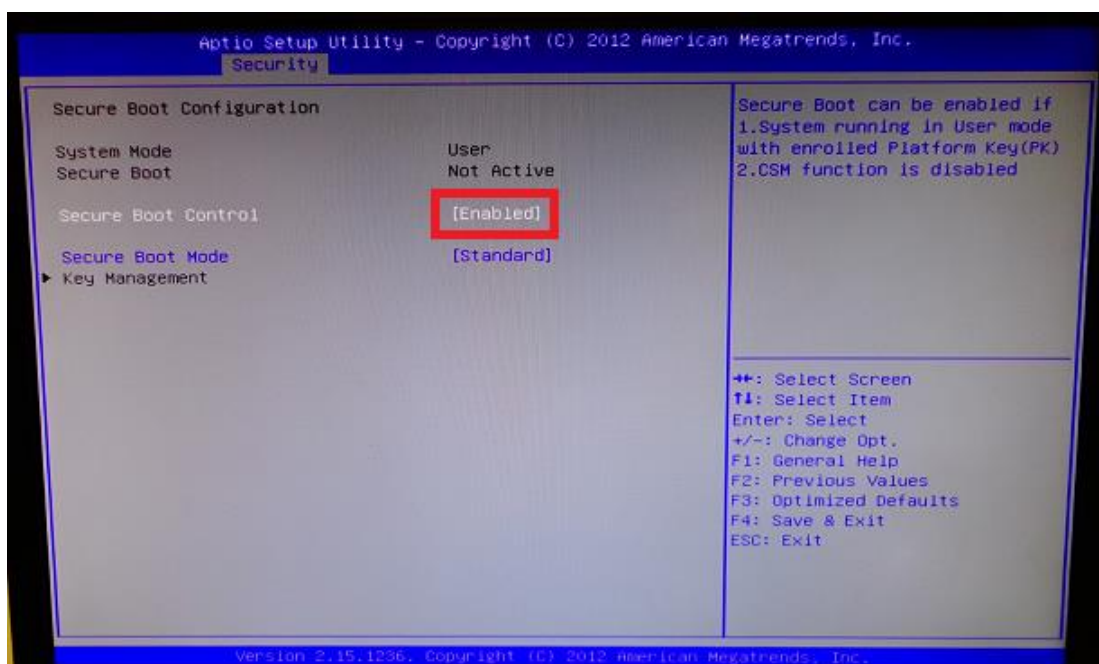


Figure 11 – Disabling Secure Boot

3. Press **<ESC key>** to exit the Security Menu and navigate to the Boot Menu.
4. Select **<CSM parameters>** and change the settings to following:

CSM Parameters
CSM Configuration
Launch CSM **[Enabled]**
Boot Option filter **[UEFI and Legacy]**
Launch PXE OpROM policy **[Legacy Only]**
Launch Storage OpROM policy **[Legacy Only]**
Launch Video OpROM policy **[Legacy Only]**

Other PCI device ROM priority **[Legacy OpROM]**

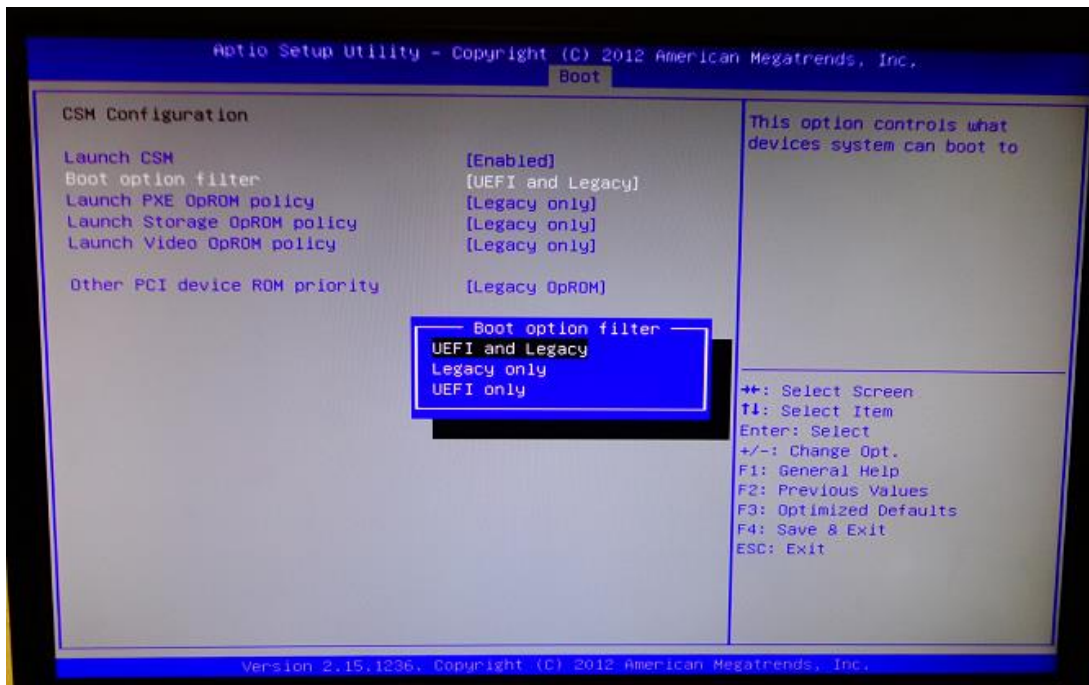


Figure 12 -

5. Once all BIOS settings have been configured press **<F4>** key to Save and Exit the BIOS Setup.

Additional information:

For BIOS, Drivers and Documentation enquiries please contact Viglen Technical Support Department on technical@viglen.co.uk.

Remember to include your PC serial number in all correspondence.