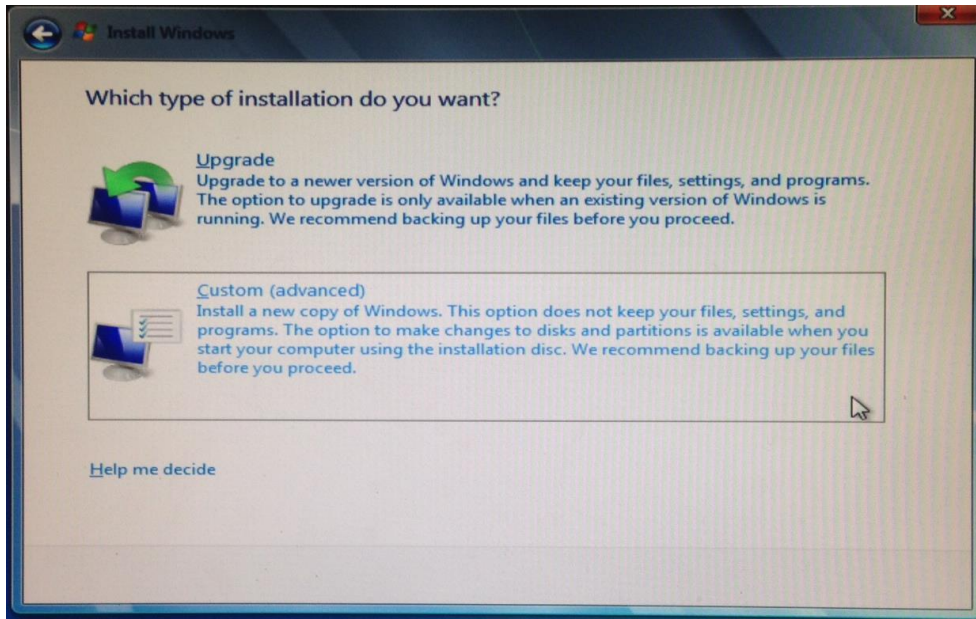


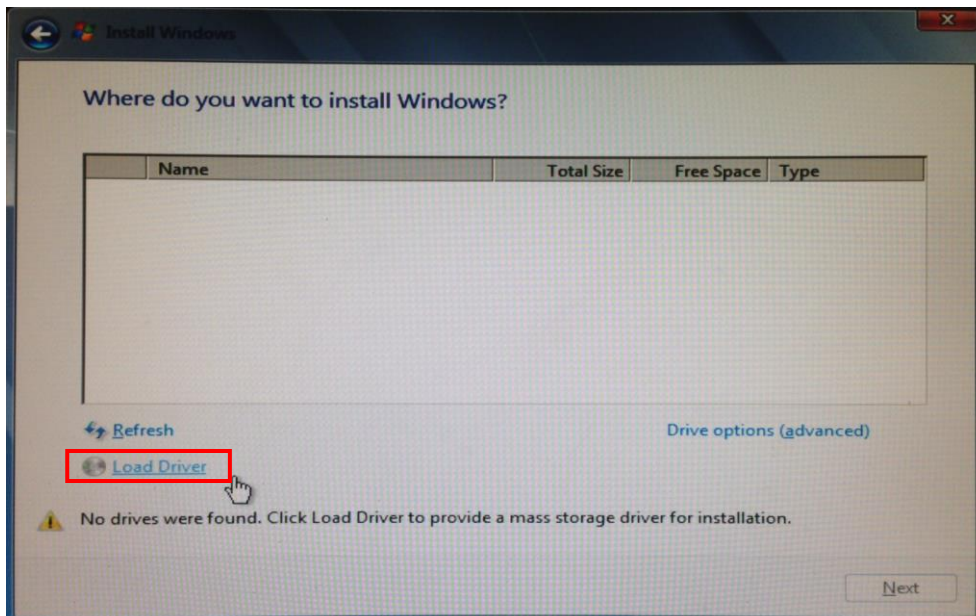
Installing Win7 on Vig450j

Before booting to installation CD/DVD make sure you have copied the required driver (RSTe_4.1.0.1047_F6-Drivers) to a USB stick and the USB stick is plugged into the PC.

1. Boot to installation disk. When Setup is at the stage shown by the screenshot below, select 'Custom (Advanced)'.



2. On the "Where do you want to install Windows?" page press 'Load Driver'

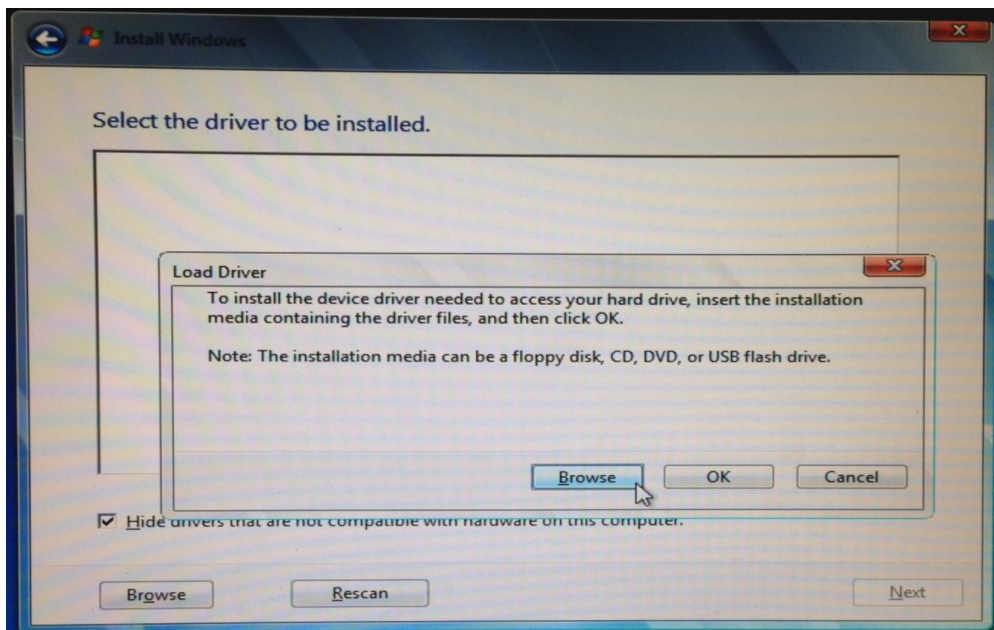


viglen

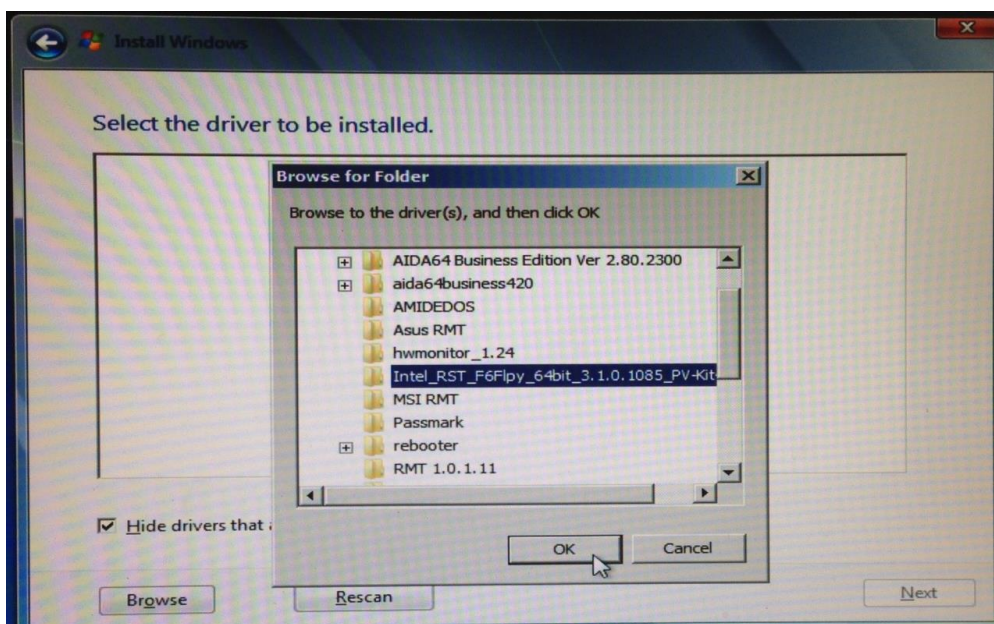
Great
Minds
Think

viglen

3. Press **'Browse'** to bring up a window which lets you specify the location of the driver.



4. Navigate to your USB stick and find the folder with the driver inside it. The folder will be called something similar to *"RSTe_4.1.0.1047_F6-Drivers"*. Select this folder and press **'OK'**.

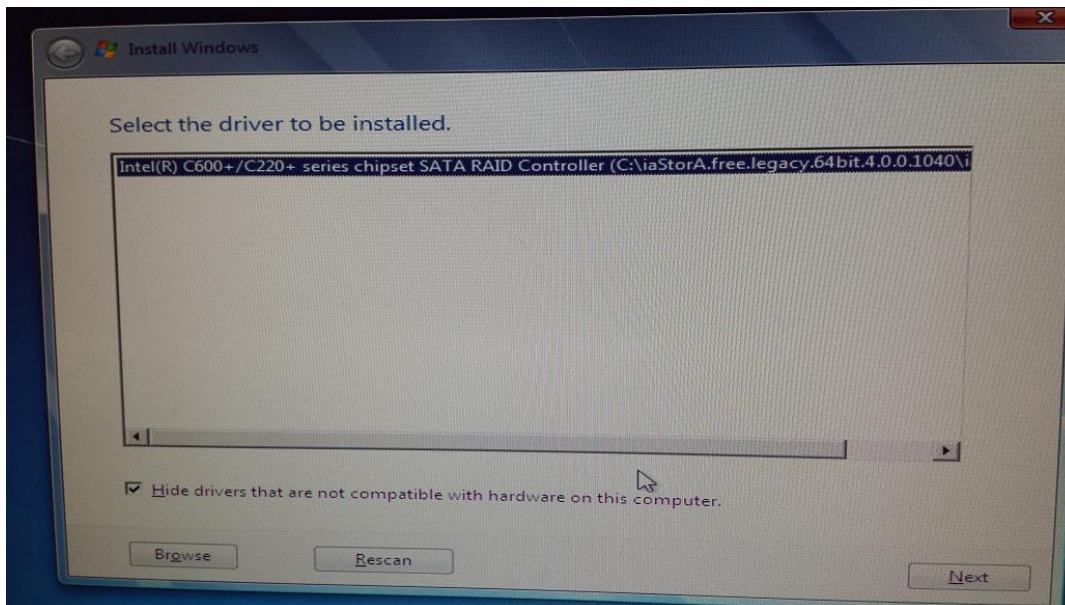


viglen

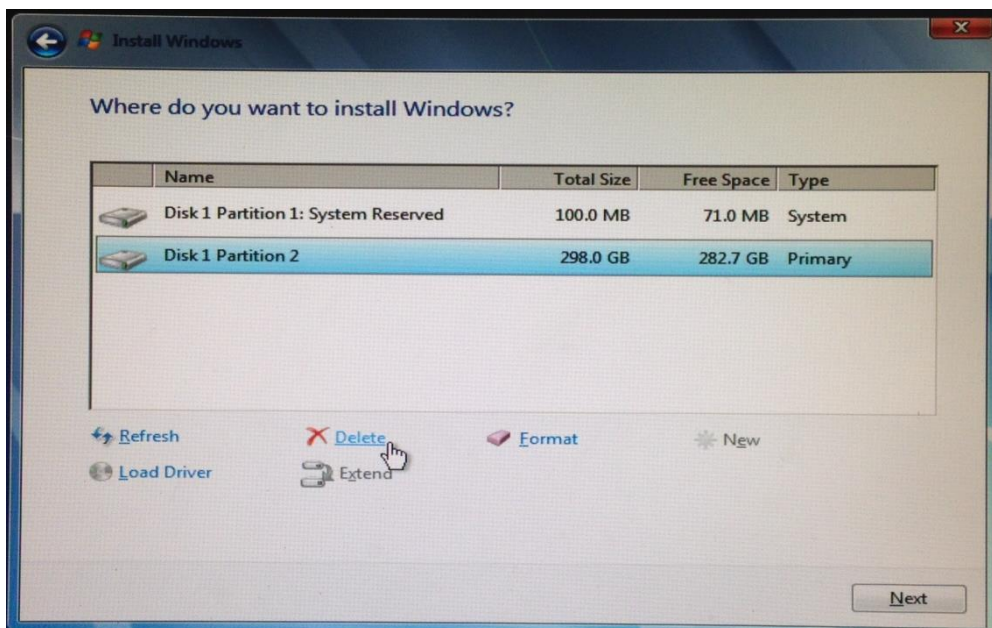
Great
Minds
Think

viglen

- Compatible drivers should appear. Select the driver called *“Intel(R) C600+/C220+ series chipset SATA RAID Controller”* and press **‘Next’**.



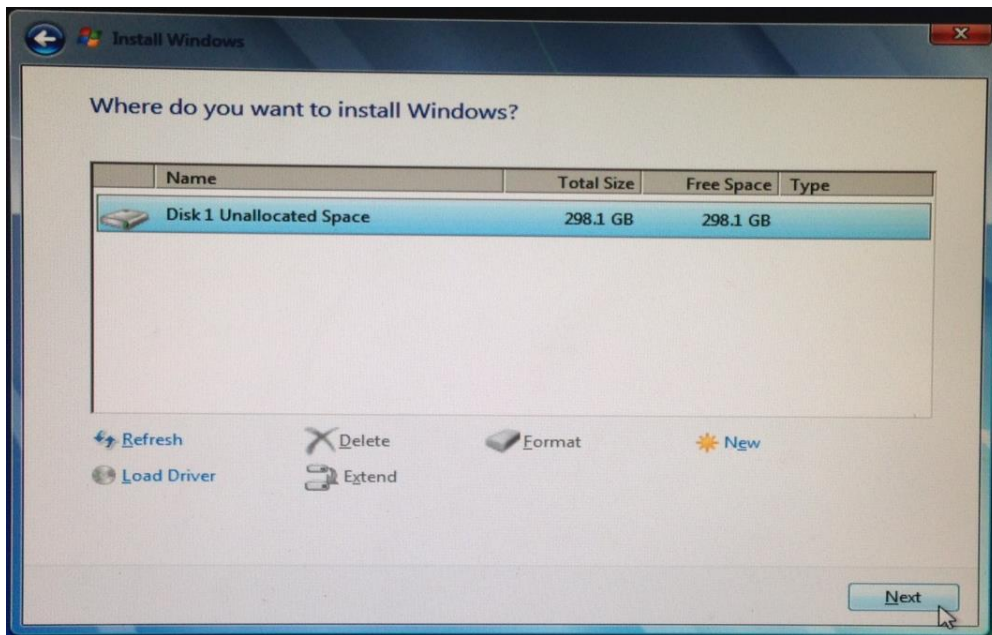
- After this you will be taken back to the *“Where do you want to install Windows?”* page. Select each partition, press Drive Options and then press Delete to remove the partition until only one *Unallocated Space* remains.



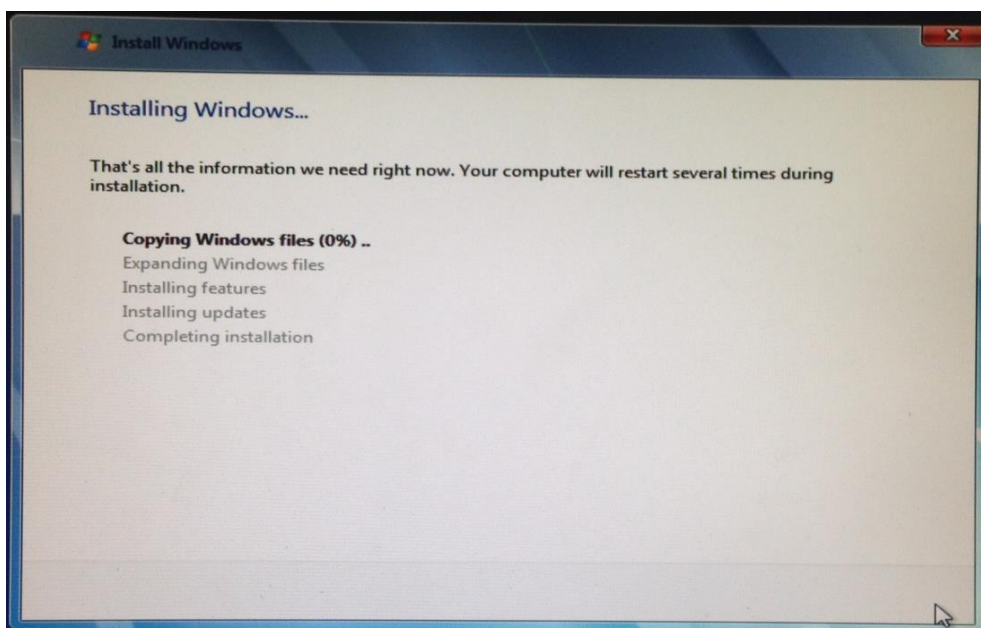
viglen

Great
Minds
Think

viglen



7. Make sure this *Unallocated Space* is selected and press **'Next'** to begin the installation. Once this is done the *"Installing Windows"* page will appear with the progress of the installation.



viglen

Great
Minds
Think

viglen