

Windows 8/8.1 BIOS Setting VIG690M (PMPMS690)

Vig690 system configured with Windows 7 or Windows 8.1 will have following default BIOS settings. If you wish to downgrade from Windows 8.1 to Windows 7 then BIOS must be configured to Non-UEFI mode.

Windows 8/8.1 UEFI mode BIOS settings.

Windows 8/8.1 Feature	[Enabled]
MSI Fast BOOT	[Enabled]
Secure Boot Support	[Enabled]
Secure Boot Mode	[Custom]

Windows 7 (Non UEFI Mode) BIOS settings.

Windows 8/8.1 Feature	[Disabled]
MSI Fast Boot	[Disabled]
Fast Boot	[Disabled]

To enable downgrade to Windows 7 operating system, BIOS settings must be changed to boot into Legacy BIOS mode (Non UEFI Mode).

Note

Please ensure the changes of the following settings are performed by personnel with some previous experience/knowledge of altering BIOS settings.



Figure 1- BIOS setup Screen

BIOS Settings for Windows 8/8.1 Operating System (UEFI Mode)

Accessing BIOS Setup

Press the **** or **<F1>** key to access BIOS setup during POST checks.

Note: To access the BIOS when MSI Fast boot is enabled, you will need to power down the system and wait 20 seconds before powering up the system; on power on Press the **** or **<F1>** key to access BIOS setup.

Enabling Windows 8/8.1 Features [UEFI Mode]

1. From the BIOS main menu select **<Settings>**, **<Advanced>**, **<Windows 8/8.1 Configuration>**
2. In the 'Windows 8/8.1 Configuration menu Enable below settings:

Windows 8/8.1 Feature	[Enabled]
MSI Fast BOOT	[Enabled]

For Windows 7 operating systems above settings should be set to Disabled.

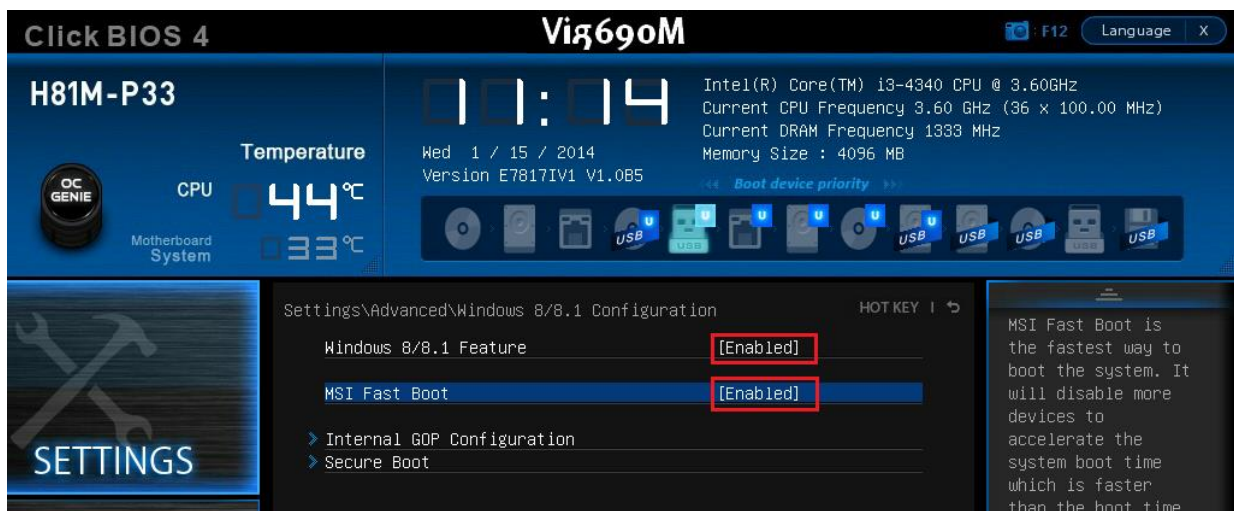


Figure 2 - Windows 8/8.1 Configuration screen

3. Press **<F10>** to save and exit to activate the setting's.

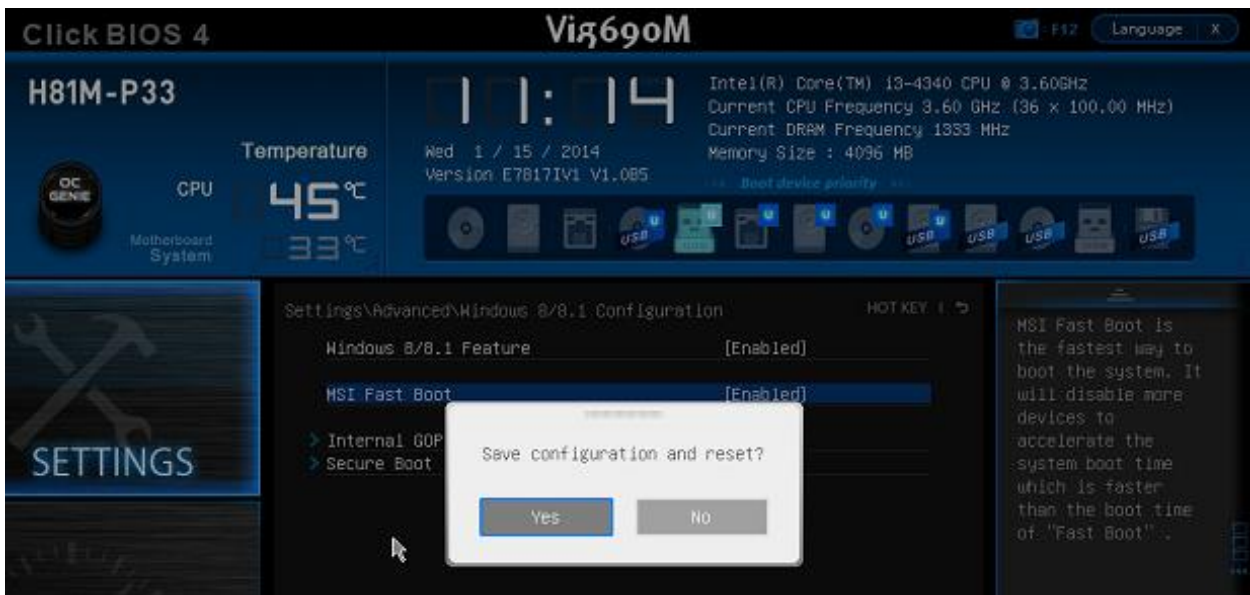


Figure 3 – Save configuration and reset

4. After rebooting the system go back into BIOS setup. From the BIOS menu select <Settings>, <Advanced>, <Windows 8/8.1 Configuration>
5. Select <Secure Boot> from Windows 8/8.1 Configuration screen.
 - A. Highlight Secure Boot and select <Enabled>
 - B. Select 'Secure Boot Mode' and Select <Custom>

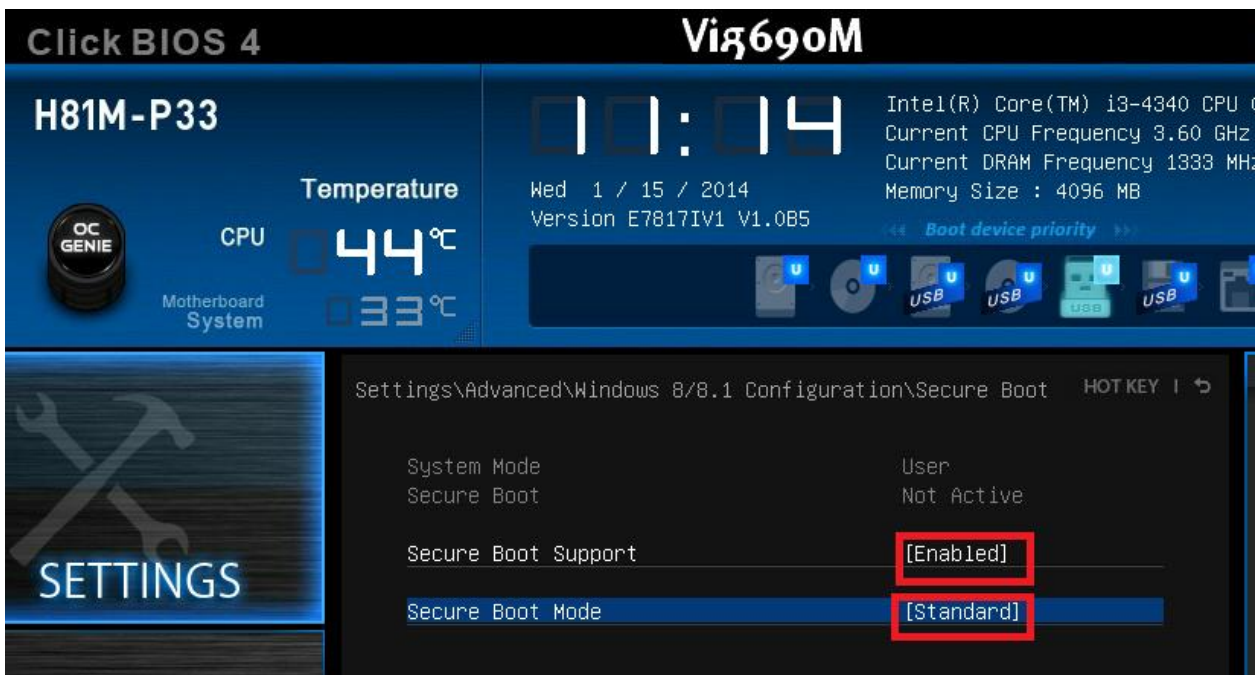


Figure 4 – Secure Boot option Screen

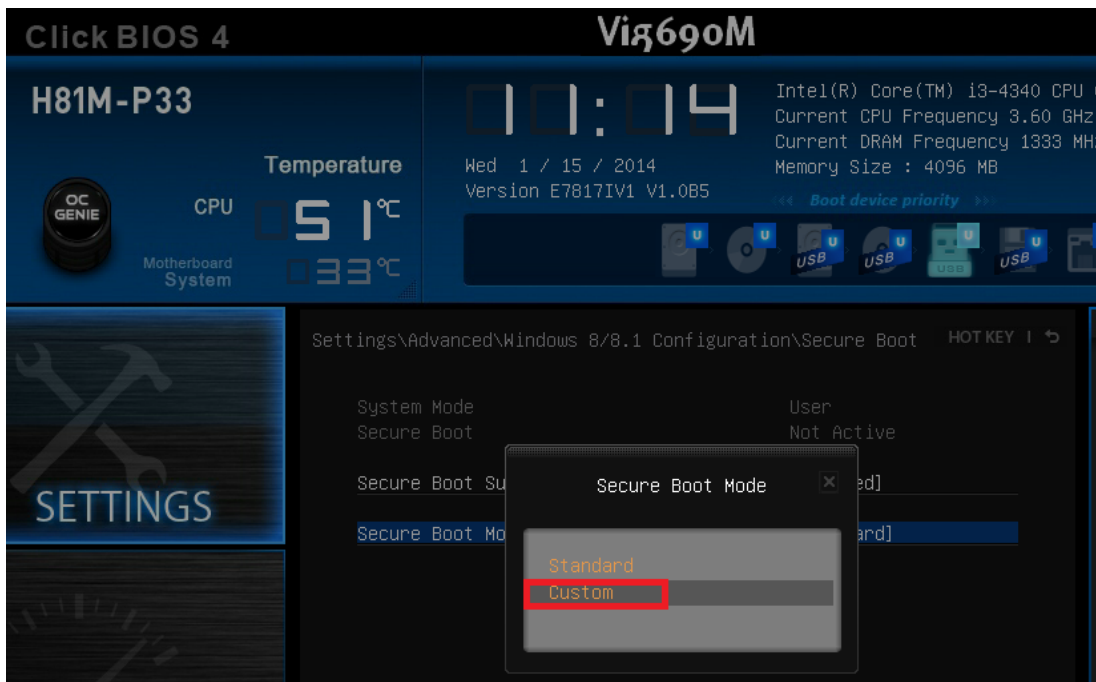


Figure 5 – Secure Boot Mode option

6. Select the **<Default Key Provisioning>** and select **<Enabled>**.
 - A. Select, **<Enroll All factory Default Keys>** to load factory Default Secure variables.
 - B. A confirmation window will request if you would wish to install factory default secure variables select **<Yes>** to confirm.



Figure 6 – Secure Boot/ Default Key Provision option



Figure 7 - Secure Boot/ Default Key Provision option

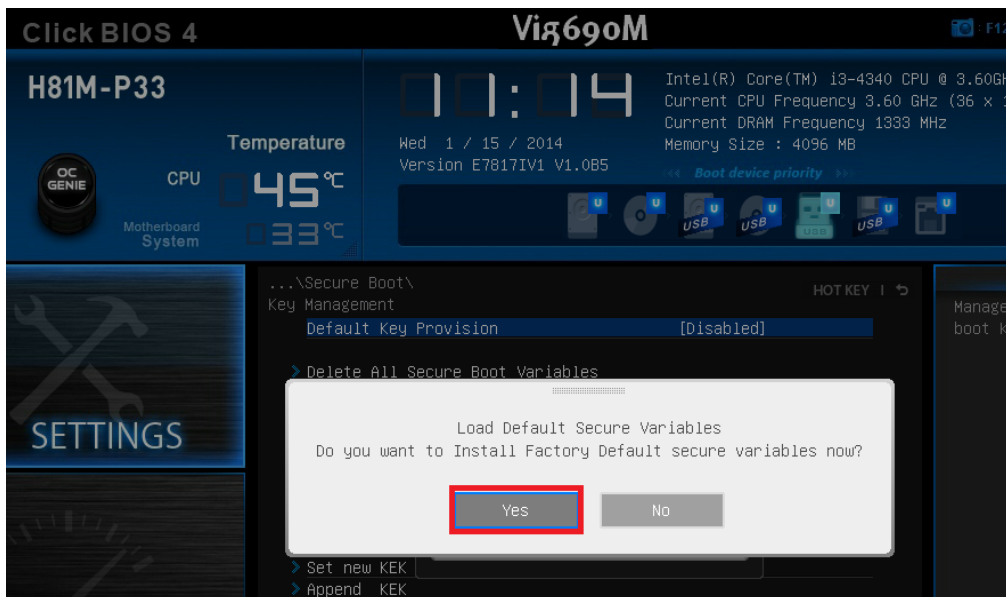


Figure 8 - Secure Boot/ Default Key Provision option

Once the Default Secure Boot keys are installed it will state 'Installed' as shown in below

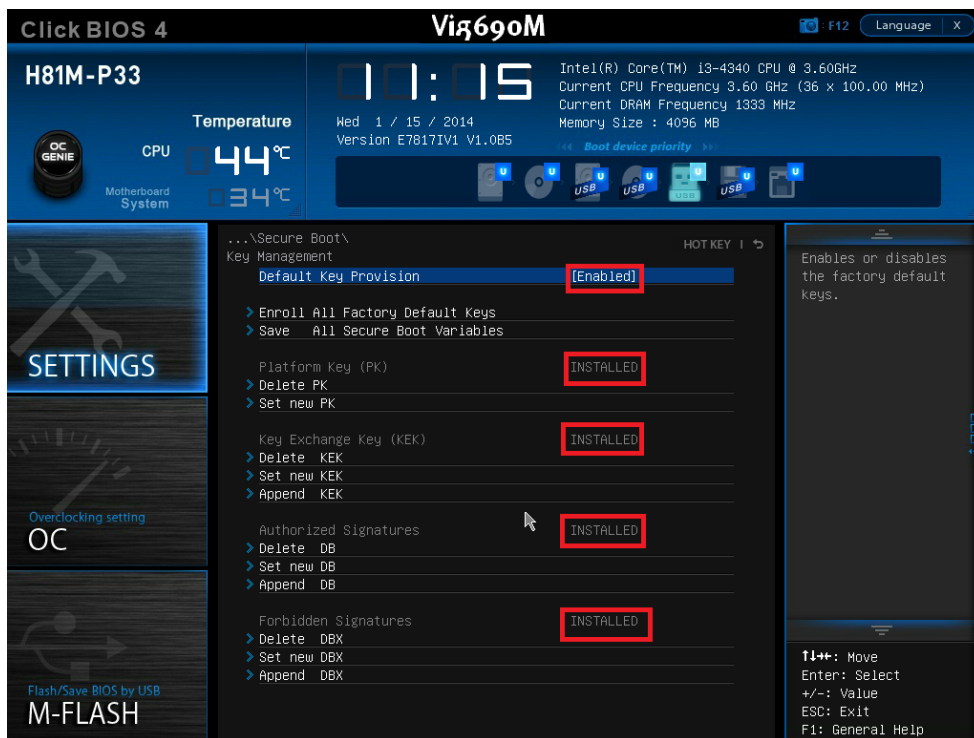


Figure 9 – Secure Boot Key management screen

7. Press <Exc> to exit the screen
8. Go into Boot Menu and ensure boot order set to UEFI.

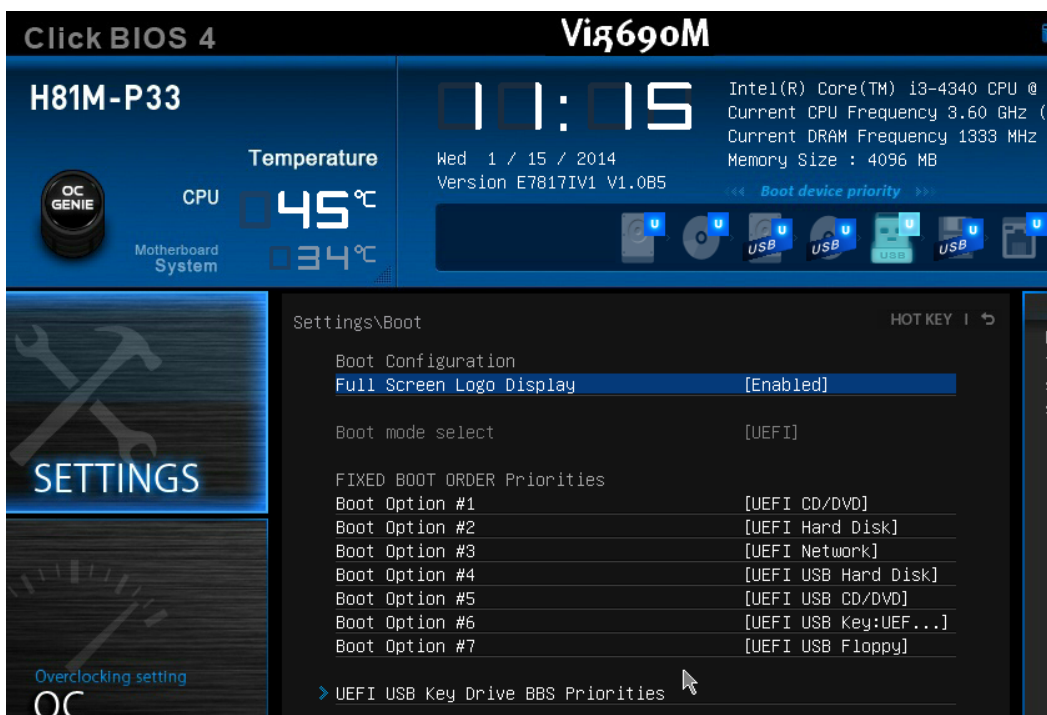


Figure 10 – UEFI Boot settings

9. Once all BIOS settings have been configured press <F10> key to Save and Exit the BIOS Setup.

Disabling Windows 8/8.1 Features [Non UEFI Mode]

Disabling Secure Boot

1. Select 'Default Key Provisioning' and Change the Setting to [Disabled]



Figure 11 – Default Key Provisioning [Disabled]

2. Change following settings under Secure Boot screen:

- A. Secure Boot Support **[Disabled]**
- B. Secure Boot Mode **[Standard]**

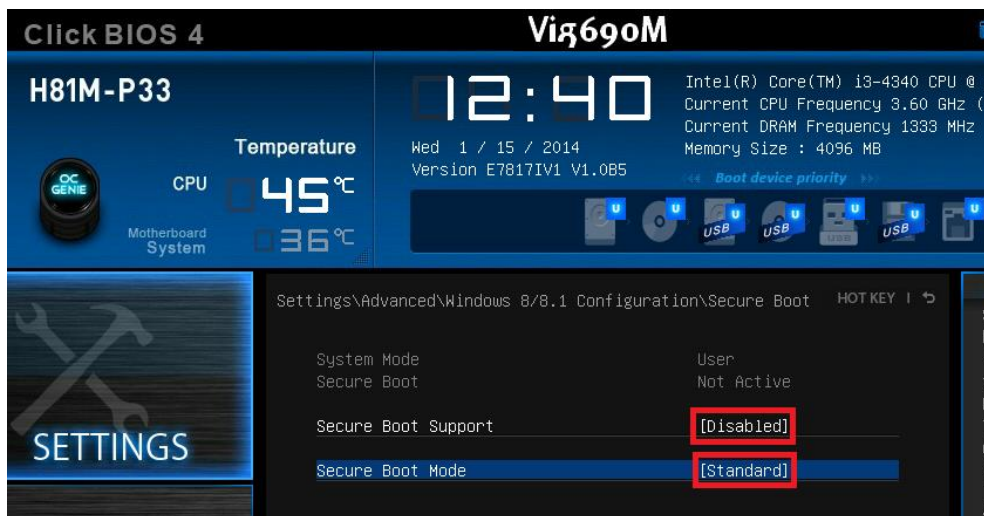


Figure 12 – Secure boot Screen

3. Change following settings under Windows 8/8.1 Configuration screen:

- A. Windows 8/8.1 Feature **[Disabled]**
- B. MSI Fast Boot **[Disabled]**
- C. Fast Boot **[Disabled]**

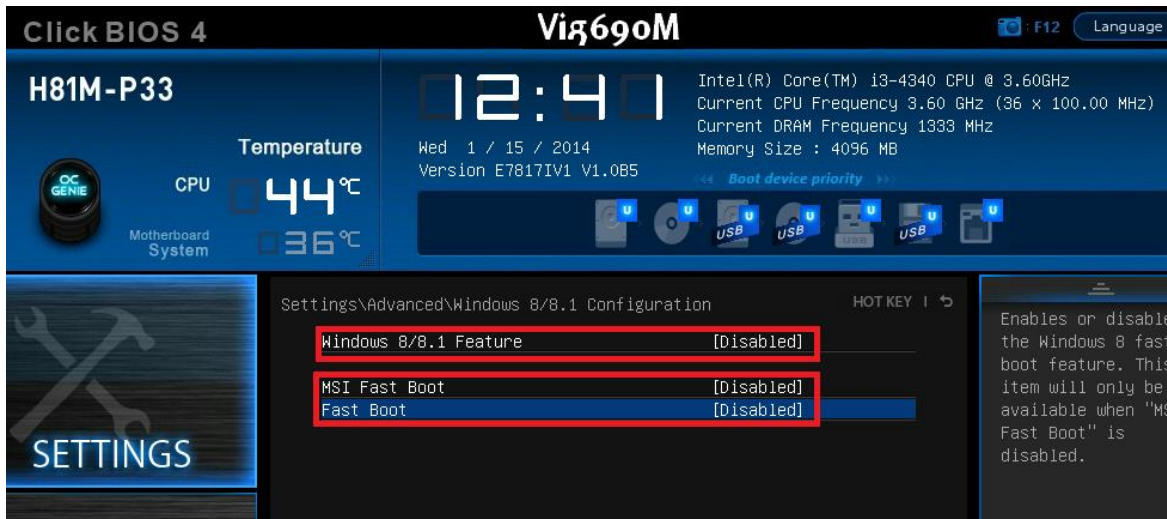


Figure 13 – Windows 8/8.1 configuration screen

10. Press **<Exc>** to exit the screen

11. Go into Boot Menu and ensure boot order set to **[Legacy + UEFI]**

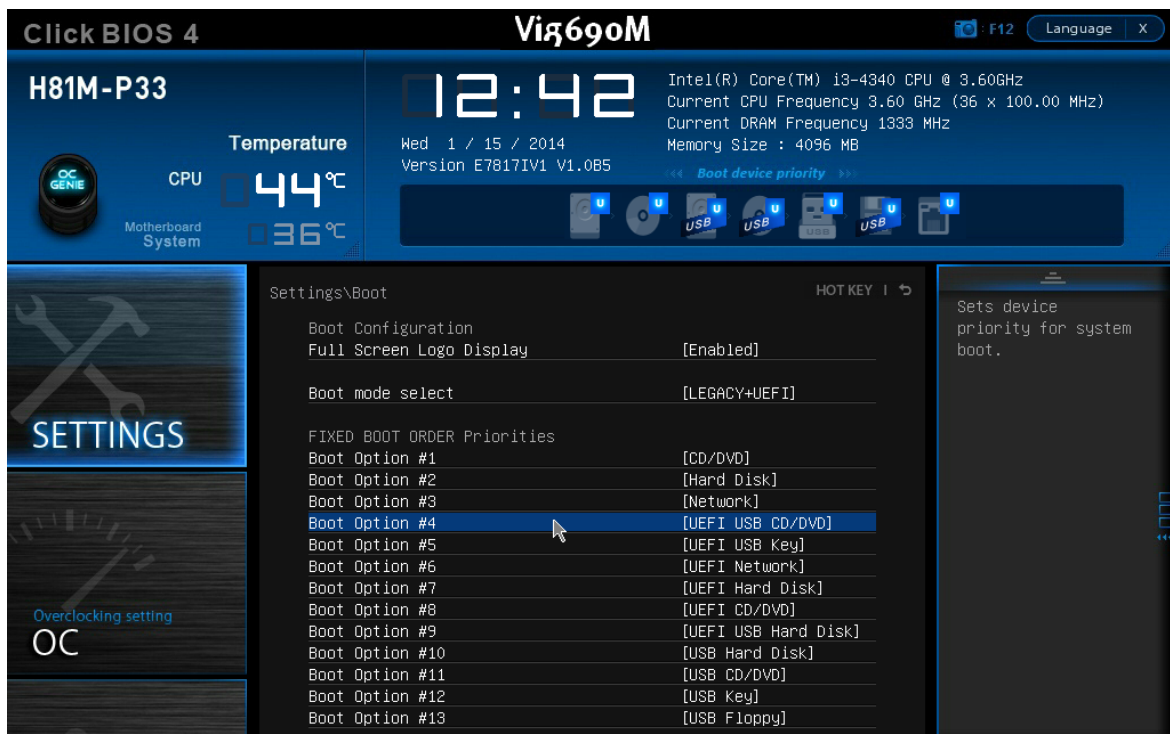


Figure 14 – Boot screen (LEAGACY+UEFI)

12. Once all BIOS settings have been configured press **<F10>** key to Save and Exit the BIOS Setup.

Additional information:

For BIOS, Drivers and Documentation enquiries please contact Viglen Technical Support Department on technical@viglen.co.uk.

Remember to include your PC serial number in all correspondence.