

Windows 8/10 BIOS Settings

Vig711W system configured with Windows 7, Windows 8.1/10 will have following default BIOS settings. If you wish to downgrade from Windows 8.1/10 to Windows 7 or legacy Operating system then BIOS must be configured to Non-UEFI mode.

Windows 8/8.1 UEFI mode BIOS settings.

| | |
|---------------|-----------|
| OS Boot Mode | [UEFI OS] |
| Network Stack | [Enabled] |
| Secure Boot | [Enabled] |

Windows 7 (Non UEFI Mode) BIOS settings.

| | |
|-------------------------|-------------|
| OS Boot Mode | [Legacy OS] |
| Launch PXE OpROM policy | [Enabled] |
| Secure Boot | [Disabled] |

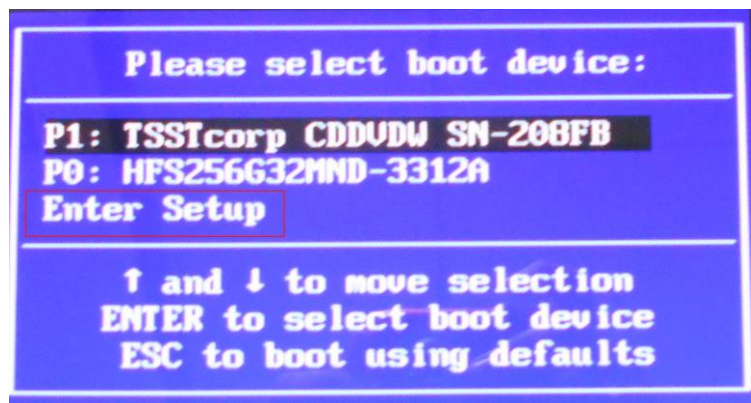
To enable downgrade to Windows 7 operating system, BIOS settings must be changed to boot into Legacy BIOS mode (Non UEFI Mode).

Note

Please ensure the changes of the following settings are performed by personnel with some previous experience/knowledge of altering BIOS settings.

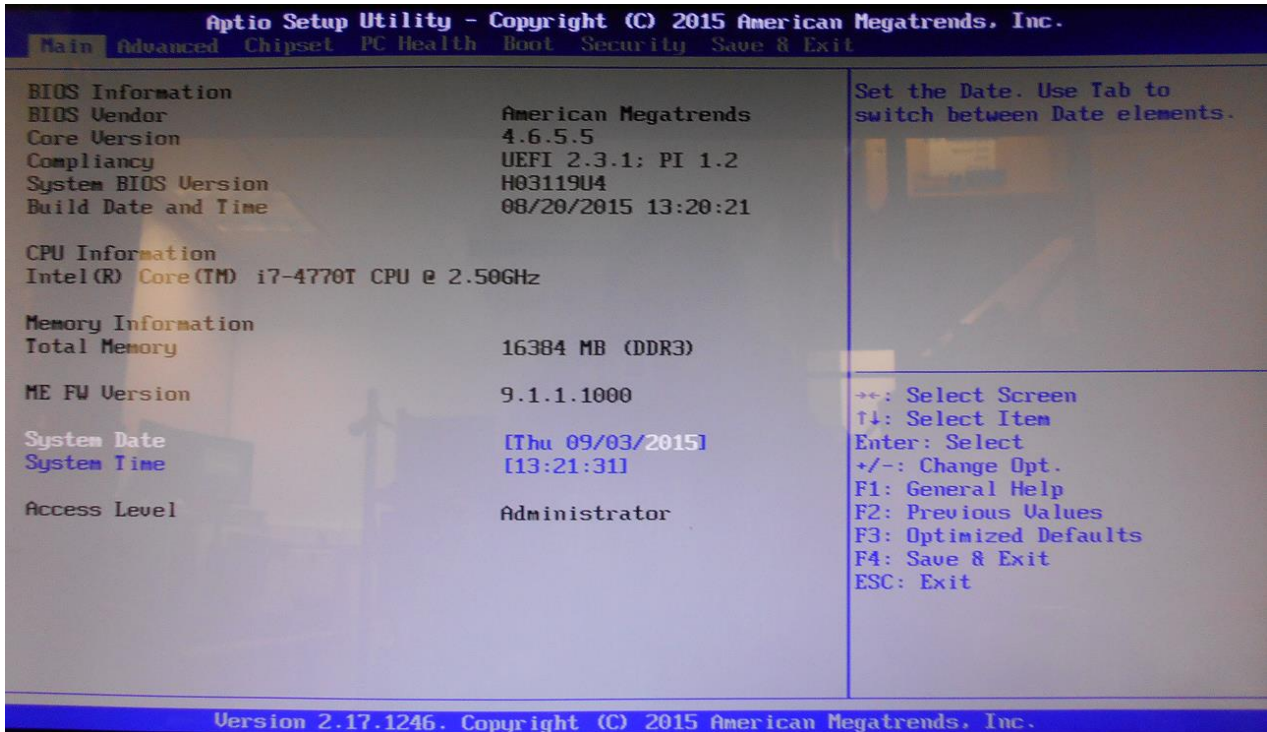
Accessing BIOS Setup

To access the BIOS, Press the F7 key during POST for the boot menu to appear and then select 'Enter Setup'



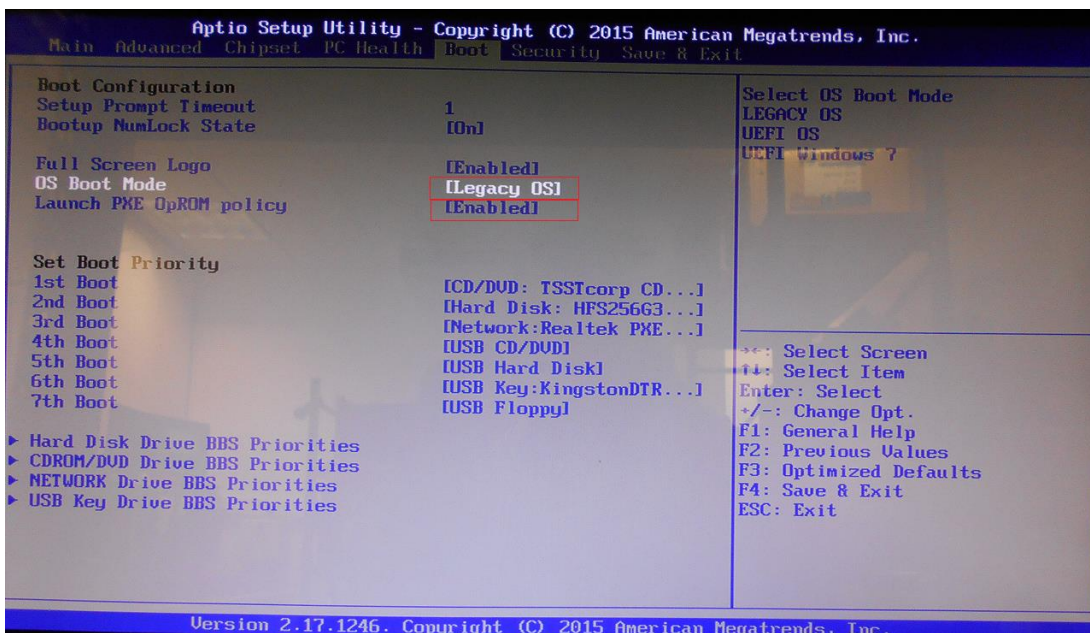
Enabling/Disabling Windows 8 Features

1. From the BIOS main menu select the 'Boot' tab.



2. In the 'Boot configuration menu change following settings:

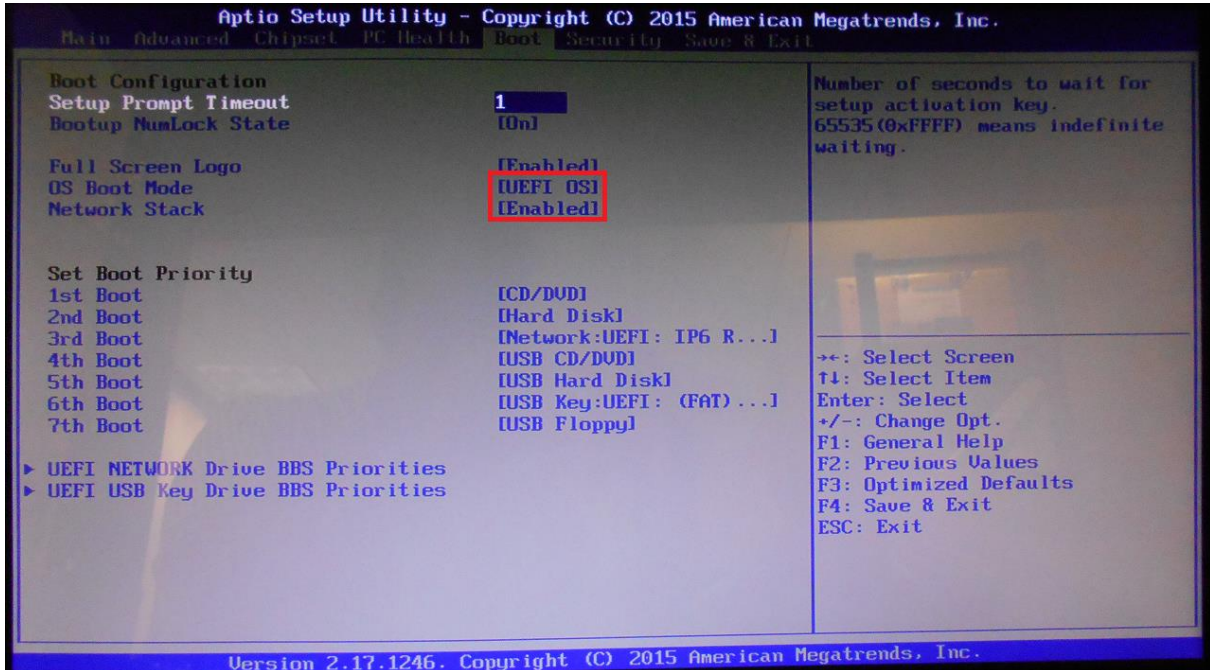
OS Boot Mode [Legacy OS]
 Launch PXE OpROM policy [Enabled]



For Windows 8.1 and 10 following settings should be set:

OS Boot Mode [UEFI OS]

Network Stack [Enabled]



Boot Configuration Menu – Windows 8/10 settings

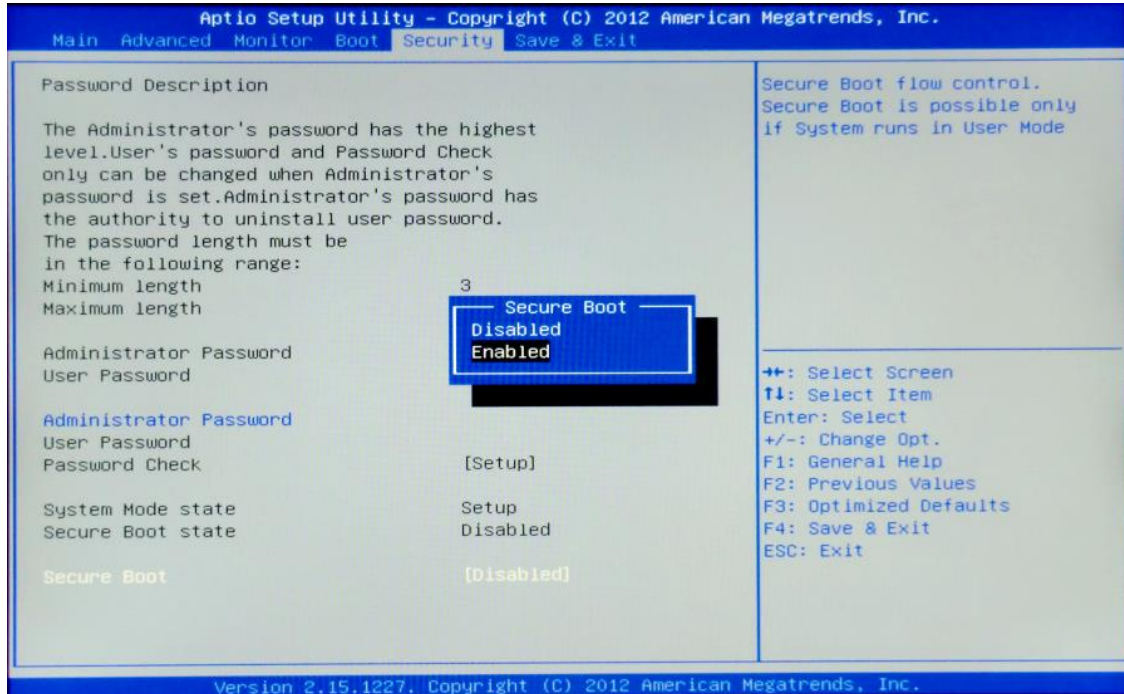
Enabling /Disabling Secure Boot

'Secure Boot' it is recommended this setting is set to 'Enabled' to initialize the Windows 8 secure boot feature when the system boots up.

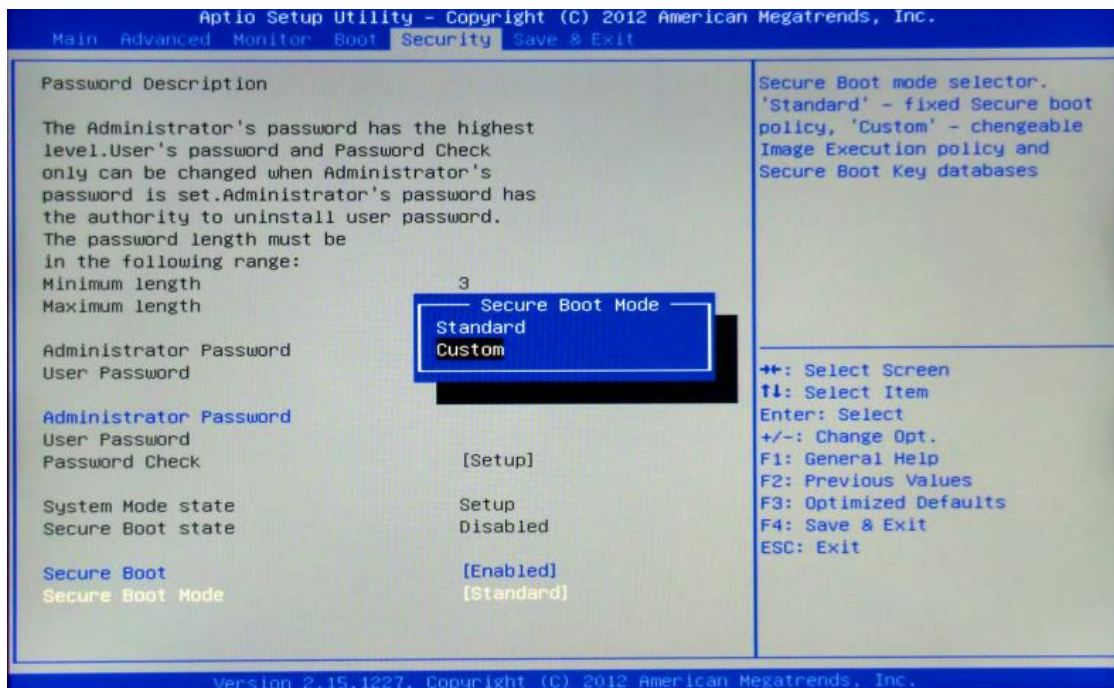
Note: Secure boot is supported under Windows 8 64Bit Operating system. This feature helps in preventing malicious software applications and "Unauthorized" operating systems from loading during the system start-up process.

To Enable Secure Boot

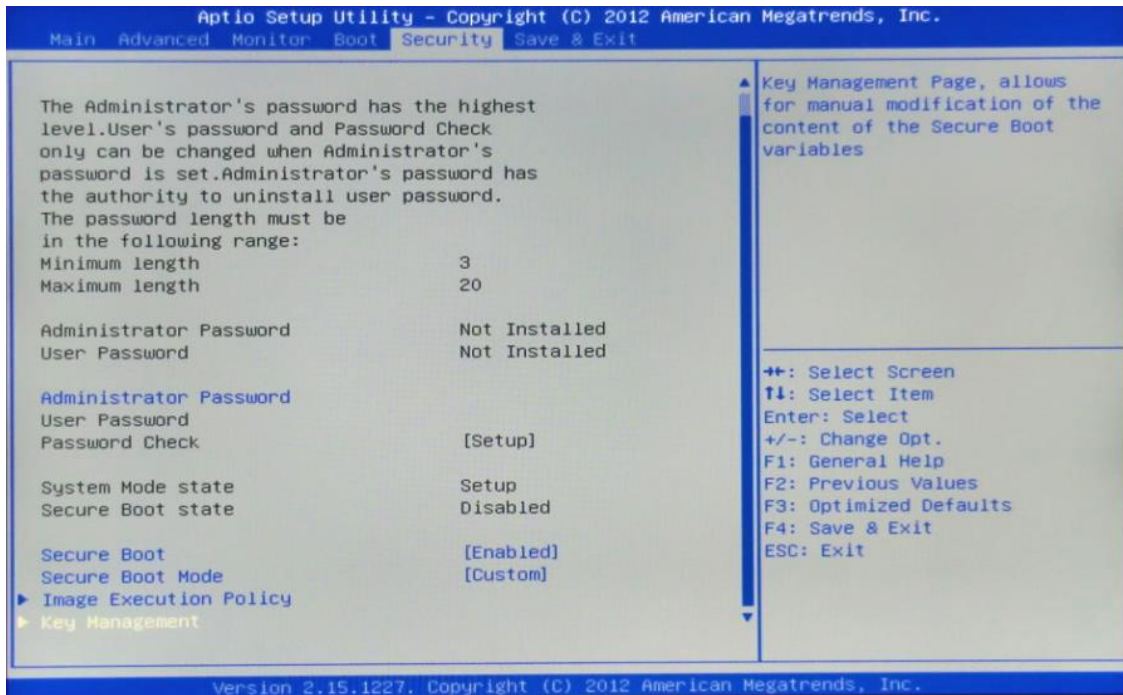
From the BIOS tab options **select** the 'Security' tab and **select the** 'Secure Boot' option, **Set** the 'Secure Boot' option to 'Enabled'



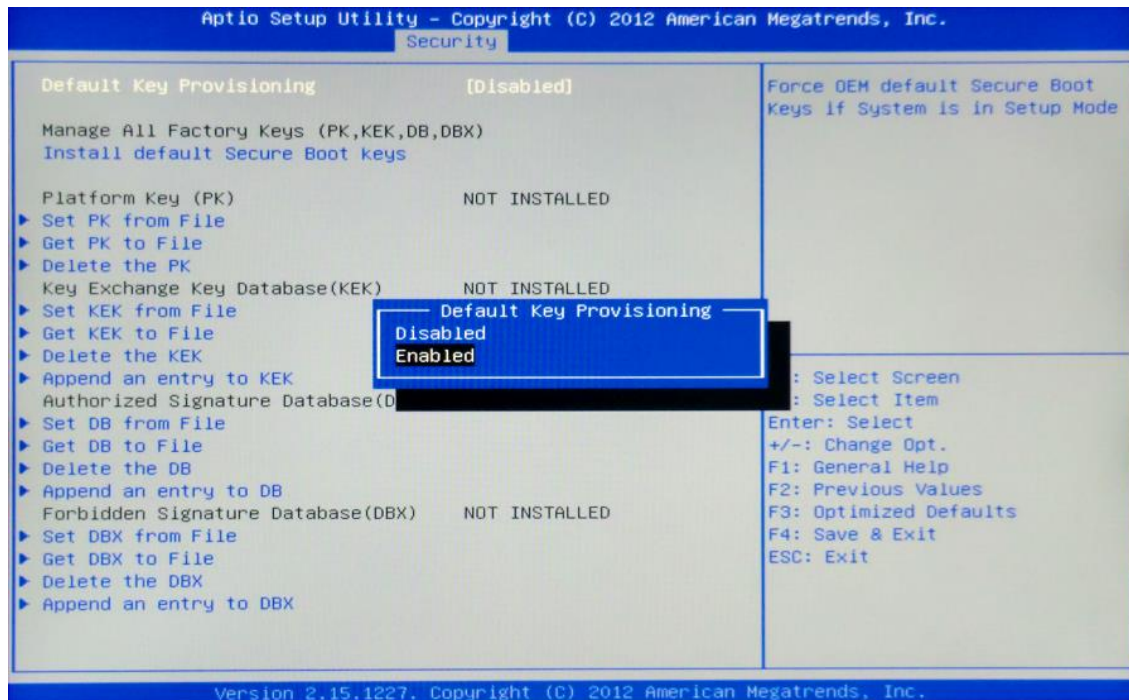
1. Once Secure Boot is **set** to 'Enabled' **scroll down** the active options from the Security Tab options and **Set** the Secure Boot Mode to 'Custom'



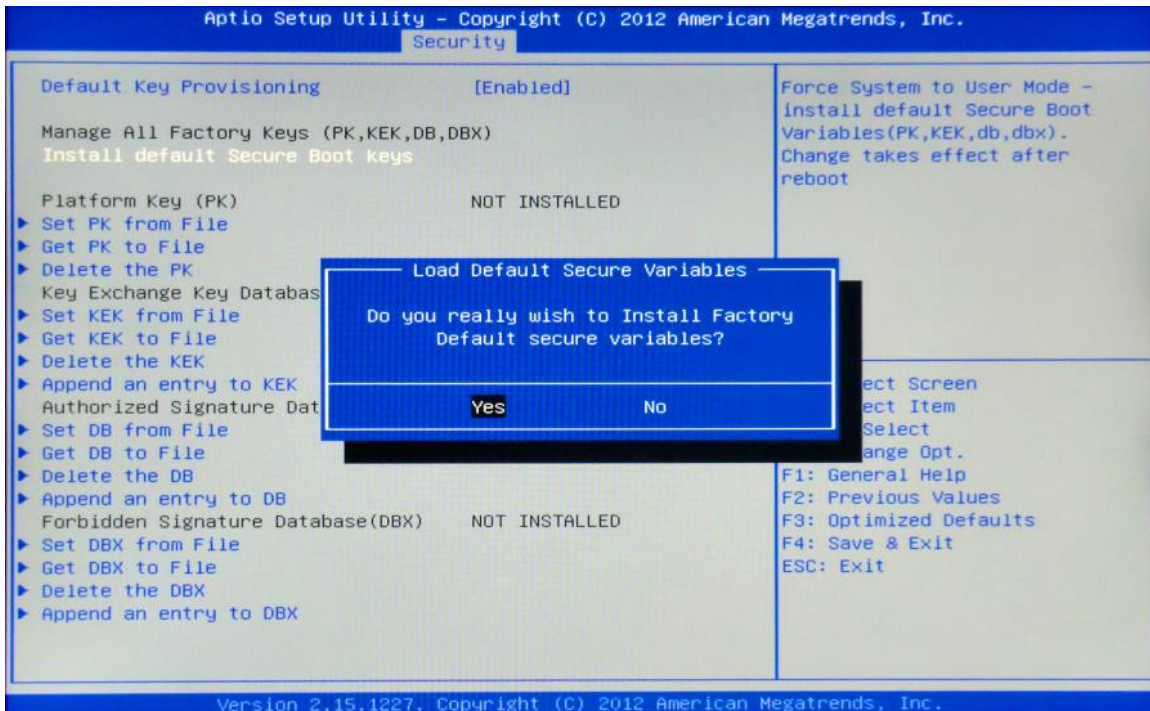
- In Custom mode **scroll down** the active options in the Security Tab option list and **Select** the 'Key Management' Option



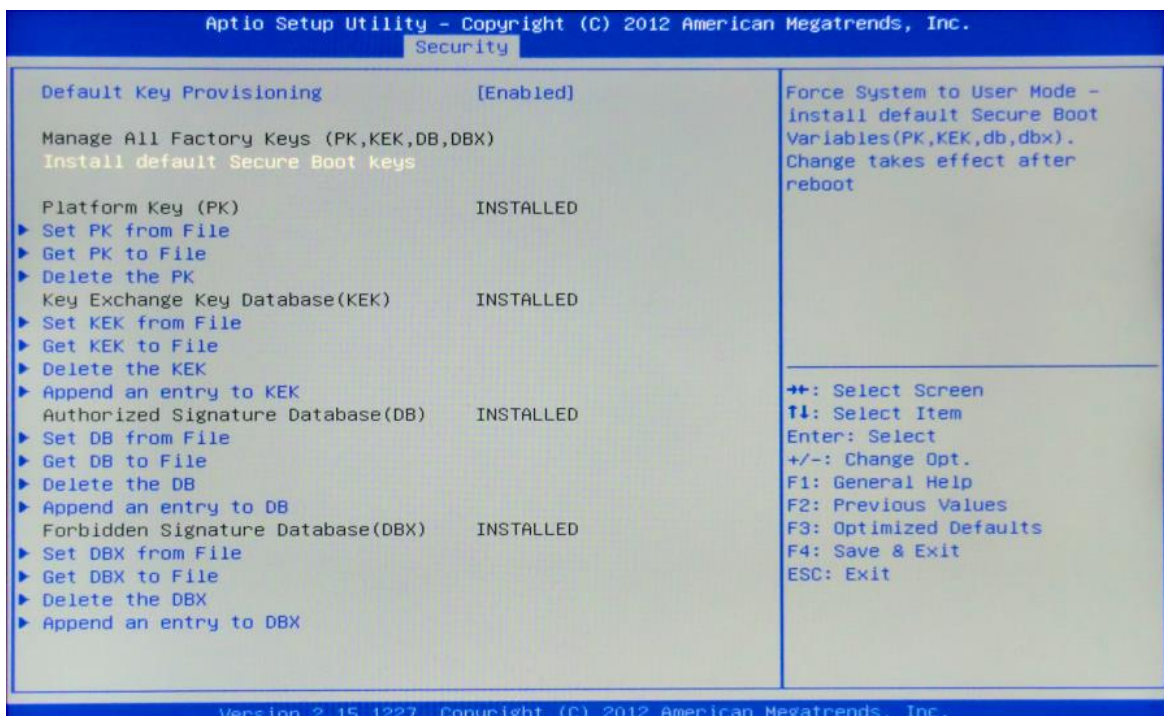
- In the Key management options select the 'Default Key Provisioning' option and Set to 'Enabled'



4. In the Key management options **select** the 'Install default Secure Boot Keys' option and **confirm** Installation in the prompt pop up to install the default secure Boot Keys.

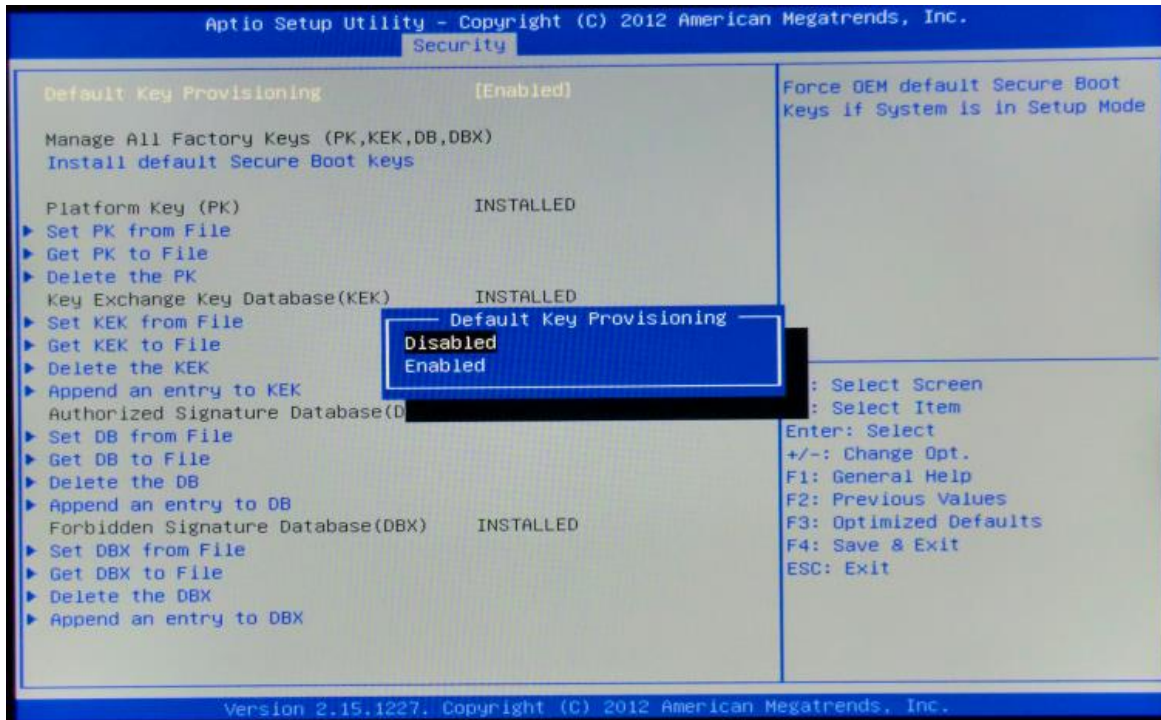


5. Once the Default Secure Boot keys are installed it will state 'Installed' as shown in below image

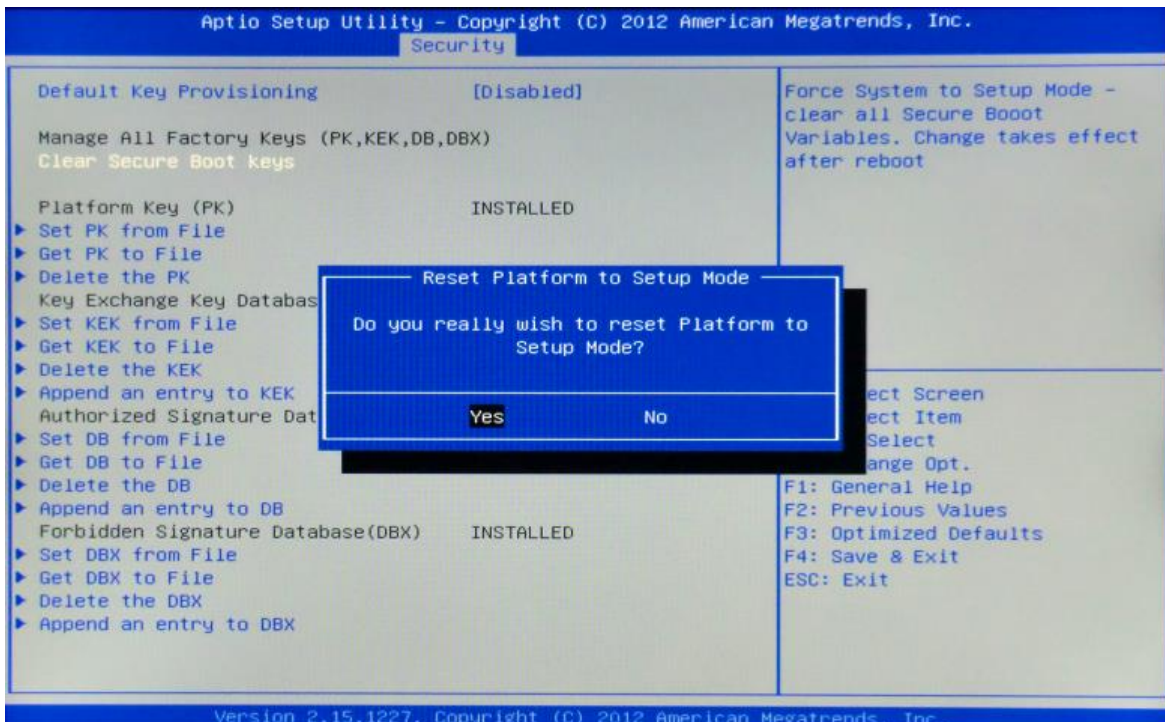


Disabling Secure Boot

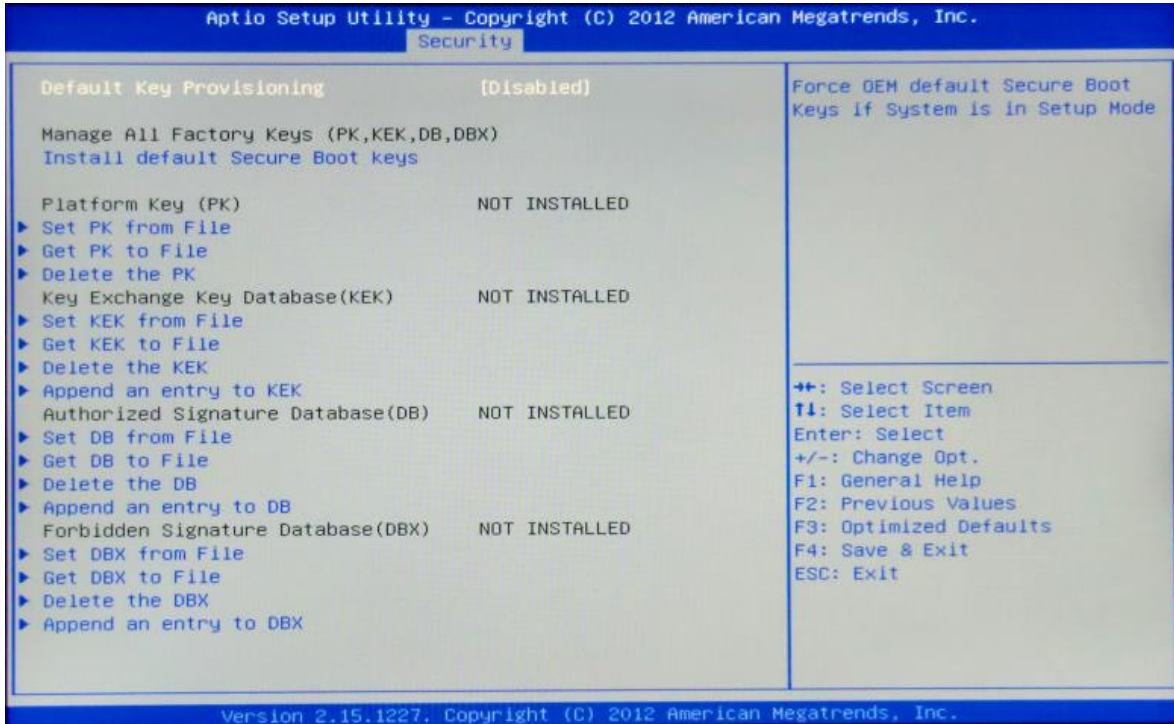
1. In the Key management options **select** 'Default Key Provisioning' and **Set** the option to 'Disabled'



2. **Select** 'Clear Secure Boot Keys' and **confirm** Installation in the prompt pop up to clear the default secure Boot Keys.

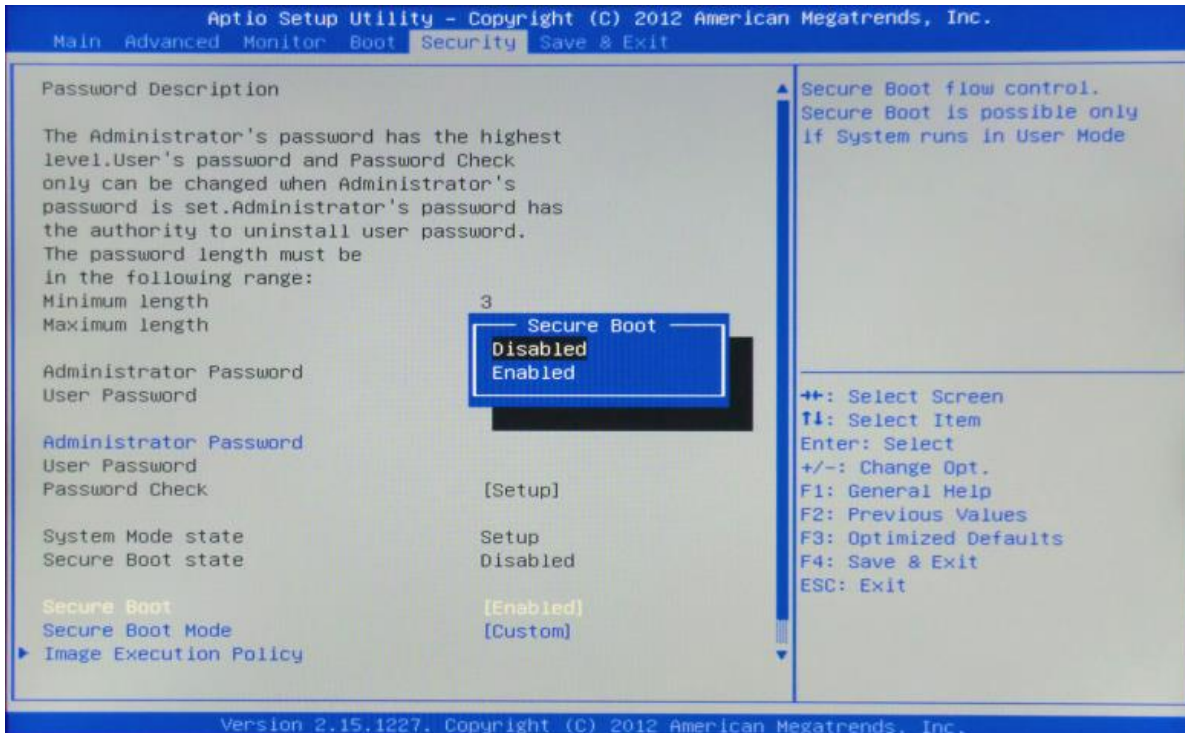


3. Once the secure Boot keys are cleared it will state 'Not Installed' as shown in below



Press Esc to exit the Key provisioning Menu.

4. Select 'Secure Boot' and set the option to 'Disabled'



Once all BIOS settings have been configured press F4 key to Save and Exit the BIOS Setup.

Additional information:

For BIOS, Drivers and Documentation enquiries please contact Viglen Technical Support Department on technical@viglen.co.uk.

Remember to include your PC serial number in all correspondence.