

# Viglen Omnino 5

## Accessing the Omnino 5 AIO Chassis

### Part 1 – Opening the Omnino 5

#### Step 1 - Preparing to remove the back panel from the Omnino 5

Before the integrated stand can be detached the chassis back panel must first be removed. To do this you will need to place the Omnino 5 screen down onto a soft surface and lift the chassis leg to its highest point:

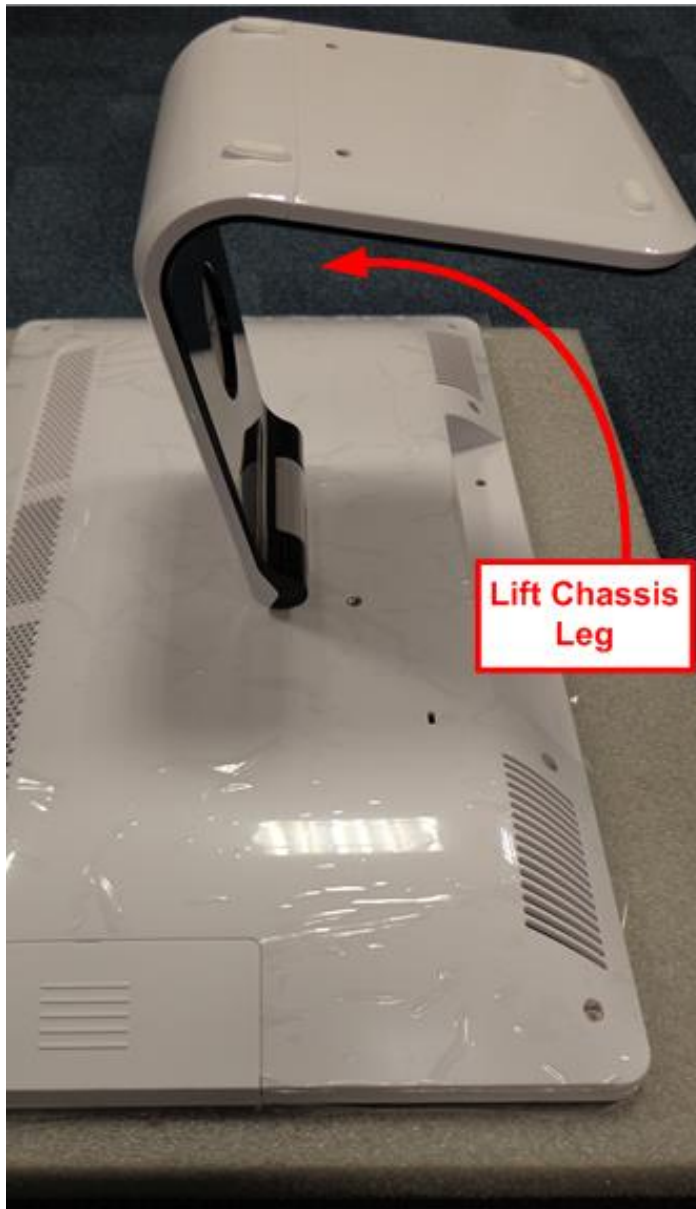


Figure 1 – Preparing to remove the Omnino 5 back panel

**viglen**

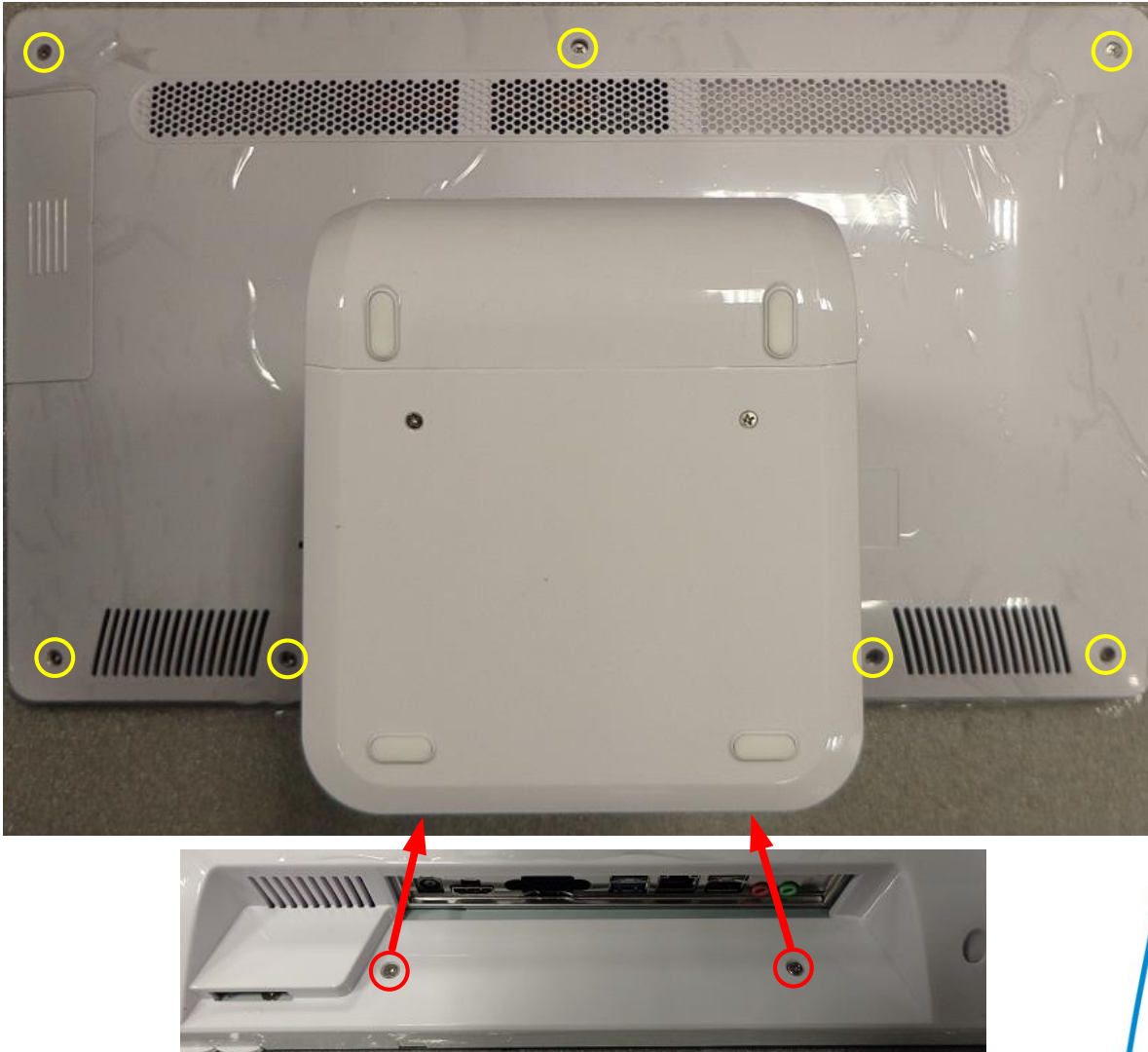
Great  
Minds  
Think

**viglen**

## Step 2 - Locating and removing the back panel Screws

A total of nine chassis screws will then need to be removed from the back panel. There are:

- **Seven Larger Screws** located around the edges of the back panel (**Yellow**)
- **Two Small Screws** located underneath the stand just below the I/O area (**Red**)



**Figure 2 – Locating and removing the back panel screws**

Once all nine screws have been removed you should be able to open the chassis by pulling upward on the chassis stand. Please note that it may be necessary to apply some sudden sharp upward force to remove the back cover.

**viglen**

Great  
Minds  
Think

**viglen**

### Step 3 - Inside the Omnino 5 Chassis

After removing the back panel you will have access to all the PC components within the Omnino 5 chassis.

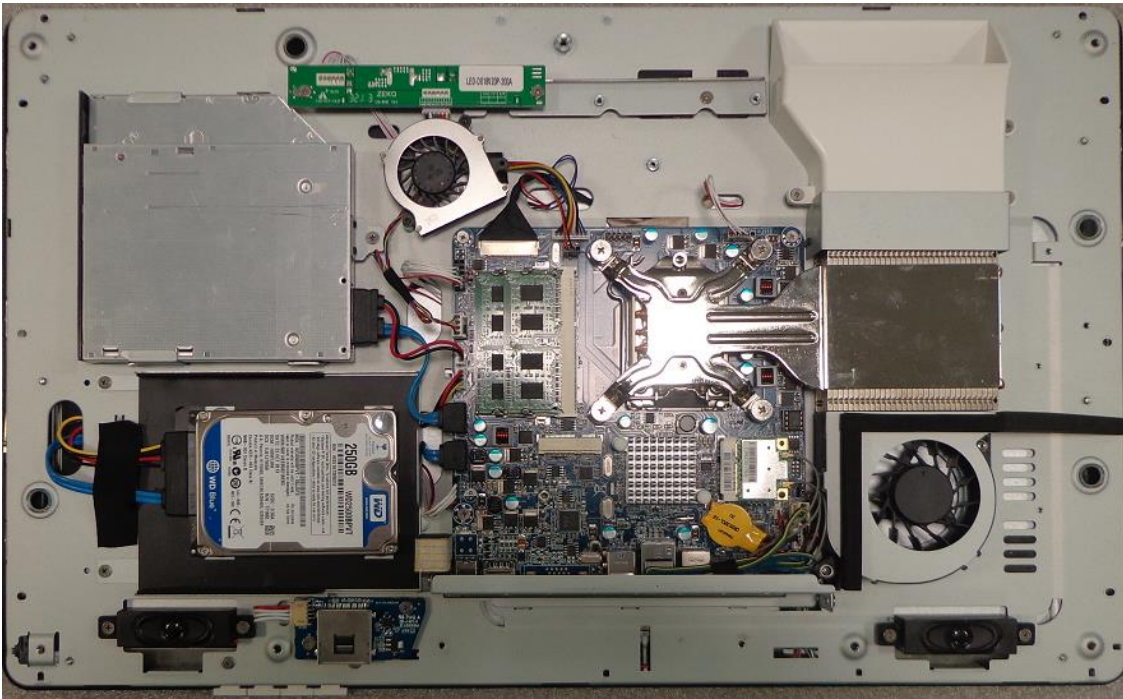


Figure 3 – Fully configured Chassis

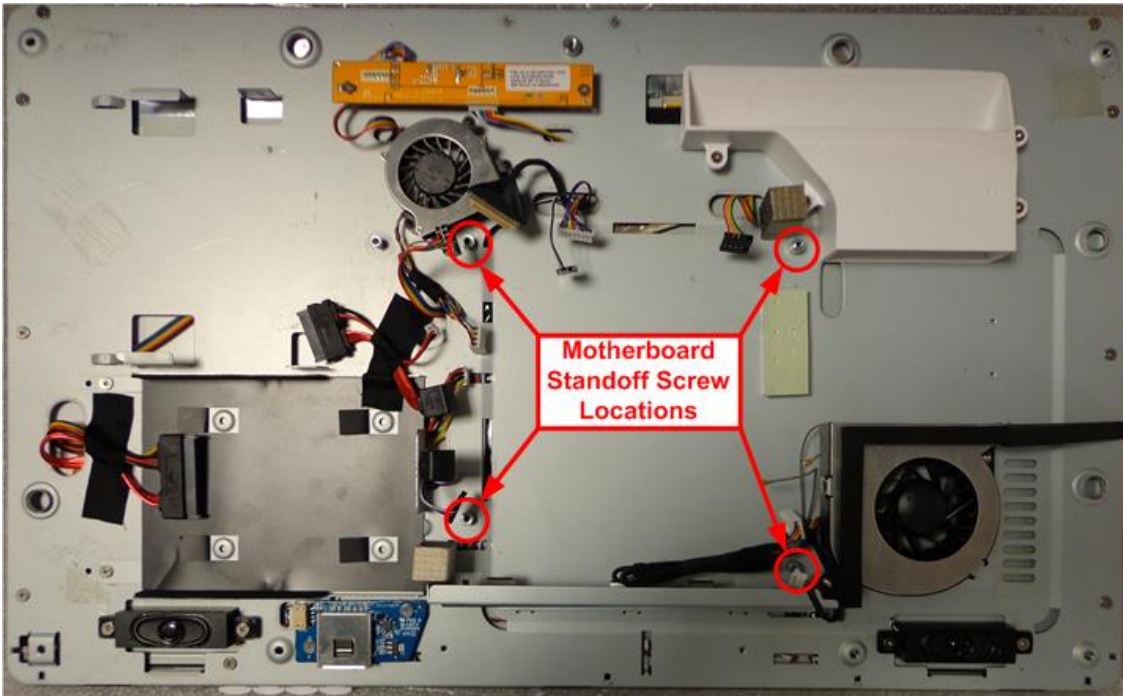


Figure 4 – Empty Chassis

viglen

Great  
Minds  
Think

## Part 2 – Removing the Integrated Stand (optional)

### Step 1 - Removing the integrated stand screws from VESA bracket

On the inside of the back panel you will see a VESA mounting bracket with many screws attached. To release the integrated stand **only the five central screws need removing.**

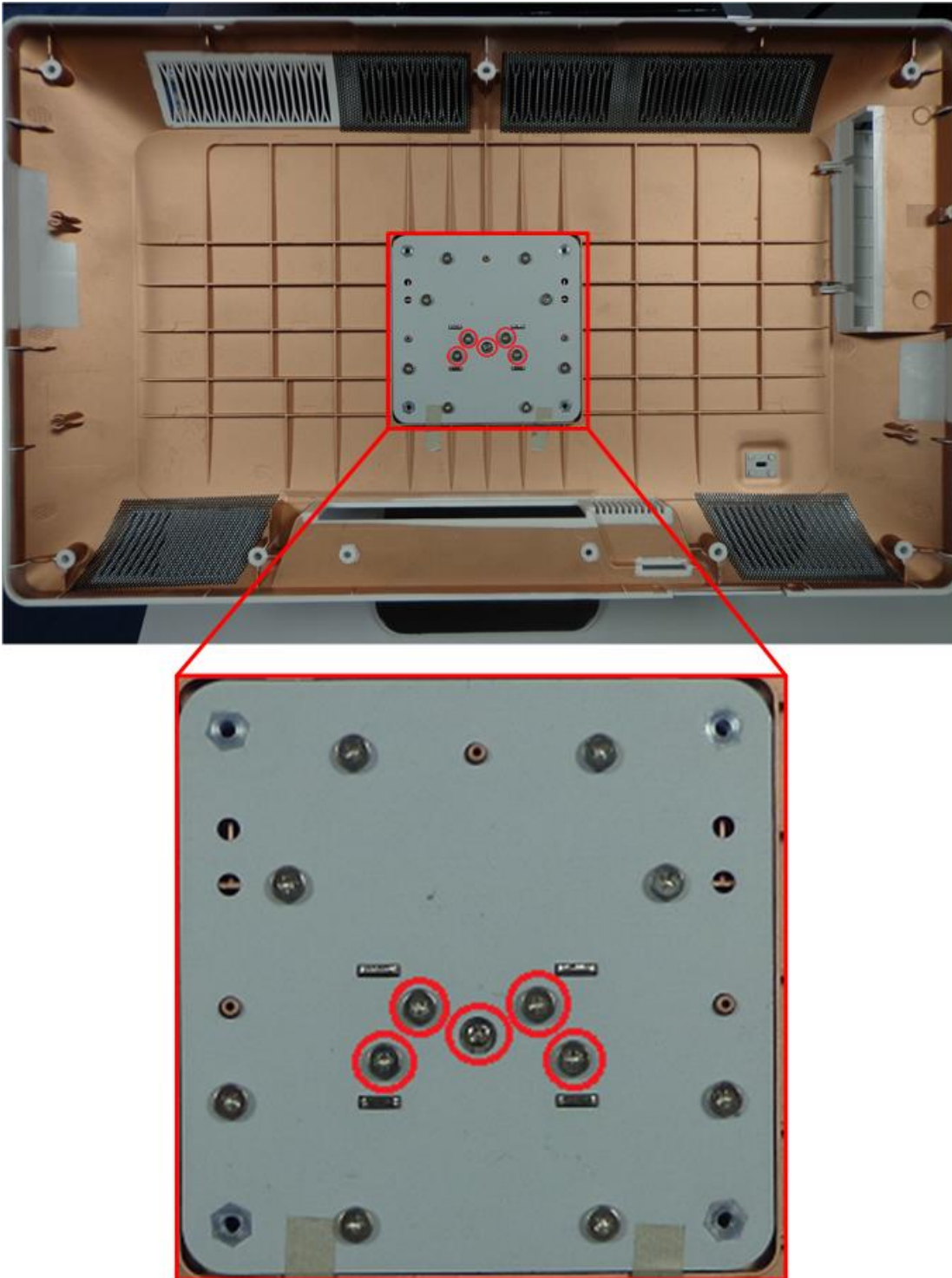


Figure 5 – Integrated chassis stand screws

viglen

Great  
Minds  
Think

viglen

## Step 2 - Detaching the integrated chassis stand

Once the five screws have been removed from the VESA mounting bracket the integrated chassis stand can be detached. To do this, lie the Omnino 5 back panel down in the same way you did during step 1 and grip the top of the stand as demonstrated below:



Figure 6 – Detaching the integrated chassis stand

Whilst gripping here firmly you will be able to lift the integrated stand out and remove it from the Omnino 5 back panel.

**viglen**

Great  
Minds  
Think

**viglen**

### Step 3 - Attaching a third party VESA stand (optional)

Once the integrated chassis stand has been removed an optional third party 100mm x 100mm VESA stand can be attached.

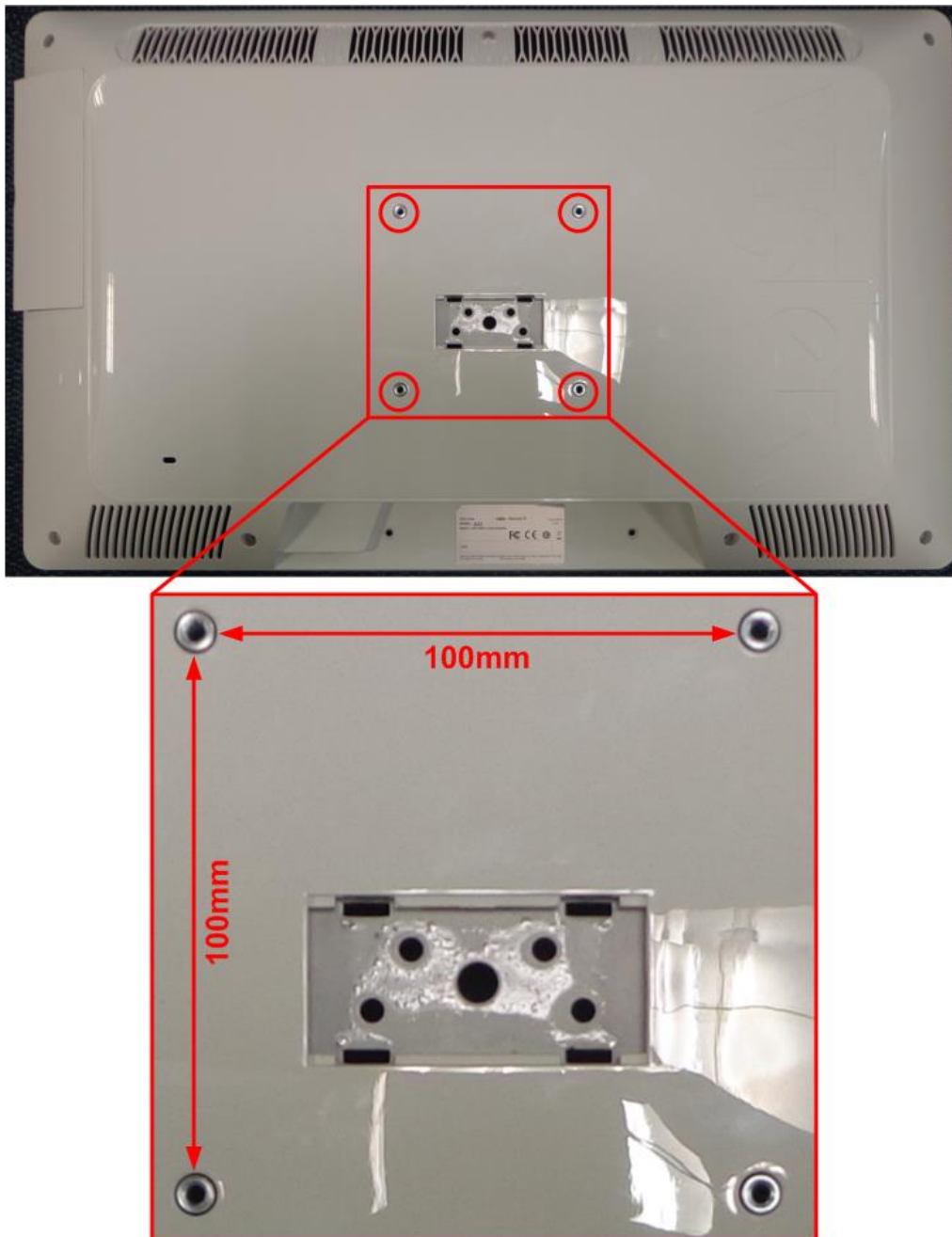


Figure 7 – Attaching a third party VESA stand

Omnino 5 chassis weight range (without stand): 6.4kg – 7.2kg

Please take care when choosing a new stand for your Omnino 5 to ensure that the stand is capable of supporting the weight of the chassis. You should note that the Omnino 5 is significantly heavier than a TFT or LCD monitor, therefore not all monitor stands will be suitable.

Please retain the Omnino 5 stand for future use.

**vis|len**

Great  
Minds  
Think

**vis|len**