

## BIOS Update Instruction for the Vig780s Motherboard **PMPAS780-Vig780s**

- Before initiating a BIOS update, be sure to read and precisely follow the instructions included in this document.
- If a BIOS update process is interrupted or the incorrect BIOS is flashed, your system may not function properly and can possibly damage the motherboard.
- Before updating the BIOS on the Viglen Desktop Board, manually record all BIOS settings that have been changed (from default) so they can be restored after completing the BIOS update

There are up to four methods of updating BIOS to the latest Viglen approved version. The number of options made available for any particular board may vary depending on BIOS Support, drive support and BIOS update file size. You only need to use one.

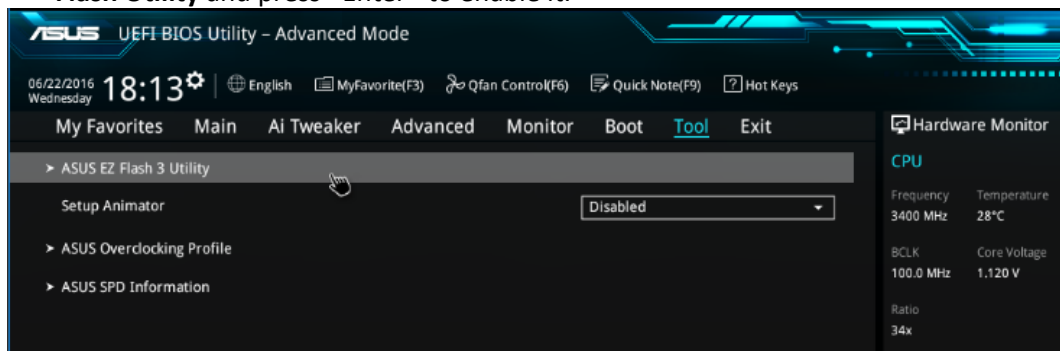
- EZ-Flash 3 Update
- Recovering the BIOS - CrashFree BIOS 3 (recover corrupted BIOS)
- Windows\WinPE BIOS Update

Latest BIOS files and Utility are available from Viglen FTP site:  
<http://download.viglen.co.uk/files/Motherboards/Vig780s>

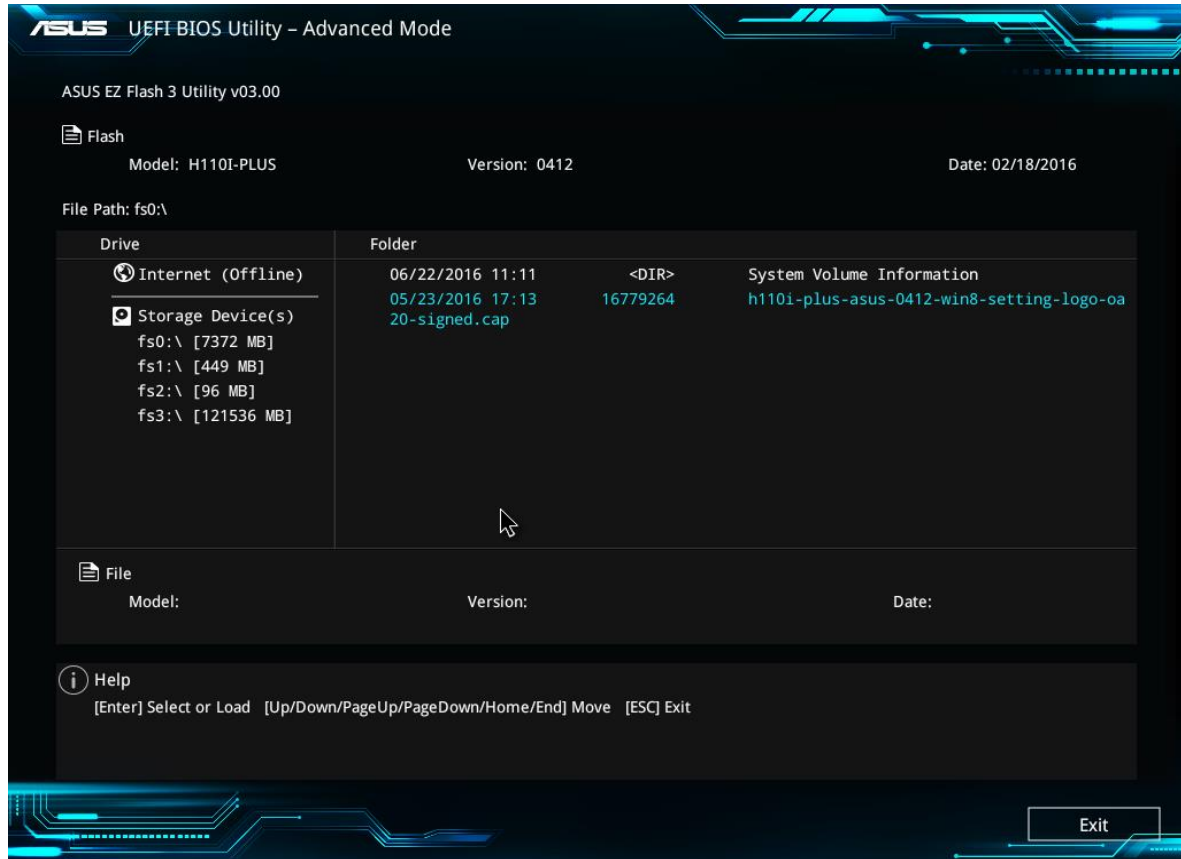
### BIOS Update Instructions using EZ-Flash Method:

For this method you will require a Flash USB device and required BIOS file.

1. Insert the USB flash disk that contains the latest BIOS file to the USB port.
2. Select <Del> or <F2> to Load BIOS Setup.
3. Enter the **Advanced Mode (F7)** of the BIOS setup program. Go to the **Tool** menu to select **ASUS EZ Flash Utility** and press <Enter> to enable it.



4. Press the Up/Down arrow keys to find the USB flash disk that contains the latest BIOS, and then press <Enter>.
5. Select the correct BIOS file, and then press <Enter> to perform the BIOS update process.



6. Reboot the system when the update process is completed.
7. After restarting load BIOS setup menu by pressing <Del> or <F2> key.
8. Load Default BIOS settings by pressing <F5> key.
9. Press F10 to Save and Exit.

**Note:**

- This function supports USB flash disks formatted using FAT32/16 on a single partition only.
- Ensure to load the BIOS default settings to ensure system compatibility and stability. Select the Load Optimized Defaults item under the Exit menu.

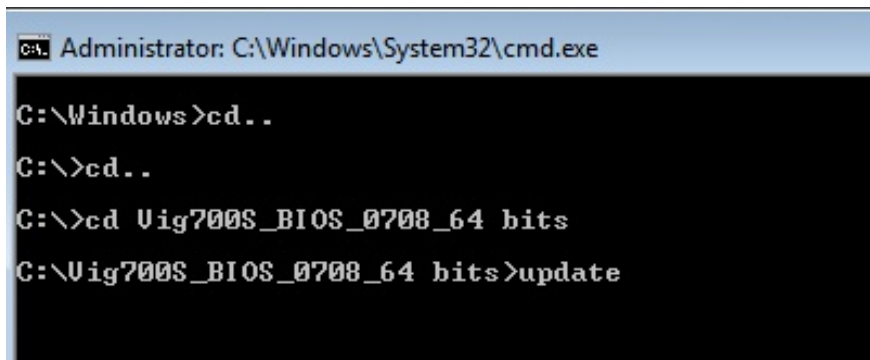
**IMPORTANT!!!!!!**

During the update process DO NOT shut down the PC or interrupt the process, this could cause damage to the motherboard.

## Windows\WinPE BIOS Update

### Windows

1. Save the BIOS update file to a temporary directory.
2. Extract necessary files.
3. Open Command Prompt
  - a. Type 'CMD' under Search.
  - b. Run Command Prompt as Administrator
4. In command prompt navigate to the extracted BIOS folder. (i.e. **Vig700S\_BIOS\_0708\_64 bits**)

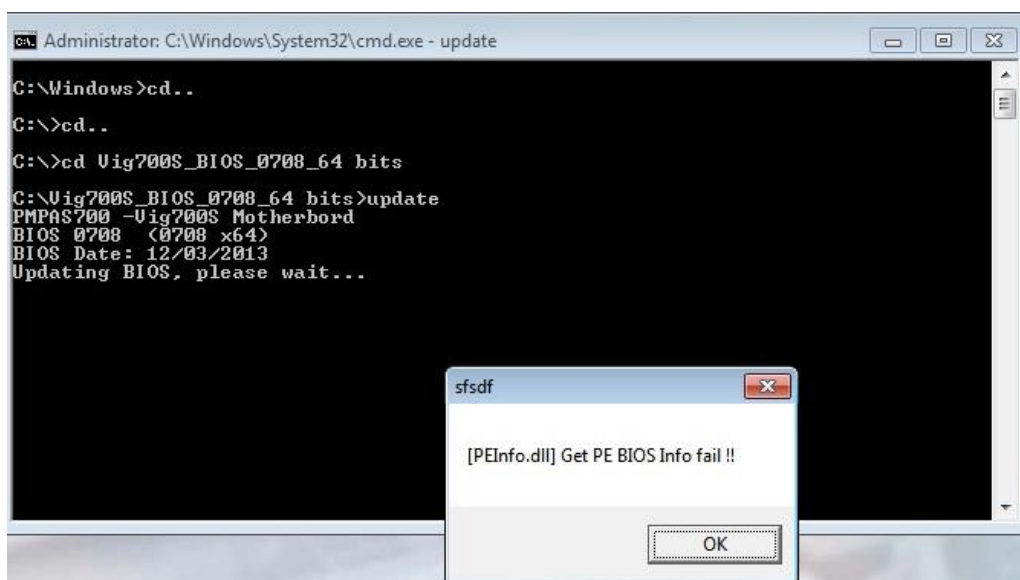


```
C:\Windows\System32\cmd.exe
Administrator: C:\Windows\System32\cmd.exe

C:\Windows>cd..
C:\>cd..
C:\>cd Vig700S_BIOS_0708_64 bits
C:\Vig700S_BIOS_0708_64 bits>update
```

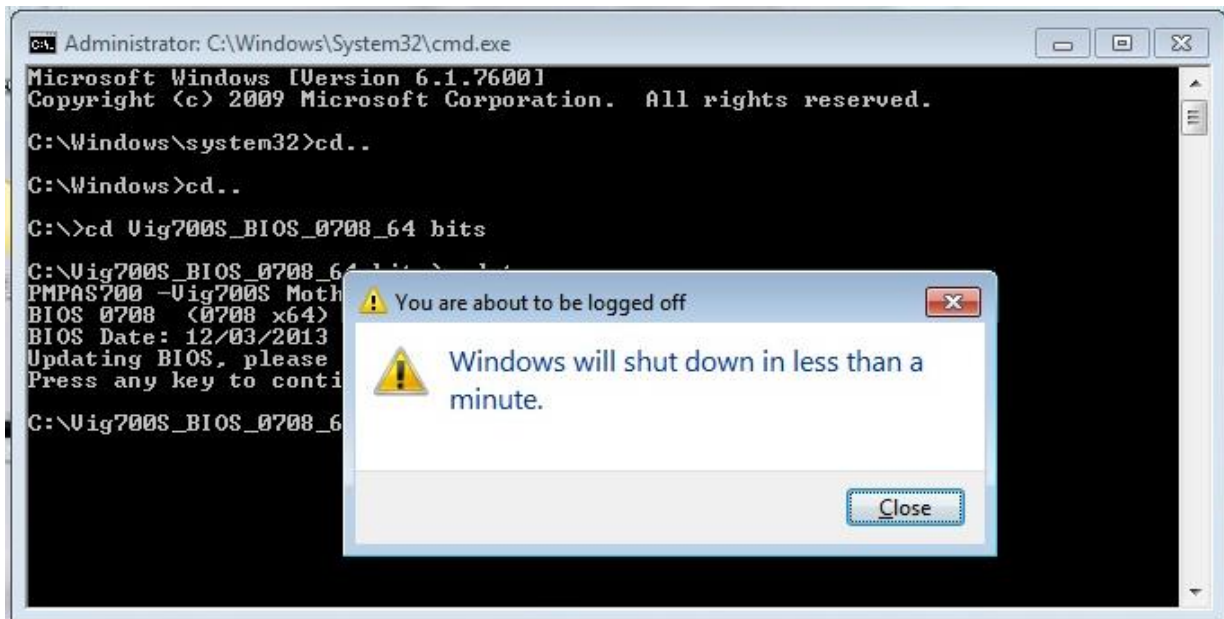
5. At the prompt, type **update** to launch the BIOS updates process.

During BIOS update process if pop message appears select OK to continue.



6. BIOS update process will start.

**CAUTION!!!** DO NOT POWER DOWN YOUR SYSTEM before the update is completed.



7. Once BIOS update is completed, pop up message will appear “Windows will shut down in less than a minute”.

***System will log off and restart after one minute.***

8. During system re-boot, load BIOS setup menu by pressing <Del> or <F2> key.
9. Load Default BIOS settings by pressing <F5> key.
10. Press <F10> to save and exit.

Latest BIOS files and Utility are available from Viglen FTP site:

<http://download.viglen.co.uk/files/Motherboards/Vig780S/>

## BIOS settings for Windows 10

### Windows UEFI mode for Windows 10

Vig830s system configured with Windows 8/8.1 will have following default BIOS

settings **Boot\CSM (Compatibility Support module)**

Launch CSM	<b>[Enabled]</b>
Boot Device Control	<b>[UEFI Only]</b>
Boot from Network Devices	<b>[UEFI drivers first]</b>
Boot from Storage Devices	<b>[UEFI drivers first]</b>
Boot from PCI-E/PCI Expansion Devices	<b>[UEFI drivers first]</b>

### Boot\Secure Boot Menu

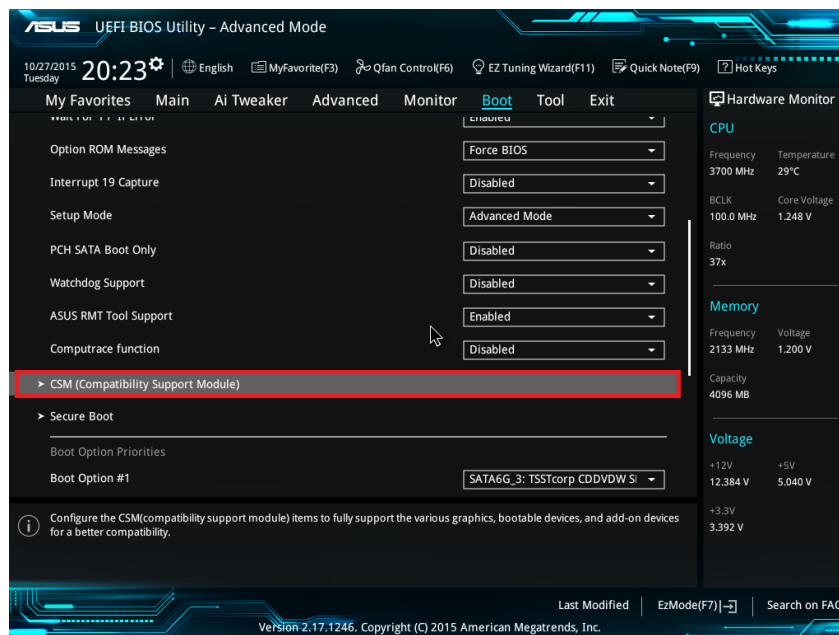
OS Type **[Windows UEFI mode]**

#### Note

Please ensure the changes of the following settings are performed by personnel with some previous experience/knowledge of altering BIOS settings.

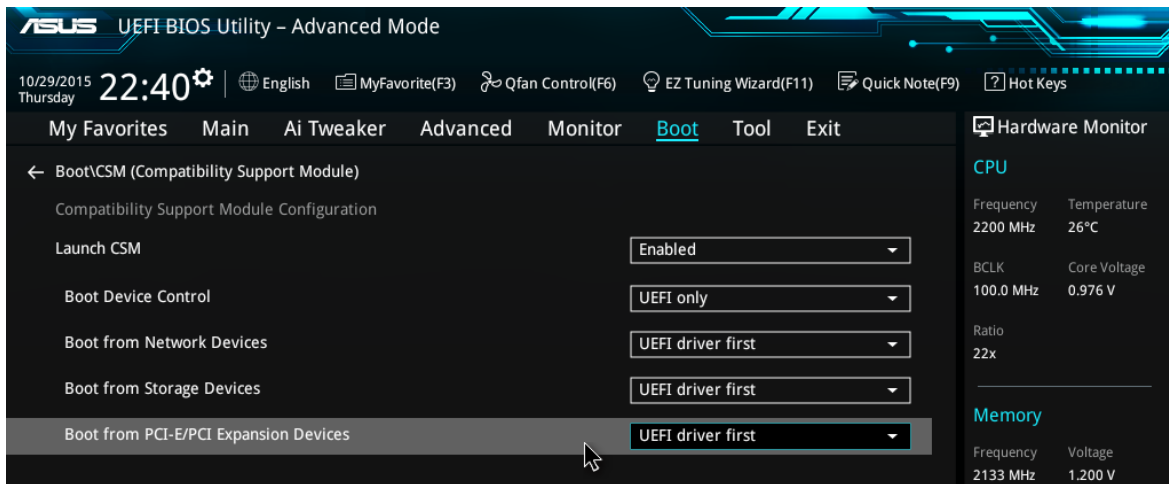
## Enabling Windows UEFI mode for Windows 8/8.1 & 10 Operating System

1. From the BIOS main menu bar select '**Advanced**'
2. Navigate to the **Boot** sub menu
3. Select **CSM (Compatibility Support Module)**



4. In the CSM (**Compatibility Support Module**) change following settings for 10

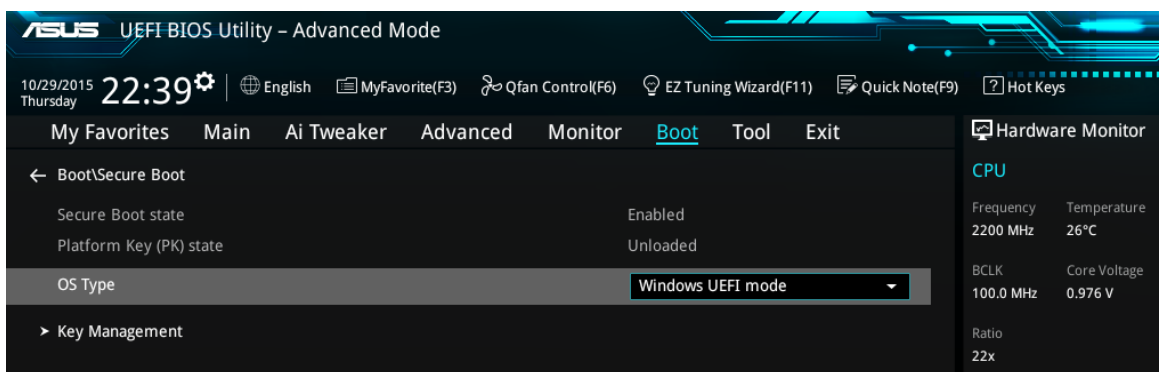
Launch CSM	[Enabled]
Boot Device Control	[UEFI Only]
Boot from Network Devices	[UEFI drivers first]
Boot from Storage Devices	[UEFI drivers first]
Boot from PCI-E/PCI Expansion Devices	[UEFI drivers first]



Compatibility Support Module

*When these settings have been changed, press <Esc> or the Back Button to go back to the Boot Sub Menu to enable **Windows UEFI** for secure boot.*

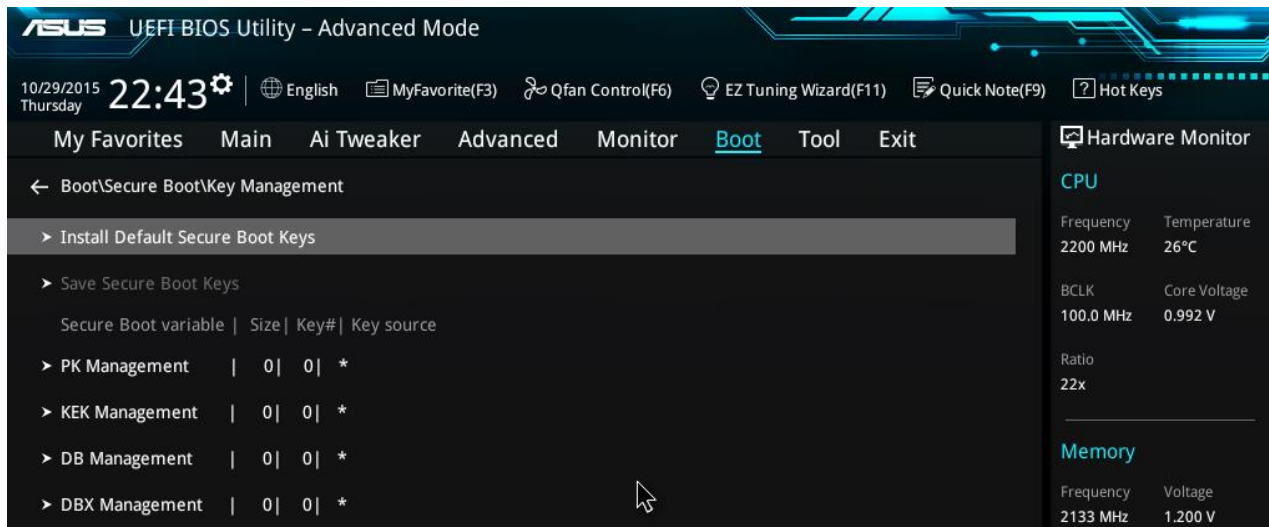
5. Navigate to **Secure Boot** from within the Boot sub menu.
6. Change **OS Type** to **Windows UEFI**.



Secure Boot Menu

7. Select **Key Management**.

8. Select **Install default Secure Boot keys** and select **Yes** to proceed.

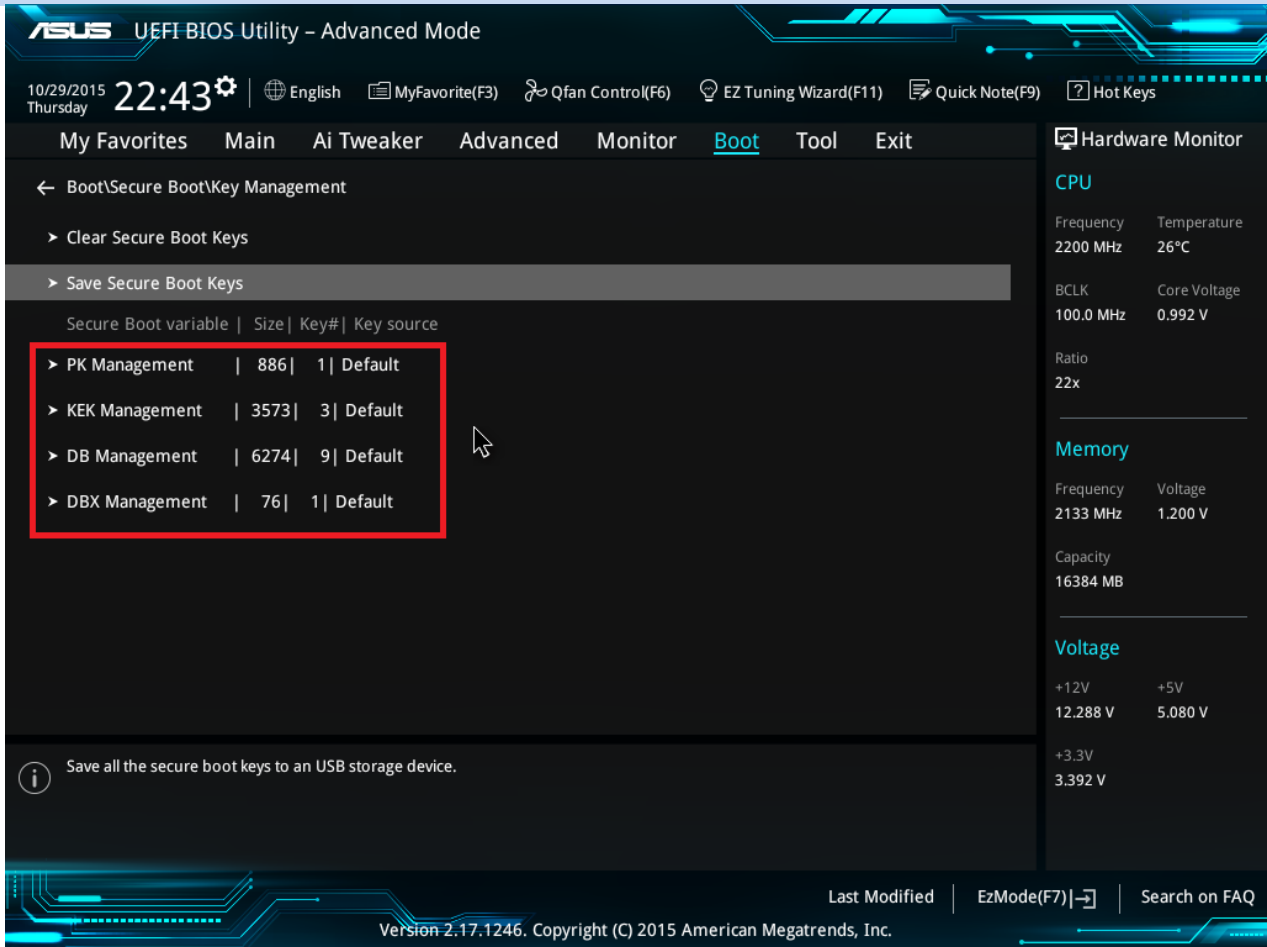


#### Key Management

9. Press **F10** to Save and exit.

*If you need to check changes have been saved go back into BIOS after reboot and navigate into Secure Boot settings. Check that **Secure Boot state** is **enabled** and **Platform Key (PK) state** is **loaded**.*





ASUS UEFI BIOS Utility - Advanced Mode

10/29/2015 Thursday 22:43 | English | MyFavorite(F3) | Qfan Control(F6) | EZ Tuning Wizard(F11) | Quick Note(F9) | Hot Keys

My Favorites Main Ai Tweaker Advanced Monitor Boot Tool Exit

← Boot\Secure Boot\Key Management

- > Clear Secure Boot Keys
- > Save Secure Boot Keys

Secure Boot variable	Size	Key#	Key source
> PK Management	886	1	Default
> KEK Management	3573	3	Default
> DB Management	6274	9	Default
> DBX Management	76	1	Default

Save all the secure boot keys to a USB storage device.

Hardware Monitor

**CPU**

Frequency	Temperature
2200 MHz	26°C
BCLK	Core Voltage
100.0 MHz	0.992 V
Ratio	
22x	

**Memory**

Frequency	Voltage
2133 MHz	1.200 V
Capacity	
16384 MB	

**Voltage**

+12V	+5V
12.288 V	5.080 V
+3.3V	
3.392 V	

Last Modified | EzMode(F7) | Search on FAQ

Version 2.17.1246. Copyright (C) 2015 American Megatrends, Inc.

### Key management – Key loaded

#### Additional information:

For BIOS, Drivers and Documentation enquiries please contact XMA Technical Support Department at [technical-support@xma.co.uk](mailto:technical-support@xma.co.uk).

Remember to include your PC serial number in all correspondence.