

Vig800S – ASUS Q87-E Default BIOS settings

To downgrade to Windows 7 operating system, BIOS settings must be changed to boot into Legacy BIOS mode (non UEFI Mode). BIOS file has been configured with default non UEFI Mode.

BIOS File: **9071v** BIOS version: **9071** BIOS Date: **03/19/2015**

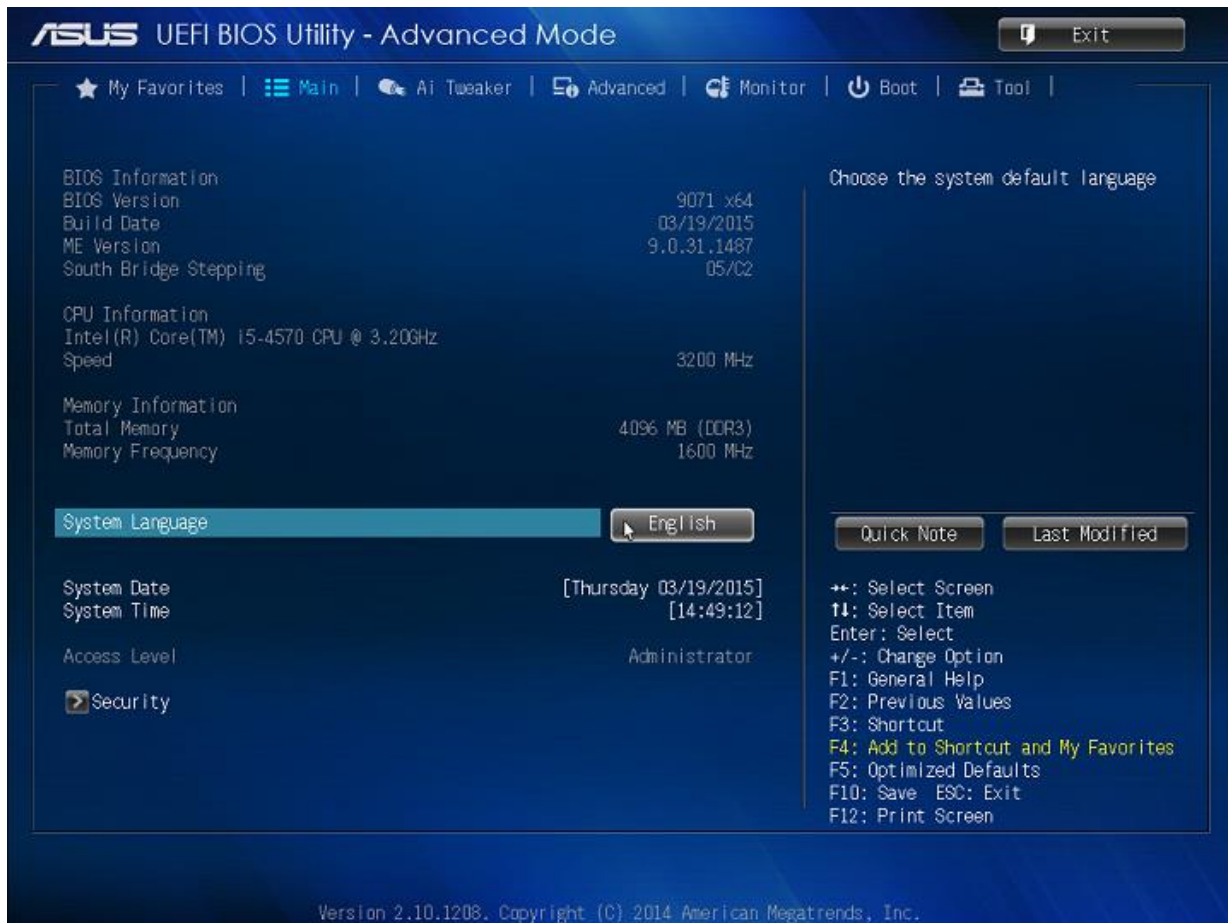
Viglen Default BIOS Settings for **Windows 7 and Legacy operating system**

Setting	Viglen default BIOS settings
Advanced\Trusted Computing	
Security Device Support	Enabled
TPM State	Enabled
Pending Operation	None
Advanced\PCH Configuration\ Intel(R) Smart Connect Technology	
ISCT Support :	Enabled
Advanced\ SATA Configuration	
SATA Mode Selection	AHCI
Aggressive LPM Support	Auto
S.M.A.R.T Status Check	Enabled
Advanced\PCH Configuration\PCI Express Configuration	
DMI Link ASPM Control	Auto
ASPM Support	Disabled
PCIe Speed	Auto
Advanced\System Agent Configuration	
VT-D	Enabled
CPU Audio Device	Enabled
DVI Port Audio	Enabled
Advanced\PCH Configuration\Intel® Rapid Start Technology	
Intel® Rapid Start Technology	Disabled
Advanced\System Agent Configuration\Graphics Configuration	
Primary Display	Auto
IGPU Memory	Auto
Render Standby	Auto
IGPU Multi-Monitor	Enabled
Advanced\AMT configuration	
Intel AMT	Enabled
Advanced\Serial port Console Redirection	
Console Redirection	Enabled
Advanced\onboard Devices Configuration	
HD Audio Controller	Enabled
Front Panel Type	HD
Realtek LAN controller	Enabled
Realtek PCX Option ROM	Enabled
Advanced\APM	
Restore AC Power Loss	Power On
Power on BY PCI-E/PCI	Enabled
Power on BY Ring	Enabled
Power On by RTC	Disabled
Monitor	
CPU Q-FAN Control	Enabled
CPU Fan speed Low Limit	200 RPM
CPU Fan Profile	Standard
Chassis Q-FAN Control	Enabled
Chassis Fan Speed low limit	200 RPM
Chassis Fan Profile	Standard

Vig800S – ASUS Q87-E Default BIOS settings

Chassis Fan 1 Q-Fan Control	Enabled
Chassis Fan 1 Speed Low Limit	200 RPM
Chassis Fan 1 Profile	Standard
Chassis Fan 2 Q-Fan Control	Enabled
Chassis Fan 2 Speed Low Limit	200 RPM
Chassis Fan 2 Profile	Standard
Anti-Surge Support	Enabled
Boot configuration	
Fast Boot	Enabled
SATA Support	All Devices
USB Support	Partial Initialization
PS/2 Keyboard and Mouse Support	Auto
Network Stack Driver Support	Disabled
Next boot After AC Power Loss	Normal Boot
Boot Logo Display	Auto
POST Delay Time	5 sec
Boot Numlock State	On
Wait for 'F1' If Error	Enabled
Option ROM Messages	Force BIOS
Interrupt 19 Capture	Disabled
Boot\CSM (Compatibility Support Module)	
Launch CSM	Enabled
Boot Device Control	UEFI and Legacy
Boot from Network Devices	Legacy OPRAM
Boot from Storage Devices	Legacy OPRAM
Boot from PCI-E/PCI Expansion Devices	Legacy OPRAM
Boot\Secure Boot Menu	
OS Type	Other OS
Boot Menu	
Setup Mode	Advance Mode
Boot Option Priorities	
Boot option 1	CD/DVD ROM Drive
Boot Option 2	Hard disk drive
Boot Option 3	Network Device

Vig800S – ASUS Q87-E Default BIOS settings



The screenshot displays the ASUS UEFI BIOS Utility in Advanced Mode. The interface is dark blue with white text. At the top, the title bar reads "ASUS UEFI BIOS Utility - Advanced Mode" and includes an "Exit" button. Below the title bar is a navigation menu with icons for "My Favorites", "Main", "AI Tweaker", "Advanced", "Monitor", "Boot", and "Tool".

The main content area is divided into several sections:

- BIOS Information:** BIOS Version: 9071 x64, Build Date: 03/19/2015, ME Version: 9.0.31.1487, South Bridge Stepping: 05/C2.
- CPU Information:** Intel(R) Core(TM) i5-4570 CPU @ 3.20GHz, Speed: 3200 MHz.
- Memory Information:** Total Memory: 4096 MB (DDR3), Memory Frequency: 1600 MHz.
- System Language:** A dropdown menu is open, showing "English" as the selected option.
- System Date/Time:** [Thursday 03/19/2015] [14:49:12].
- Access Level:** Administrator.
- Security:** A small icon is visible next to the "Security" label.

On the right side, there is a section titled "Choose the system default language" with two buttons: "Quick Note" and "Last Modified". Below this is a list of keyboard shortcuts:

- ++: Select Screen
- ↑: Select Item
- Enter: Select
- +/-: Change Option
- F1: General Help
- F2: Previous Values
- F3: Shortcut
- F4: Add to Shortcut and My Favorites
- F5: Optimized Defaults
- F10: Save ESC: Exit
- F12: Print Screen

At the bottom of the screen, the version information is displayed: "Version 2.10.1208. Copyright (C) 2014 American Megatrends, Inc."

Vig800S – ASUS Q87-E Default BIOS settings



ASUS UEFI BIOS Utility - Advanced Mode

My Favorites | Main | AI Tweaker | Advanced | Monitor | Boot | Tool

Target CPU Turbo-Mode Speed: 3600MHz
 Target DRAM Speed: 1600MHz
 Target Cache Speed: 3600MHz
 Target DMI/PEG Clock: 100MHz
 Target CPU Graphics Speed: 1150MHz

CPU Core Ratio	Auto
Min. CPU Cache Ratio	Auto
Max. CPU Cache Ratio	Auto
BLK Frequency : DRAM Frequency Ratio	Auto
DRAM Frequency	Auto
Max. CPU Graphics Ratio	Auto
GPU Boost	As Is
EPU Power Saving Mode	Disabled

Quick Note | Last Modified

++: Select Screen
 ##: Select Item
 Enter: Select
 +/-: Change Option
 F1: General Help
 F2: Previous Values
 F3: Shortcut
 F4: Add to Shortcut and My Favorites
 F5: Optimized Defaults
 F10: Save | ESC: Exit
 F12: Print Screen

Version 2.10.1208, Copyright (C) 2014 American Megatrends, Inc.



ASUS UEFI BIOS Utility - Advanced Mode

My Favorites | Main | AI Tweaker | Advanced | Monitor | Boot | Tool

EPU Power Saving Mode: Disabled

DRAM Timing Control: [X]

DIGI+ VRM: [X]

CPU Power Management: [X]

Extreme Over-voltage	Disabled
CPU Core Voltage	1.004V
CPU Cache Voltage	Auto
CPU Graphics Voltage	Auto
CPU System Agent Voltage Offset Mode Sign	+
CPU System Agent Voltage Offset	Auto
CPU Analog I/O Voltage Offset Mode Sign	+
CPU Analog I/O Voltage Offset	Auto
CPU Digital I/O Voltage Offset Mode Sign	+

Quick Note | Last Modified

++: Select Screen
 ##: Select Item
 Enter: Select
 +/-: Change Option
 F1: General Help
 F2: Previous Values
 F3: Shortcut
 F4: Add to Shortcut and My Favorites
 F5: Optimized Defaults
 F10: Save | ESC: Exit
 F12: Print Screen

Version 2.10.1208, Copyright (C) 2014 American Megatrends, Inc.

Vig800S – ASUS Q87-E Default BIOS settings



Vig800S – ASUS Q87-E Default BIOS settings



ASUS UEFI BIOS Utility - Advanced Mode

My Favorites | Main | AI Tweaker | **Advanced** | Monitor | Boot | Tool

Advanced > CPU Configuration >

CPU Configuration

Intel(R) Core(TM) i5-4570 CPU @ 3.20GHz	
CPU Signature	306c3
Processor Family	6
Microcode Patch	19
FSB Speed	100 MHz
Max CPU Speed	3200 MHz
Min CPU Speed	800 MHz
CPU Speed	3200 MHz
Processor Cores	4
Intel HT Technology	Not Supported
Intel VT-x Technology	Supported
Intel SMX Technology	Supported
64-bit	Supported
EIST Technology	Supported
CPU C3 state	Supported
CPU C6 state	Supported
CPU C7 state	Supported

Includes TML, TM2 and EMTM

Quick Note | Last Modified

++: Select Screen
 ##: Select Item
 Enter: Select
 +/-: Change Option
 F1: General Help
 F2: Previous Values
 F3: Shortcut
 F4: Add to Shortcut and My Favorites
 F5: Optimized Defaults
 F10: Save | ESC: Exit
 F12: Print Screen

Intel Adaptive Thermal Monitor **Enabled**

Version 2.10.1208, Copyright (C) 2014 American Megatrends, Inc.



ASUS UEFI BIOS Utility - Advanced Mode

My Favorites | Main | AI Tweaker | **Advanced** | Monitor | Boot | Tool

Advanced > PCI Configuration >

PCI Configuration

PCI Express Configuration

Intel(R) Rapid Start Technology

Intel(R) Smart Connect Technology

DeepSx Power Policies **Disabled**

PCI Express Configuration settings

Quick Note | Last Modified

++: Select Screen
 ##: Select Item
 Enter: Select
 +/-: Change Option
 F1: General Help
 F2: Previous Values
 F3: Shortcut
 F4: Add to Shortcut and My Favorites
 F5: Optimized Defaults
 F10: Save | ESC: Exit
 F12: Print Screen

Version 2.10.1208, Copyright (C) 2014 American Megatrends, Inc.

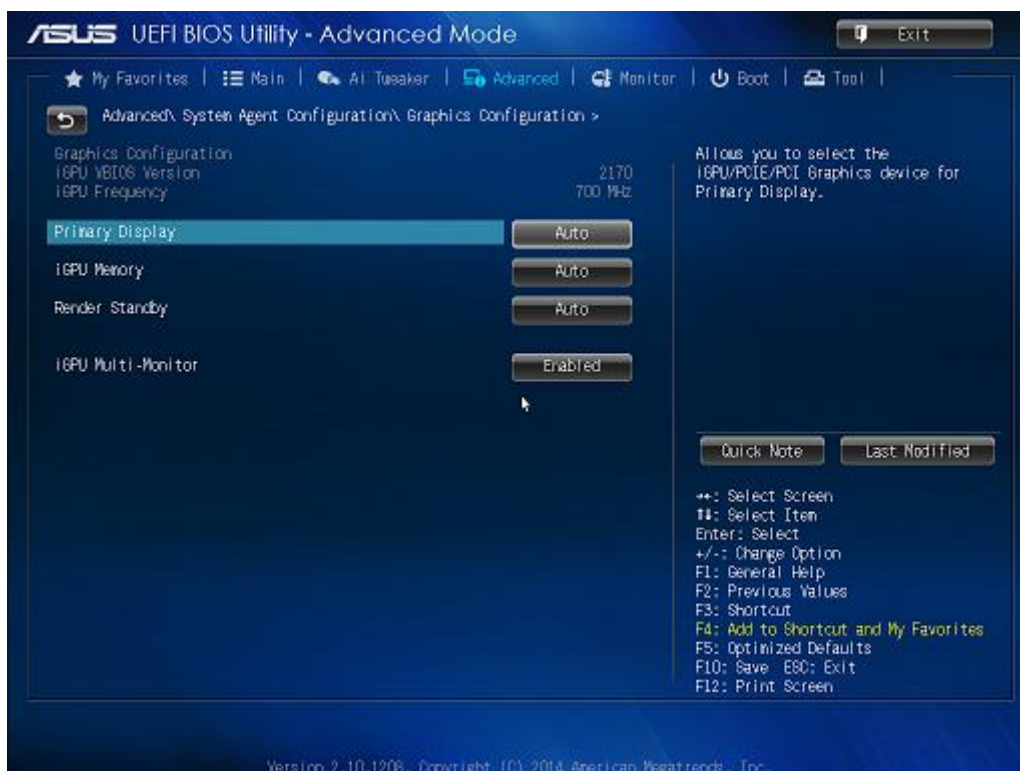
Vig800S – ASUS Q87-E Default BIOS settings



Vig800S – ASUS Q87-E Default BIOS settings



Vig800S – ASUS Q87-E Default BIOS settings



Vig800S – ASUS Q87-E Default BIOS settings



Vig800S – ASUS Q87-E Default BIOS settings



Vig800S – ASUS Q87-E Default BIOS settings



Vig800S – ASUS Q87-E Default BIOS settings



Vig800S – ASUS Q87-E Default BIOS settings



ASUS UEFI BIOS Utility - Advanced Mode

My Favorites | Main | AI Tweaker | Advanced | Monitor | Boot | Tool

12V Voltage: +12.288 V

If enabled, system will have lvp or ovp protect function.

CPU Q-Fan Control: Enabled
 CPU Fan Speed Low Limit: 200 RPM
 CPU Fan Profile: Standard

Chassis Fan 1 Q-Fan Control: Enabled
 Chassis Fan 1 Speed Low Limit: 200 RPM
 Chassis Fan 1 Profile: Standard

Chassis Fan 2 Q-Fan Control: Enabled
 Chassis Fan 2 Speed Low Limit: 200 RPM
 Chassis Fan 2 Profile: Standard

Anti Surge Support: Enabled

Quick Note | Last Modified

++: Select Screen
 ↑↓: Select Item
 Enter: Select
 +/-: Change Option
 F1: General Help
 F2: Previous Values
 F3: Shortcut
 F4: Add to Shortcut and My Favorites
 F5: Optimized Defaults
 F10: Save E8C: Exit
 F12: Print Screen

Version 2.10.1208. Copyright (C) 2014 American Megatrends, Inc.



ASUS UEFI BIOS Utility - Advanced Mode

My Favorites | Main | AI Tweaker | Advanced | Monitor | Boot | Tool

Boot Configuration

Fast Boot: Enabled
 SATA Support: All Devices
 USB Support: Partial In...
 PS/2 Keyboard and Mouse Support: Auto
 Network Stack Driver Support: Disabled
 Next Boot after AC Power Loss: Normal Boot

Boot Logo Display: Auto
 POST Delay Time: 5 sec
 Bootup NumLock State: On
 Wait For "F1" If Error: Enabled
 Option ROM Messages: Force BIOS
 Interrupt 19 Capture: Disabled

Quick Note | Last Modified

Select [Enabled] to accelerate the boot speed. Select [Disabled] to go back to normal boot.

++: Select Screen
 ↑↓: Select Item
 Enter: Select
 +/-: Change Option
 F1: General Help
 F2: Previous Values
 F3: Shortcut
 F4: Add to Shortcut and My Favorites
 F5: Optimized Defaults
 F10: Save E8C: Exit
 F12: Print Screen

Version 2.10.1208. Copyright (C) 2014 American Megatrends, Inc.

Vig800S – ASUS Q87-E Default BIOS settings



Vig800S – ASUS Q87-E Default BIOS settings

