

## Vig800S – ASUS Q87-E Default BIOS settings

BIOS file has been configured with default UEFI Mode for windows 8/8.1.

BIOS File: **9071v** BIOS version: **9071** BIOS Date: **03/19/2015**

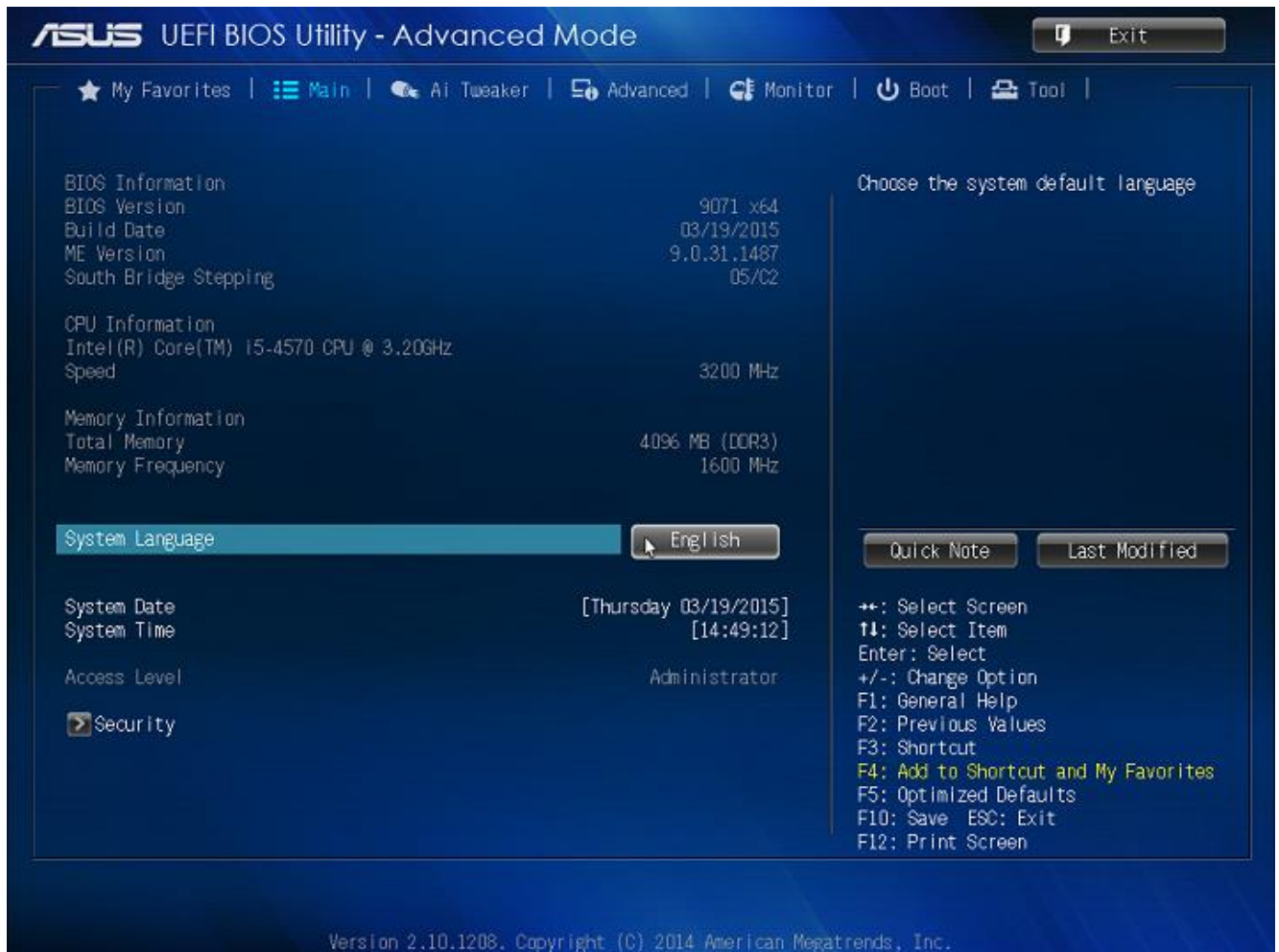
### Viglen Default BIOS Settings for **Windows 8/8.1 operating system – UEFI Enabled**

Setting	Viglen default BIOS settings
Advanced\Trusted Computing	
Security Device Support	Enabled
TPM State	Enabled
Pending Operation	None
Advanced\PCH Configuration\ Intel(R) Smart Connect Technology	
ISCT Support :	Enabled
Advanced\ SATA Configuration	
SATA Mode Selection	AHCI
Aggressive LPM Support	Auto
S.M.A.R.T Status Check	Enabled
Advanced\PCH Configuration\PCI Express Configuration	
DMI Link ASPM Control	Auto
ASPM Support	Disabled
PCIe Speed	Auto
Advanced\System Agent Configuration	
VT-D	Enabled
CPU Audio Device	Enabled
DVI Port Audio	Enabled
Advanced\PCH Configuration\Intel® Rapid Start Technology	
Intel® Rapid Start Technology	Disabled
Advanced\System Agent Configuration\Graphics Configuration	
Primary Display	Auto
IGPU Memory	Auto
Render Standby	Auto
IGPU Multi-Monitor	Enabled
Advanced\AMT configuration	
Intel AMT	Enabled
Advanced\Serial port Console Redirection	
Console Redirection	Enabled
Advanced\onboard Devices Configuration	
HD Audio Controller	Enabled
Front Panel Type	HD
Intel LAN controller	Enabled
Intel PXE Option OPROM	Enabled
Charging USB Devices in Power State S5	Disabled
Advanced\APM	
Restore AC Power Loss	Power On
Power on BY PCI-E/PCI	Enabled
Power on BY Ring	Enabled
Power On by RTC	Disabled
Monitor	
Advanced\Network Stack Configuration	
Network Stack	Enabled
Ipv4 PXE Support	Enabled
Ipv6 PXE Support	Enabled

## Vig800S – ASUS Q87-E Default BIOS settings

<b>Monitor Menu</b>	
CPU Q-FAN Control	Enabled
CPU Fan speed Low Limit	200 RPM
CPU Fan Profile	Standard
Chassis Q-FAN Control	Enabled
Chassis Fan Speed low limit	200 RPM
Chassis Fan Profile	Standard
Chassis Fan 1 Q-Fan Control	Enabled
Chassis Fan 1 Speed Low Limit	200 RPM
Chassis Fan 1 Profile	Standard
Chassis Fan 2 Q-Fan Control	Enabled
Chassis Fan 2 Speed Low Limit	200 RPM
Chassis Fan 2 Profile	Standard
Anti-Surge Support	Enabled
<b>Boot configuration</b>	
Fast Boot	Enabled
SATA Support	All Devices
USB Support	Partial Initialization
PS/2 Keyboard and Mouse Support	Auto
Network Stack Driver Support	Enabled
Next boot After AC Power Loss	Normal Boot
Boot Logo Display	Auto
POST Delay Time	3 sec
Boot Numlock State	On
Wait for 'F1' If Error	Enabled
Option ROM Messages	Force BIOS
Interrupt 19 Capture	Disabled
Setup Mode	Advance Mode
Boot option 1	UEFI:: IPV4
Boot Option 2	UEFI: IPV6
Boot Option 3	HDD
<b>Boot\CSM (Compatibility Support Module)</b>	
Launch CSM	Enabled
Boot Device Control	UEFI Only
Boot from Network Devices	UEFI Driver
Boot from Storage Devices	UEFI Driver
Boot from PCI-E/PCI Expansion Devices	UEFI Driver
<b>Boot\Secure Boot Menu</b>	
OS Type	Windows UEFI

## Vig800S – ASUS Q87-E Default BIOS settings



The screenshot displays the ASUS UEFI BIOS Utility in Advanced Mode. The interface is dark blue with white text. At the top, the title bar reads "ASUS UEFI BIOS Utility - Advanced Mode" and includes an "Exit" button. Below the title bar is a navigation menu with options: "My Favorites", "Main", "Ai Tweaker", "Advanced", "Monitor", "Boot", and "Tool".

The main content area is divided into several sections:

- BIOS Information:** BIOS Version: 9071 x64, Build Date: 03/19/2015, ME Version: 9.0.31.1487, South Bridge Stepping: 05/C2.
- CPU Information:** Intel(R) Core(TM) i5-4570 CPU @ 3.20GHz, Speed: 3200 MHz.
- Memory Information:** Total Memory: 4096 MB (DDR3), Memory Frequency: 1600 MHz.
- System Language:** A dropdown menu is open, showing "English" as the selected option.
- System Date and Time:** [Thursday 03/19/2015] [14:49:12].
- Access Level:** Administrator.
- Security:** A small icon is visible next to the "Security" label.

On the right side of the screen, there is a section titled "Choose the system default language" with two buttons: "Quick Note" and "Last Modified". Below this, a list of keyboard shortcuts is provided:

- ←→: Select Screen
- ↑↓: Select Item
- Enter: Select
- +/-: Change Option
- F1: General Help
- F2: Previous Values
- F3: Shortcut
- F4: Add to Shortcut and My Favorites
- F5: Optimized Defaults
- F10: Save ESC: Exit
- F12: Print Screen

At the bottom of the screen, the version information is displayed: "Version 2.10.1208. Copyright (C) 2014 American Megatrends, Inc."

## Vig800S – ASUS Q87-E Default BIOS settings



**ASUS UEFI BIOS Utility - Advanced Mode**

My Favorites | Main | AI Tweaker | Advanced | Monitor | Boot | Tool

Target CPU Turbo-Mode Speed: 3600MHz  
 Target DRAM Speed: 1600MHz  
 Target Cache Speed: 3600MHz  
 Target DMI/PEG Clock: 100MHz  
 Target CPU Graphics Speed: 1150MHz

CPU Core Ratio	Auto
Min. CPU Cache Ratio	Auto
Max. CPU Cache Ratio	Auto
BLK Frequency : DRAM Frequency Ratio	Auto
DRAM Frequency	Auto
Max. CPU Graphics Ratio	Auto
GPU Boost	As Is
EPU Power Saving Mode	Disabled

Quick Note | Last Modified

++: Select Screen  
 ##: Select Item  
 Enter: Select  
 +/-: Change Option  
 F1: General Help  
 F2: Previous Values  
 F3: Shortcut  
 F4: Add to Shortcut and My Favorites  
 F5: Optimized Defaults  
 F10: Save | ESC: Exit  
 F12: Print Screen

Version 2.10.1208, Copyright (C) 2014 American Megatrends, Inc.



**ASUS UEFI BIOS Utility - Advanced Mode**

My Favorites | Main | AI Tweaker | Advanced | Monitor | Boot | Tool

EPU Power Saving Mode: Disabled

DRAM Timing Control: [X]

DIGI+ VRM: [X]

CPU Power Management: [X]

Extreme Over-voltage	Disabled
CPU Core Voltage	1.004V
CPU Cache Voltage	Auto
CPU Graphics Voltage	Auto
CPU System Agent Voltage Offset Mode Sign	+
CPU System Agent Voltage Offset	Auto
CPU Analog I/O Voltage Offset Mode Sign	+
CPU Analog I/O Voltage Offset	Auto
CPU Digital I/O Voltage Offset Mode Sign	+

Quick Note | Last Modified

++: Select Screen  
 ##: Select Item  
 Enter: Select  
 +/-: Change Option  
 F1: General Help  
 F2: Previous Values  
 F3: Shortcut  
 F4: Add to Shortcut and My Favorites  
 F5: Optimized Defaults  
 F10: Save | ESC: Exit  
 F12: Print Screen

Version 2.10.1208, Copyright (C) 2014 American Megatrends, Inc.

## Vig800S – ASUS Q87-E Default BIOS settings



## Vig800S – ASUS Q87-E Default BIOS settings



ASUS UEFI BIOS Utility - Advanced Mode

My Favorites | Main | AI Tweaker | **Advanced** | Monitor | Boot | Tool

Advanced > CPU Configuration >

CPU Configuration

Intel(R) Core(TM) i5-4570 CPU @ 3.20GHz	
CPU Signature	306c3
Processor Family	6
Microcode Patch	19
FSB Speed	100 MHz
Max CPU Speed	3200 MHz
Min CPU Speed	800 MHz
CPU Speed	3200 MHz
Processor Cores	4
Intel HT Technology	Not Supported
Intel VT-x Technology	Supported
Intel SMX Technology	Supported
64-bit	Supported
EIST Technology	Supported
CPU C3 state	Supported
CPU C6 state	Supported
CPU C7 state	Supported
L1 Data Cache	32 KB x 4
L1 Code Cache	32 KB x 4
L2 Cache	256 KB x 4
L3 Cache	6144 KB

Includes TML, TM2 and EMITM

Quick Note | Last Modified

++: Select Screen  
 ##: Select Item  
 Enter: Select  
 +/-: Change Option  
 F1: General Help  
 F2: Previous Values  
 F3: Shortcut  
 F4: Add to Shortcut and My Favorites  
 F5: Optimized Defaults  
 F10: Save | ESC: Exit  
 F12: Print Screen

Intel Adaptive Thermal Monitor: Enabled

Version 2.10.1208. Copyright (C) 2014 American Megatrends, Inc.



ASUS UEFI BIOS Utility - Advanced Mode

My Favorites | Main | AI Tweaker | **Advanced** | Monitor | Boot | Tool

Advanced > PCI Configuration >

PCI Configuration

PCI Express Configuration

Intel(R) Rapid Start Technology

Intel(R) Smart Connect Technology

DeepSx Power Policies: Disabled

PCI Express Configuration settings

Quick Note | Last Modified

++: Select Screen  
 ##: Select Item  
 Enter: Select  
 +/-: Change Option  
 F1: General Help  
 F2: Previous Values  
 F3: Shortcut  
 F4: Add to Shortcut and My Favorites  
 F5: Optimized Defaults  
 F10: Save | ESC: Exit  
 F12: Print Screen

Version 2.10.1208. Copyright (C) 2014 American Megatrends, Inc.

## Vig800S – ASUS Q87-E Default BIOS settings

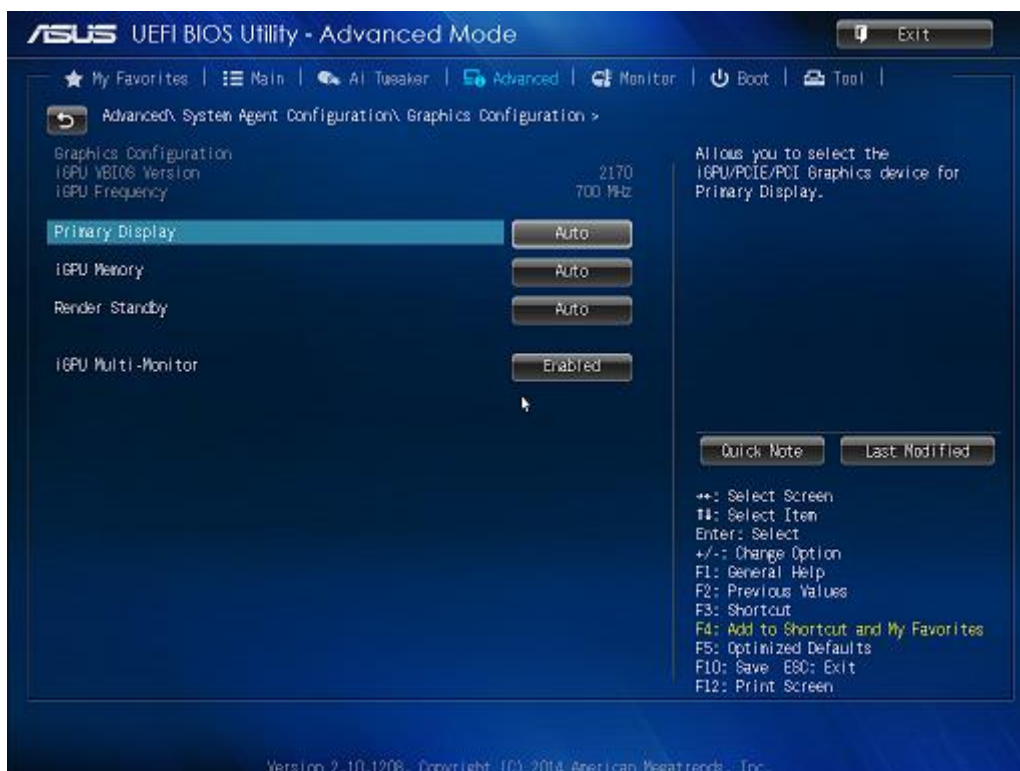


## Vig800S – ASUS Q87-E Default BIOS settings





## Vig800S – ASUS Q87-E Default BIOS settings



## Vig800S – ASUS Q87-E Default BIOS settings



## Vig800S – ASUS Q87-E Default BIOS settings



## Vig800S – ASUS Q87-E Default BIOS settings



## Vig800S – ASUS Q87-E Default BIOS settings



## Vig800S – ASUS Q87-E Default BIOS settings



**ASUS UEFI BIOS Utility - Advanced Mode**

My Favorites | Main | AI Tweaker | Advanced | Monitor | Boot | Tool

12V Voltage: +12.288 V

If enabled, system will have lvp or ovp protect function.

CPU Q-Fan Control	Enabled
CPU Fan Speed Low Limit	200 RPM
CPU Fan Profile	Standard
Chassis Fan 1 Q-Fan Control	Enabled
Chassis Fan 1 Speed Low Limit	200 RPM
Chassis Fan 1 Profile	Standard
Chassis Fan 2 Q-Fan Control	Enabled
Chassis Fan 2 Speed Low Limit	200 RPM
Chassis Fan 2 Profile	Standard
Anti Surge Support	Enabled

Quick Note | Last Modified

++: Select Screen  
 ##: Select Item  
 Enter: Select  
 +/-: Change Option  
 F1: General Help  
 F2: Previous Values  
 F3: Shortcut  
 F4: Add to Shortcut and My Favorites  
 F5: Optimized Defaults  
 F10: Save E8C: Exit  
 F12: Print Screen

Version 2.10.1208. Copyright (C) 2014 American Megatrends, Inc.



**ASUS UEFI BIOS Utility - Advanced Mode**

My Favorites | Main | AI Tweaker | Advanced | Monitor | Boot | Tool

Boot Configuration

Select [Enabled] to accelerate the boot speed. Select [Disabled] to go back to normal boot.

Fast Boot	Enabled
SATA Support	All Devices
USB Support	Partial In...
PS/2 Keyboard and Mouse Support	Auto
Network Stack Driver Support	Enabled
Next Boot after AC Power Loss	Normal Boot
Boot Logo Display	Auto
POST Delay Time	3 sec
Bootup NumLock State	On
Wait For "F1" If Error	Enabled
Option ROM Messages	Force BIOS
Interrupt 19 Capture	Disabled

Quick Note | Last Modified

++: Select Screen  
 ##: Select Item  
 Enter: Select  
 +/-: Change Option  
 F1: General Help  
 F2: Previous Values  
 F3: Shortcut  
 F4: Add to Shortcut and My Favorites  
 F5: Optimized Defaults  
 F10: Save E8C: Exit  
 F12: Print Screen

Version 2.10.1208. Copyright (C) 2014 American Megatrends, Inc.

## Vig800S – ASUS Q87-E Default BIOS settings



## Vig800S – ASUS Q87-E Default BIOS settings





## Vig800S – ASUS Q87-E Default BIOS settings



**ASUS UEFI BIOS Utility - Advanced Mode** [Exit]

Intel(R) Ethernet

PORT CONFIGURATION MENU  
NIC Configuration

Blink LEDs (range 0-15 seconds) 0

PORT CONFIGURATION INFORMATION  
UEFI Driver: Intel(R) PRO/1000 5.4.19 PCI-E  
Adapter PBA: FFFFFFF-0FF  
Chip Type: Intel PCH LPT  
PCI Device ID: 153A  
PCI Bus:Device:Function: 00:19:00  
Link Status: **Disconnected**  
Factory MAC Address: 78:24:AF:35:BE:F7

Click to configure the network device port.

Quick Note Last Modified

←: Select Screen  
↑: Select Item  
Enter: Select  
+/-: Change Option  
F1: General Help  
F2: Previous Values  
F3: Shortcut  
F4: Add to Shortcut and My Favorites  
F5: Optimized Defaults  
F10: Save ESC: Exit  
F12: Print Screen

Version 2.10.1208. Copyright (C) 2014 American Megatrends, Inc.